

J1.3 WUDAPT: FACILITATING ADVANCED URBAN CANOPY MODELING FOR WEATHER, CLIMATE AND AIR QUALITY APPLICATIONS

Jason Ching *

*Institute for the Environment, The University of North Carolina, Chapel Hill, NC, USA

Gerald Mills¹, Linda See⁴, Paul Alexander¹, Benjamin Bechtel⁷, Johannes Feddema², Keith L. Oleson³,
Iain Stewart⁵, Marina Neophytou⁶, Fei Chen³, Xuemei Wang⁸, Adel Hanna *

*University of North Carolina, ¹University College of Dublin, ²University of Kansas, ³NCAR,
⁴IIASA, ⁵University of Toronto, ⁶University of Cyprus, ⁷University of Hamburg, ⁸Sun Yet Sen University

1. INTRODUCTION

Climate changes, limited resources and increasing population are major issues impacting society and our environment. Current models available for weather, climate and air quality applications are powerful state-of-science modeling systems and can be employed as assessment tools to address the impact of these issues. This paper includes highlights from and summarizes major points of a recently published paper (Ching 2013) which reviews examples of community-based publically available modeling systems, and given that urban areas are now home to more than half the worlds population, focusing on their utilization for urban focused applications. As assessment tools, such models will require special attention to the complexities and high degree of spatial inhomogeneities of the underlying surface areas. Such applications optimally require relatively fine grid meshes and scale appropriate science description for the varied and complex land surface atmospheric processes commensurate to the fine scale land surface variability structure. We focus on innovative opportunities specific to the optimal operations of these urban systems, with attention on fine mesh size and data needs and an initial collaborative prototype as an effort to develop a worldwide urban database for global coverage of city specific gridded morphology are identified and discussed.

2. COMMUNITY-BASED STATE-OF-SCIENCE MODELS FOR WEATHER: U-WRF, CLIMATE: CESM-CLMU AND AIR QUALITY: CMAQ AND WRF-CHEM.

Here, we focus on mature, major worldwide community-based modeling systems for climate and weather e.g., the Community Earth System Models (CESM) Community Land Model Urban (CLMU) and the Weather Research and Forecasting (WRF) system, (WRF: www.WRF.com). There are also similarly configured community systems for air quality, e.g., the Community Multiscale Air Quality (CMAQ) (cmaq-model.org) and WRF-Chem (acd.ucar.edu/WRF-Chem). These are powerful state-of-science based systems, they provide a modeling framework for meeting the challenges of population growth, climate changes, air quality, urban sustainability, livability, and human comfort confronting decision makers and society. These systems are generally similarly designed; they each have a set of requisite preprocessors with interface links to the core system and post-processing systems. State-of-science in both preprocessors and core is maintained in timely updates called "Versions"; these updates come from contributions from their respective communities. Major attributes of each system includes a dynamic development framework for introducing science upgrades, options for multi-scale applications (with domain nests), and that they are open source. These systems, and their versions, are available as downloads; user-friendly setup and controls allow choices of available science options, and updates to documentation provide transparency to the underlying science. Each system provides community support infrastructure through annual workshops and tutorial services at NCAR and for CMAQ and affiliated models, by the CMAS Center in Chapel Hill, NC, www.cmascenter.org. The feedback between meteorology and chemistry core processing and the means to assimilate data are on-going challenges that are currently being addressed.

* *Corresponding author:* Jason Ching, Institute for the Environment, UNC-Chapel Hill, 659 Bank of America Plaza, CB#6116, Chapel Hill, NC 27599-6116; e-mail: jksching@gmail.com

Customized applications throughout the world are nuanced, and each of these model tools will in large part be dependent on the input data. Each system has provisions for requisite data inputs including initial and boundary conditions and emissions (air quality systems), and static information such as land use classes, terrain, vegetation, be it through available standard table lookups derived from a variety of data sources including remotely sensed data from satellites as well as from customized inputs. The set up and application of each system requires that their specific requirements need to be understood and fulfilled; e.g., (a) model outcomes are scale dependent; the response time scale differs for different applications. (b) Specifics regarding data forms, as well as their availability and spatial/temporal coverage will affect model outcomes and (c) We cannot depend on remote sensing (e.g., satellite) data alone, as their outputs may not be representing what is needed. With care, both systems can be set up for appropriately addressing specific issues, thus, meeting the requirements of being fit for purpose.

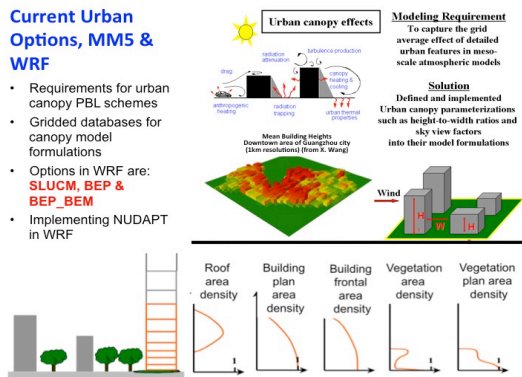


Figure 1: Urban canopy modeling

There are at least three major considerations when applying these modeling tools for urban modeling applications. First, the spatial complexity of the underlying surfaces must be addressed, and a similar regard for emission details for air quality modeling. Second, the grid resolution must be commensurate with the desired outcome (e.g., “fit for purpose”); spatial gradients of both the inputs and thus the output fields tend to be highly complex in urban areas. So, for any grid resolution, the unresolved subgrid information content can be quite large. Third, and for the remainder of this discussion, we focus on the specialized data requirements for urban modeling. Commensurate with current urban models, models are cast in terms of the underlying urban

morphology in each grid. Given the existence of urban building-street canyons and the interspersed vegetation, the fundamental equations for flow, thermodynamics and radiation are required, and moisture has now been recast with treatment for the influences of these morphological features using urban canopy parameters or UCPs (Martilli et al., 2002, DuPont et al., 2004; Otte et al., 2004). A schematic of this framework is shown in Fig. 1. A relatively large effort to provide gridded UCPs has been undertaken in the Prototype NUDAPT project (Ching et al., 2009). On September 11, 2001, the terrorist attack in NYC and Washington DC prompted the need for the USA to be proactive in developing advanced modeling tools for urban applications. A survey conducted by the Board of the Urban Environment (BUE) of the American Meteorological Society (AMS) resulted in an Initiative to the Office of the Federal Coordinator for Meteorology (OFCM) for a supporting database to the MM5, now WRF. The US Environmental Protection Agency (USEPA) responded, and in a collaboration of representatives from private, academic and public agency(s), formed a Consortium to develop an initial prototype of an urban modeling database. This Consortium embraced the concept of a community-based system and called their implementation the National Urban Database and Access Portal Tools (NUDAPT). Elements of this Prototype included a detailed effort by the USEPA for the collection and processing of a special urban canopy dataset of urban canopy parameters for Houston TX. Other agencies contributed and the National Building Statistics Database (NBSD) (Burian et al., 2007) emerged with leadership and guidance of Mike Brown of Los Alamos National Laboratory.

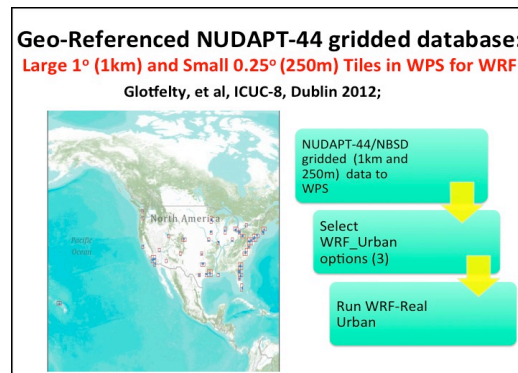


Fig 2. NUDAPT-44 gridded database incorporated in the WRF system.

Look-up table based on land use classification schemes provide default values; gridded inputs reflecting actual values at each grid in the modeling domain are preferable, and studies show that their use provides significantly superior model results. We ponder a strategy and tactical approaches to meet this challenge; and outline a conceptual framework and an implementation strategy by which to achieve this goal. At the outset, we seek model domain-wide gridded urban canopy parameters (UCPs) and Morphological Materials data (MMDs) of building and morphological structures. In this section, we explore the generic requirements for meeting the urban data requirements for both WRF-U and CLMU. Our objective is to make real the capabilities of WRF-U and CLMU as modeling tools capable of providing robust assessments for urban planners dealing with major issues including climate change, population growth for their specific urban area of concern, and for any and all urban areas in the world. We suggest the term WUDAPT for World-Wide Urban Database and Access Portal tools, which has similarity but a wider scope and somewhat different development strategies to NUDAPT. By design it will also retain the unique characteristic of each and every urban area, achieved in a cost effective and timely manner, and meets universally acceptably fit-for-purpose state-of-science kilometer scale models. The approach we propose introduces and incorporates recent technical innovations and solicits community involvement.

leadership and guidance of urban “experts” as they incorporate elements of Local Climate Zones (LCZ) described in Stewart and Oke, (2012) and shown in Fig 5, remotely sensed information (such as that found in Landsat and Google Earth), and the use of Geo-Wiki technology (Fritz et al., 2012). Conceptually, a tactical strategy would be to map LCZ parameters onto model grids, rectifying the broad ranges of canopy parameters in LCZ with remotely sensed databases such as those available in Google Earth and Landsat, presume or develop relationships linking the gridded LCZ to a set of UCPs and adapt for use by local observers using specialized mobile geo-referenced (GPS) APPs, the urban Geo-Wiki system (Fig 6 & 7).

Looking into and exploring the potential for USING LOCAL CLIMATE ZONE (LCZ) Stewart and Oke 2012 FOR MODELING

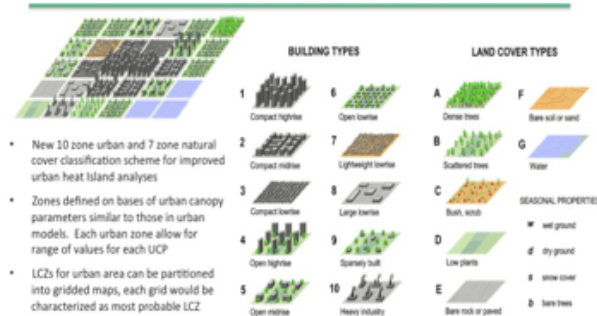


Fig 5. Local Climate Zones (LCZ) Stewart and Oke, 2012

The core of the effort involves invoking and conducting a Census of City survey. This involves adaptation of a framework based upon

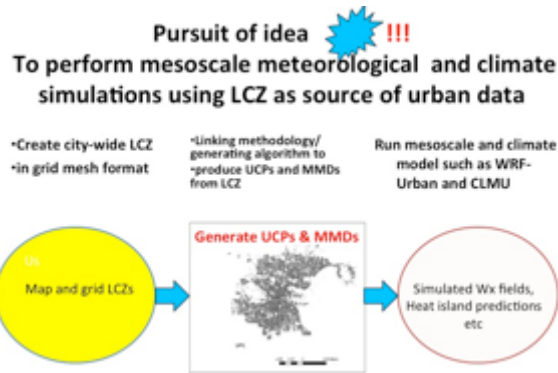


Fig. 6. Conceptual Prototype using LCZ to obtain UCP for WRF

Interactive process of LCZ-mapping

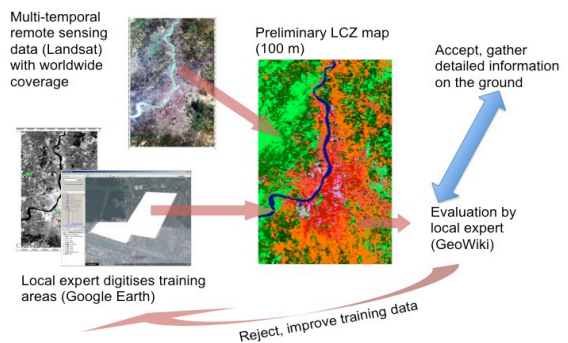


Fig 7: Procedure to develop the LCZ mapping for an urban area

The latter step provides an on-site, “boots-on-the-ground” strategy to obtain quantitative details and or verification of the critical urban canopy parameters and a photo-based means to obtain representative scenes of urban morphological features distributions that serve as

surrogate for generating and deriving the morphological material data (MMD). The advantages are that:

- LCZ are semi-automated iterative procedure and that it relies on local experts, availability of cloud-free multi-temporal spectral and if possible height data; the methodology to be adopted will need to be relatively quick, expedient and inexpensive to generate; we foresee huge cost benefits and potential worldwide coverage achievable in a short time frame.
- Makes possible use of advanced meso-urban modeling tools in areas with little data and resources to generate such data.
- Data generated for each city can yield significant model improvement over current lookup table schemes.

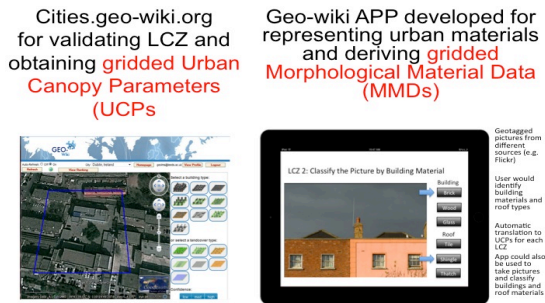


Fig 8: Using the Urban Geo-Wiki to (a) validate the LCZ and (b) to generate the photo-base for deriving the Morphological Material Data (MMD)

principal, by engaging a network of international urban partners in collaboration, it is conceivable to expand this database to cities in all parts of the world, the coverage only dependent on the level and extent of community involvement. Thus we seek communities such as the IAUC, and the AMS and others to play a critical role (Fig.9).

We recognize that each major urban area will have unique spatial characteristics i.e., no two cities are identical in their UCP and MMD spatial distribution and scale. It is possible to retain this characteristic in models, with the introduction of another innovative new technology called Multiple Resolution Analyses or MRA (Mouzourides, et al., 2012) which provide the ability to retain and quantify the unique character of each and every city, and as a function of grid size. Cities are unique; it is an interesting exercise to attempt to define the character and attributes of any given urban area. For many, cities have historical and cultural merits; for others it might be the seat of geopolitical power, or an important center of commerce. These characterizations are qualitative. We are now aware of a promising new capability with the ability to quantify “uniqueness”. Based on wavelet theory, and using various combinations of morphological parameters, the multi-resolution analysis technique (Mouzourides et al., 2012, 2013) provide grid scale characterizations called “Approximations” of properties of urban morphological fields and important subgrid descriptions called “Details” at each grid scale (Fig 10).

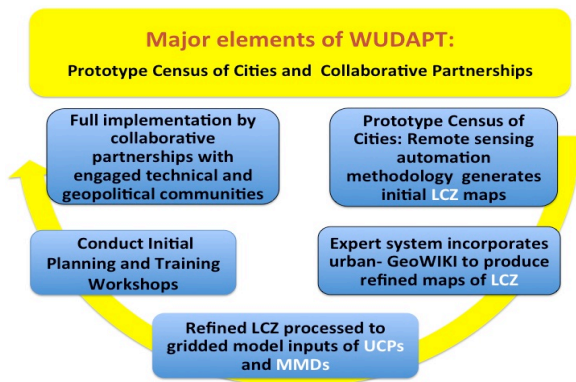


Fig 9. Conceptual strategy for WUDAPT

The resulting grid-by-grid data will include the desired suite of parameter information including building heights, street widths, urban content and areal extent (fraction) of urbanization. Information is relayed and downloaded to a database system and with standardization and final quality assurance; a database is created for a city. In

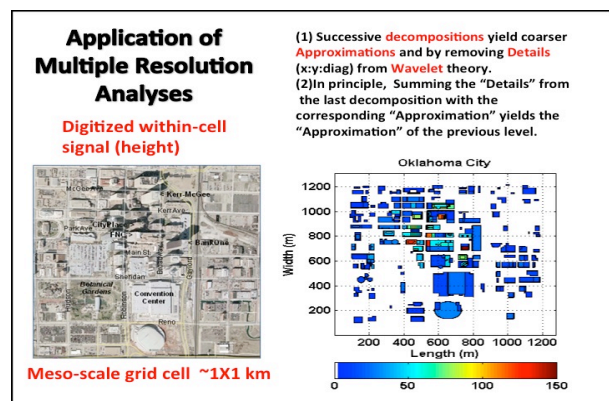


Fig 10. MRA Methodology

Further, the subgrid information provides the basis for sequentially finer grid characterizations, and its concomitant subgrid details. Current UCPs in mesoscale models attempt to capture major and important “structural” and “material” features with urban canopy parameters controlling momentum,

thermodynamics and energetics of the flow. Mesoscale models with urban options may treat UCPs differently, via categorization using dominant land use vs fractional-mosaic (partitioning) approaches. Important aspects of subgrid “details” are ignored; future improvements to models might include the incorporation of sub-grid morphological features perhaps aggregated into canopy parameterizations that have some “meaning” in the forcing equations. The MRA provides an innovative means to perform forensic analyses and descriptions of any urban area, in essence, the DNA-like description of a city (Mouzourides, 2012, 2013). For models, the MRA provides gridded and scaled attributes as well as subgrid information and for a hierarchy of grid sizes. The MRA can, in principle, provide a powerful means to explore and utilize information at the subgrid scale to inform the mesoscale analyses, a very powerful resource for multi-scale modeling studies.

4. SUMMARY AND THE PATH FORWARD:

Preparatory efforts (Prototype) are now underway to test the full detailed development and deploying of the steps cartooned in Fig 7 for a set of city Prototypes representing a variety of cities around the world. Subsequently, after an assessment of these Prototypes, we will extend a general invitation to our urban community to become engaged to achieve the desired worldwide database coverage (Fig 10). An important element in this overall scheme is to grow the acceptance and support of the Community, including users and sponsors. In this stage, we can anticipate the database to grow in coverage as the benefits of participation in this community system become apparent. Further, since urbanization is dynamic as current cities evolve and new ones are created, updates will be necessary, but achievable given that each city will have their initial baseline datasets.

5. REFERENCES:

- Bechtel B, C. Daneke**, 2012: Classification of local Climate Zones based on multiple Earth Observation Data. *IEEE Journal of Selected Topics in Applied Earth Observations and Remote Sensing* 5(4): 1191-1202 [doi [10.1109/JSTARS.2012.2189873](https://doi.org/10.1109/JSTARS.2012.2189873)]
- Burian S, N Augustus, I Jeyachandran and M Brown**, 2007: National Building Statistics Database, Version 2. Los Alamos National Laboratory Rept LA-UR-08-1921, 81 pages
- Ching, J., M Brown, S Burian, F Chen, R Cionco, A Hanna, T Hultgren, T McPherson, D Sailor, H Taha, and D Williams**, 2009: National Urban Database and Access Portal Tool, Bulletin of AMS, DOI: 10.1175/2009BAMS2675.1
- Ching. J.K.S.**, 2013: A perspective on urban canopy modeling for weather climate and air quality applications. *Urban Climate* 3 (2013) 13–39
- Dupont, S, T Otte and J Ching**, 2004: Simulation of meteorological fields within and above urban and rural canopies with a mesoscale model (MM5) *Boundary Layer Meteorology*, 113, 111-158.
- Fritz, S, I McCallum, C Schill, C Perger, L See, D Schepaschenko, M van der Velde, F Kraxner, and M Obersteiner**, (2012), Geo-Wiki: An on line platform for land cover validation and improvement of global land cover. *Environmental Modelling and Software*, 31, 110-123.
- Garrigan, C.**, Sustainable Building: Developing Policies, Tool and Strategies, The Croucher Advanced Study Institute, Hong Kong, 09 Dec 2011. <http://www.arch.cuhk.edu.hk/asi2011/en/programme/lecture%20materials.htm>
- Glotfelty, T, J Ching, M Tewari and F Chen**, NUDAPT 44 City UCP Database for Urbanizing WRF Applications, Proceedings, Eighth International Conf. on Urban Climates, 6-10 August 2012, UCD, Dublin Ireland.
- Jackson, TL, J Feddema, K Oleson, G Bonan and JT Bauer**, 2010: Parameterization of urban characteristics for Global climate modeling. *Annals of the Assoc. of Am. Geog.* 100(4), 848-865.
- Martilli, A, A Clappier, M Rotach**, 2002: An Urban Surface Exchange Parameterization for Mesoscale Models, *Boundary Layer Meteorol.*, 104 261-304.
- Martilli, A**, 2007: Current research and future challenges in urban mesoscale modelling. *Int. J. Climatol.*, 27 1909-1918.
- Mouzourides, P., A Kyprianou, M Neophytou**, 2013: A Scale-Adaptive Approach for Spatially-Varying Urban Morphology Characterization in Boundary Layer Parametrization Using Multi-Resolution Analysis, *Boundary-Layer Meteorol* DOI 10.1007/s10546-013-9848-4

Otte, T, A Lacser, S Dupont and J Ching, 2004: Implementation of an urban canopy parameterization in a mesoscale meteorological model, *J App Meteor.*, 43, 1648-1665.

Stewart, I, T Oke, 2012: Local Climate Zones for Urban Temperature Studies, *Bulletin of the American Meteorological Society*, doi: <http://dx.doi.org/10.1175/BAMS-D-11-00019>.