



Accounting for the climate–carbon feedback in emission metrics

Thomas Gasser^{1,2,a}, Glen P. Peters², Jan S. Fuglestedt², William J. Collins³, Drew T. Shindell⁴, and Philippe Ciais¹

¹Laboratoire des Sciences du Climat et de l'Environnement, LSCE/IPSL, Université Paris-Saclay, CEA – CNRS – UVSQ, 91191 Gif-sur-Yvette, France

²Center for International Climate and Environmental Research – Oslo (CICERO), 0349 Oslo, Norway

³Department of Meteorology, University of Reading, Reading, RG6 6BB, UK

⁴Nicholas School of the Environment, Duke University, Durham, NC 27708, USA

^anow at: International Institute for Applied Systems Analysis (IIASA), 2361 Laxenburg, Austria

Correspondence to: Thomas Gasser (gasser@iiasa.ac.at)

Received: 4 November 2016 – Discussion started: 10 November 2016

Accepted: 20 March 2017 – Published: 10 April 2017

Abstract. Most emission metrics have previously been inconsistently estimated by including the climate–carbon feedback for the reference gas (i.e. CO₂) but not the other species (e.g. CH₄). In the fifth assessment report of the IPCC, a first attempt was made to consistently account for the climate–carbon feedback in emission metrics. This attempt was based on only one study, and therefore the IPCC concluded that more research was needed. Here, we carry out this research. First, using the simple Earth system model OSCAR v2.2, we establish a new impulse response function for the climate–carbon feedback. Second, we use this impulse response function to provide new estimates for the two most common metrics: global warming potential (GWP) and global temperature-change potential (GTP). We find that, when the climate–carbon feedback is correctly accounted for, the emission metrics of non-CO₂ species increase, but in most cases not as much as initially indicated by IPCC. We also find that, when the feedback is removed for both the reference and studied species, these relative metric values only have modest changes compared to when the feedback is included (absolute metrics change more markedly). Including or excluding the climate–carbon feedback ultimately depends on the user's goal, but consistency should be ensured in either case.

1 Introduction

Emission metrics are a tool to compare or combine the climate impact of the emission of different greenhouse gases and other climate forcing agents, typically putting them on a so-called CO₂-equivalent scale. The physical meaning of this scale depends on the climate parameter chosen to calculate the metric (e.g. radiative forcing or temperature change), but also on the time horizon and on whether it is an instantaneous or integrative metric. Emission metrics can be given in absolute terms or in relative terms, the latter being the absolute metric taken relatively to that of a reference gas which is usually CO₂. For instance, GWP100 – the most widely used metric – is a relative metric defined as the ratio of the

cumulative radiative forcing induced after 100 years by 1 kg of a given species over that induced by 1 kg of CO₂. The GWP100 is currently used in UNFCCC emission inventories, climate agreements (e.g. the Kyoto Protocol), and climate policies (e.g. emissions trading systems). Emission metrics are also used to evaluate multi-gas policies, to compare emissions and sinks from countries and/or economic sectors, or simply as zeroth-order models of the climate system. They are used in areas such as life cycle assessment (e.g. Levasseur et al., 2016), ecosystem service study (e.g. Neubauer and Magonigal, 2015) and integrated assessment modelling (e.g. Clarke et al., 2014). More about emission metrics can

be found elsewhere (e.g. Cherubini et al., 2016; Myhre et al., 2013; Shine et al., 2015).

Since emission metrics are based on simple representations of more complex models, there are choices in how components of complex models are incorporated in the metrics. One such component is the climate–carbon feedback. The “climate–carbon feedback” refers to the effect that a changing climate has on the carbon cycle, which impacts atmospheric CO₂, which in turn changes further the climate. In concrete terms: when CO₂ is emitted, the atmospheric CO₂ pool increases. A fraction of this excess atmospheric CO₂ is taken up by the ocean and the terrestrial biosphere (the “carbon sinks”), but as long as a part of the excess CO₂ stays in the atmosphere, it warms the climate. In turn, this warming climate slows down the uptake of the atmospheric CO₂ by the sinks. This slowing-down constitutes a positive feedback – i.e. a warming climate is warmed further through the feedback (Ciais et al., 2013). Rather than a slowing-down of the carbon sinks, it is also possible to view the feedback as a reduction of the carbon sinks uptake efficiency (Raupach et al., 2014). According to models of the coupled carbon cycle–climate system, the climate–carbon feedback has contributed to the observed warming over the last century and will have a large impact in warmer future scenarios (e.g. Ciais et al., 2013; Friedlingstein et al., 2006; Raupach et al., 2014), although there are large uncertainties about the magnitude of this feedback and underlying mechanisms.

The standard metrics provided in the fifth assessment report (AR5) of the IPCC (Myhre et al., 2013; Table 8.A.1) are inconsistent in their treatment of the climate–carbon feedback. While absolute metrics for CO₂ itself do account for the feedback, the absolute metrics for all other species do not. As a result, the relative metrics, defined as the ratio of the absolute metric of a non-CO₂ species over that of CO₂, are inconsistently calculated. Aware of this limitation, the IPCC made a first attempt at including the climate–carbon feedback into metrics in a consistent manner. This attempt was based on an earlier study by Collins et al. (2013), whose main object was not the climate–carbon feedback (but regionalized metrics). Our study is therefore an attempt to assess the robustness of these alternative but tentative metrics proposed by the IPCC (Myhre et al., 2013; Table 8.7).

Here, we carry out an analysis of the climate–carbon feedback and how it can be included in the emission metrics framework. To do so, in Sect. 2, we recall the mathematical framework used to derive emission metrics, and we extend it with a specific term representing the response of the carbon sinks to climate change. In Sect. 3, we use the simple Earth system model OSCAR v2.2 to derive a functional form for this response, and to quantify its numerical parameters. In Sect. 4, we use the extended framework and our new response function to establish new values of metrics that include the climate–carbon feedback, and we compare those with the values otherwise available.

2 Mathematical framework

2.1 Impulse response functions

Emission metrics are usually formulated by means of impulse response functions (IRFs), as it is done in the fifth IPCC report (Myhre et al., 2013). These IRFs are simple models which describe the dynamical response of a subsystem of the Earth system (e.g. the biogeochemical cycle of a given species, or the climate system) to a pulse of perturbation of this subsystem. The response of the subsystem to a more general continuous and time-varying perturbation can be obtained by convolution of the IRF with the time series of the perturbation. The various IRFs used are generally estimated on the basis of idealized simulations made with complex models (e.g. Geoffroy et al., 2013; Joos et al., 1996, 2013). Per construction, IRFs are dynamical models which feature, for example, inertia and hysteresis, but they are linear in nature with respect to the intensity of the perturbation, they represent a fully reversible system, and they can only include feedbacks in an implicit manner. Despite these apparent caveats, the use of such a linear-response approach to emulate the behaviour of complex systems can be warranted by the theory, especially in the case of the climate system (see e.g. Ragone et al., 2016; Lucarini et al., 2017). Note that emission metrics can also be estimated with more complex model simulations (e.g. Tanaka et al., 2009; Sterner and Johansson, 2017), with the strong caveat that the approach lacks the simplicity and transparency of the IRFs.

Now let us illustrate the typical formulation of the simple IRF-based model of the climate change induced by a given species (x). The change in atmospheric concentration of the species (Q^x) can be calculated with a convolution between the time series of anthropogenic emission of this species (E^x) and the IRF for the species’ atmospheric concentration (r_Q^x):

$$Q^x(t) - Q^x(0) = \int_{t'=0}^t E^x(t') r_Q^x(t-t') dt'.$$

In the most general case, the radiative forcing induced by this species (RF^x) is taken as a function (F^x) of its change in atmospheric concentration (e.g. Myhre et al., 1998):

$$RF^x(t) = F^x(Q^x(t) - Q^x(0)).$$

Finally, the change in global mean surface temperature induced by this species (T^x) is again deduced by a convolution of the radiative forcing with the IRF for the climate system. This IRF is broken down into a dynamical term (r_T) and a constant intensity term (λ) that corresponds to the equilibrium climate sensitivity. This gives

$$T^x(t) - T^x(0) = \lambda \int_{t'=0}^t RF^x(t') r_T(t-t') dt'.$$

Typically, the IRF for atmospheric CO₂ is taken from Joos et al. (2013), those for other greenhouse gases are exponential decay functions with a constant e-folding time taken as the “perturbation lifetime” given by Myhre et al. (2013), the radiative forcing functions come from Ramaswamy et al. (2001) with updated radiative efficiencies from Myhre et al. (2013), and the climate IRF is taken from Boucher and Reddy (2008). Note, however, that updates of the climate IRF based on CMIP5 models are available in the literature (Geofroy et al., 2013; Olivie and Peters, 2013) but they have not been widely used so far.

2.2 Formulation of emission metrics

To produce emission metrics IRFs are used, albeit with two important additional assumptions. First, the initial anthropogenic perturbation is actually taken as a pulse of emission at time $t=0$, which we can write formally with the Dirac- δ function and the size of the pulse (E_0) as follows: $E^x(t) = E_0^x \delta(t)$. Strictly speaking, the Dirac- δ is a distribution, and it is the (approximated) identity of the convolution algebra so that the convolution of any function by the Dirac- δ gives back the initial function. Second, since in the metrics framework this pulse is assumed to be very small, the radiative forcing function is approximated to be linear so that we have $RF^x(t) = \varphi^x(Q^x(t) - Q^x(0))$, where φ^x is the constant marginal radiative efficiency of the considered species. Note that the assumption of a very small pulse may be inconsistent with the way the IRFs are actually derived, as it is currently the case for CO₂ (see Appendix A).

From there, we can formulate the absolute global warming potential (AGWP) and the absolute global temperature-change potential (AGTP). Per definition, the AGWP of a species x is the cumulative radiative forcing induced by a pulse of emission of the species, normalized by the size of the pulse, and taken up to a chosen time horizon (H):

$$\begin{aligned} \text{AGWP}^x(H) &= \frac{1}{E_0^x} \int_{t=0}^H \text{RF}^x(t) dt \\ &= \frac{1}{E_0^x} \int_{t=0}^H \varphi^x \int_{t'=0}^H E_0^x \delta(t') r_Q^x(t-t') dt' dt \\ &= \varphi^x \int_{t=0}^H r_Q^x(t) dt. \end{aligned}$$

Per definition, the AGTP of a species x is the instantaneous temperature change induced by a pulse of emission of the species, normalized by the size of the pulse, and taken at a chosen time horizon:

$$\begin{aligned} \text{AGTP}^x(H) &= \frac{1}{E_0^x} [T^x(H) - T^x(0)] \\ &= \frac{1}{E_0^x} \lambda \int_{t=0}^H \varphi^x r_T(H-t) \int_{t'=0}^t E_0^x \delta(t') r_Q^x(t-t') dt' dt \\ &= \varphi^x \lambda \int_{t=0}^H r_Q^x(t) r_T(H-t) dt. \end{aligned}$$

The global warming potential (GWP) and the global temperature-change potential (GTP) are metrics calculated relatively to the reference gas CO₂. Therefore, any of these two metrics is defined as the ratio of its absolute counterpart for the species x over that for CO₂:

$$\text{GWP}^x(H) = \frac{\text{AGWP}^x(H)}{\text{AGWP}^{\text{CO}_2}(H)}$$

and

$$\text{GTP}^x(H) = \frac{\text{AGTP}^x(H)}{\text{AGTP}^{\text{CO}_2}(H)}.$$

We can now detail the inconsistency mentioned in introduction, regarding the way the default GWPs and GTPs are estimated by the IPCC (Myhre et al., 2013; Table 8.A.1). To estimate the absolute metrics for CO₂, the IRF derived by Joos et al. (2013) is used, and one feature of this IRF is that it implicitly includes any feedback between the climate system and the carbon cycle that is also included in the complex carbon–climate models it is calibrated upon. However, the absolute metrics for non-CO₂ species do not include the effect of the warming climate onto the carbon cycle that is induced by the non-CO₂ species. In other words, the climate–carbon feedback is included in the denominator of the GWP and GTP, but *not* in their numerator. The resulting metric values should therefore be regarded as inconsistent.

2.3 Addition of the climate–carbon feedback

To include the climate–carbon feedback in the metric framework, we choose to model the decrease in the carbon sinks efficiency induced by climate change as an additional flux of carbon to the atmosphere, but without changing the atmospheric lifetime of carbon dioxide. Another approach, mathematically equivalent, would be to change the atmospheric lifetime of the gas. However, the latter approach cannot be used with the IRF framework since, per construction, the atmospheric lifetimes of all the species are fixed.

We define the change in the global carbon sinks ΔF . It is positive if the flux goes into the atmosphere, i.e. if the sinks’ efficiency is actually reduced. By analogy with previous IRF-based equations, we propose the following formulation:

$$\Delta F^x(t) = \gamma \int_{t'=0}^t [T^x(t') - T(0)] r_F(t-t') dt'.$$

In this equation, the forcing term is the global mean temperature change induced by the species x . The IRF for the carbon sinks is broken down into two terms: a dynamical term that is r_F , expressed in yr^{-1} , and an intensity term that is γ , expressed in $\text{GtC yr}^{-1} \text{K}^{-1}$. There are two implicit assumptions with this formulation which are discussed hereafter. First, we assume that the carbon sinks response is the same, at global scale and for a given temperature change, whatever the forcing species. Second, we assume that the global mean temperature is a proxy of all the changes in the climate variables that drive a change in the carbon sinks, such as local temperature itself but also precipitation.

To simplify the discussion and avoid quintuple integrals, we introduce the simplified notation \star for the convolution, $a \star b \equiv \int_0^t a(t') b(t-t') dt'$, and note the commutative property of the convolution: $a \star b = b \star a$.

Since the change in carbon sinks is expressed as a new source of CO_2 , one can calculate the additional radiative forcing (ΔRF) induced by a species x through the climate–carbon feedback:

$$\begin{aligned} \Delta \text{RF}^x &= (\varphi^{\text{CO}_2}) \Delta F^x \star r_Q^{\text{CO}_2} \\ &= (\varphi^{\text{CO}_2} \gamma) [T^x - T(0)] \star r_F \star r_Q^{\text{CO}_2} \\ &= (\varphi^{\text{CO}_2} \gamma \lambda) \text{RF}^x \star r_T \star r_F \star r_Q^{\text{CO}_2} \\ &= (\varphi^{\text{CO}_2} \gamma \lambda \varphi^x) [Q^x - Q^x(0)] \star r_T \star r_F \star r_Q^{\text{CO}_2} \\ &= (\varphi^{\text{CO}_2} \gamma \lambda \varphi^x) E^x \star r_Q^x \star r_T \star r_F \star r_Q^{\text{CO}_2} \end{aligned}$$

and similarly with the additional temperature change (ΔT):

$$\begin{aligned} \Delta T^x &= (\lambda) \Delta \text{RF}^x \star r_T \\ &= (\varphi^{\text{CO}_2} \gamma \lambda^2 \varphi^x) E^x \star r_Q^x \star r_T \star r_F \star r_Q^{\text{CO}_2} \star r_T. \end{aligned}$$

We do not need to worry about the endless feedback loop CO_2 –climate– CO_2 and add more terms to these equations, because the carbon dioxide IRF ($r_Q^{\text{CO}_2}$) already accounts for the effect of climate change on the CO_2 concentration.

It is possible to formulate the additional absolute GTP (ΔAGTP) – which is later added to the AGTP without feedback – for the species x :

$$\begin{aligned} \Delta \text{AGTP}^x &= \frac{1}{E_0^x} \delta T^x \\ &= \left(\frac{1}{E_0^x} \varphi^{\text{CO}_2} \gamma \lambda^2 \varphi^x E_0^x \right) \delta \star r_Q^x \star r_T \star r_F \star r_Q^{\text{CO}_2} \star r_T \\ &= (\gamma) r_F \star \underbrace{(\varphi^x \lambda) r_Q^x \star r_T}_{\text{AGTP}^x} \star \underbrace{(\varphi^{\text{CO}_2} \lambda) r_Q^{\text{CO}_2} \star r_T}_{\text{AGTP}^{\text{CO}_2}}, \end{aligned}$$

that is

$$\begin{aligned} \Delta \text{AGTP}^x(H) &= \\ \gamma \int_{t=0}^H r_F(H-t) \int_{t'=0}^t \text{AGTP}^x(t') \text{AGTP}^{\text{CO}_2}(t-t') dt' dt. \end{aligned}$$

To formulate ΔAGWP , it is easier to do the same demonstration if one introduces the Heaviside step function (i.e. the function equal to 1 for $t \geq 0$, and 0 otherwise; noted Θ) and notes that convoluting any function with the Heaviside function is equivalent to integrating it. The definition of AGWP then is

$$\text{AGWP}^x(H) = \frac{1}{E_0^x} \int_{t=0}^H \text{RF}^x(t) dt \equiv \frac{1}{E_0^x} \text{RF}^x \star \Theta.$$

Hence, similarly to the case of ΔAGTP , we have

$$\begin{aligned} \Delta \text{AGWP}^x &= \frac{1}{E_0^x} \Delta \text{RF}^x \star \Theta \\ &= (\gamma) r_F \star \underbrace{(\varphi^x \lambda) r_Q^x \star r_T}_{\text{AGTP}^x} \star \underbrace{\varphi^{\text{CO}_2} r_Q^{\text{CO}_2}}_{\text{AGWP}^{\text{CO}_2}} \star \Theta, \end{aligned}$$

that is

$$\begin{aligned} \Delta \text{AGWP}^x(H) &= \\ \gamma \int_{t=0}^H r_F(H-t) \int_{t'=0}^t \text{AGTP}^x(t') \text{AGWP}^{\text{CO}_2}(t-t') dt' dt. \end{aligned}$$

The above discussion holds in the case of species-dependent climate sensitivity parameters, i.e. if we have λ^x instead of λ to account for climate efficacies (e.g. Hansen et al., 2005). These two formulas, for ΔAGWP and ΔAGTP , are similar to those given by Collins et al. (2013) in their Sect. 5.5, where they implicitly assume that $\gamma r_F(t) = \Gamma \delta(t)$, where Γ is a constant. Collins et al. (2013) therefore assumed that the carbon sinks' response to a pulse of global temperature change was a pulse of size Γ of CO_2 outgassing by the ocean and the terrestrial biosphere, but they did not justify this assumption. The next section investigates whether this assumption holds, and what functional form can be chosen for the dynamical function r_F .

3 Estimating the climate–carbon feedback response

3.1 Experimental setup

We use the compact Earth system model OSCAR v2.2 (Gasser et al., 2017) to establish the IRF of the climate–carbon feedback. It embeds several modules dedicated to

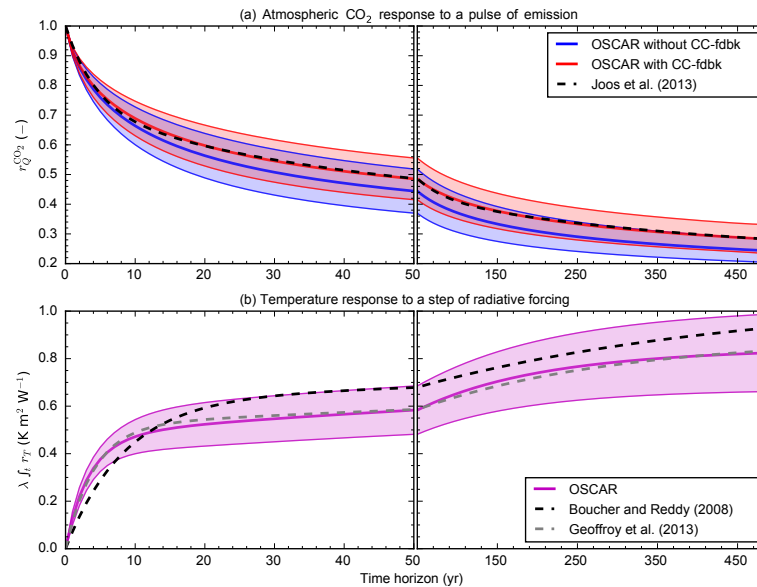


Figure 1. Impulse response functions estimated with OSCAR. **(a)** Response of the atmospheric CO_2 to a pulse of emission, in the case where the climate–carbon feedbacks (“CC-fdbk”) are turned off (in blue), and in the normal case (in red). The responses by OSCAR are compared to that of Joos et al. (2013) used by the IPCC AR5 (dashed black). **(b)** Response of the global mean surface temperature to a step of radiative forcing. The response by OSCAR is compared to that of Boucher and Reddy (2008) used by the IPCC AR5 (dashed black) and to that of Geoffroy et al. (2013) that is based on CMIP5 models (dashed grey). The actual climate IRF (i.e. the response to a pulse) is obtained by taking the derivative of the curve shown in **(b)**. Plain and thick lines show the mean response of OSCAR, while shaded and coloured areas show the ± 1 SD around the mean.

simulating the response of many subsystems of the Earth system; more specifically to our case, it embeds modules for the oceanic carbon cycle, the terrestrial carbon cycle and the climate system. Each of these modules is designed to emulate the sensitivity of more complex – usually spatially explicit – models. In the version used here, the complex models used to calibrate OSCAR were used for the IPCC AR5 via the Coupled Model Intercomparison Project phase 5 (CMIP5). OSCAR includes the following climate–carbon feedbacks: the effect of temperature and precipitation change on net primary productivity of land ecosystems, their heterotrophic respiration, and the rate of occurrence of wildfires, as well as the effect of temperature change on the carbonate chemistry and the stratification of the surface ocean. OSCAR is used in a probabilistic setup, which means that ensembles of simulations are made so as to be able to derive an uncertainty distribution for our results. These Monte Carlo ensembles contain 1200 elements, with each element being the outputs of a simulation done with a set of parameters drawn with equiprobability from the pool of available parameterizations of OSCAR (Gasser et al., 2017). The configuration used here is similar to the one called “offline” by Gasser et al. (2017), and more information as to the basic performance of the model is also provided therein.

Before estimating the IRF for the climate–carbon feedback, we benchmark OSCAR’s IRFs of the carbon cycle and climate system separately against commonly used IRFs. For

the carbon cycle, we follow the protocol by Joos et al. (2013), reproduced in Appendix A, and we repeat it a second time while turning off all the climate–carbon feedbacks of the model. The two carbon dioxide IRFs obtained are shown in Fig. 1a. The IRF obtained when the feedbacks are turned on is very close to the one derived by Joos et al. (2013) and used by the IPCC. When the feedbacks are turned off, the IRF decays faster than when they are on, which means that the carbon sinks are more efficient – as expected. Regarding the climate response, since OSCAR’s climate module is a two-box model with constant coefficients, it is equivalent to an IRF, shown in Fig. 1b. The model’s response is close to the average of 16 CMIP5 models as calculated by Geoffroy et al. (2013), but it differs from the one used in the IPCC AR5 (Boucher and Reddy, 2008). Together the ability of the OSCAR model to reproduce the carbon cycle and climate IRFs derived from up-to-date and complex models suggests that it is also capable of establishing a reasonable IRF for the climate–carbon feedback.

To estimate this climate–carbon feedback IRF, we adopt a protocol largely inspired by that of Joos et al. (2013) for the carbon dioxide IRF. A first simulation is made to calculate the background conditions, in which atmospheric CO_2 and non- CO_2 radiative forcings are prescribed up to 2010 exactly as it is done with the first simulation of the protocol for the carbon dioxide IRF (see Appendix A). These prescribed forcings are then maintained for another 1000 years of sim-

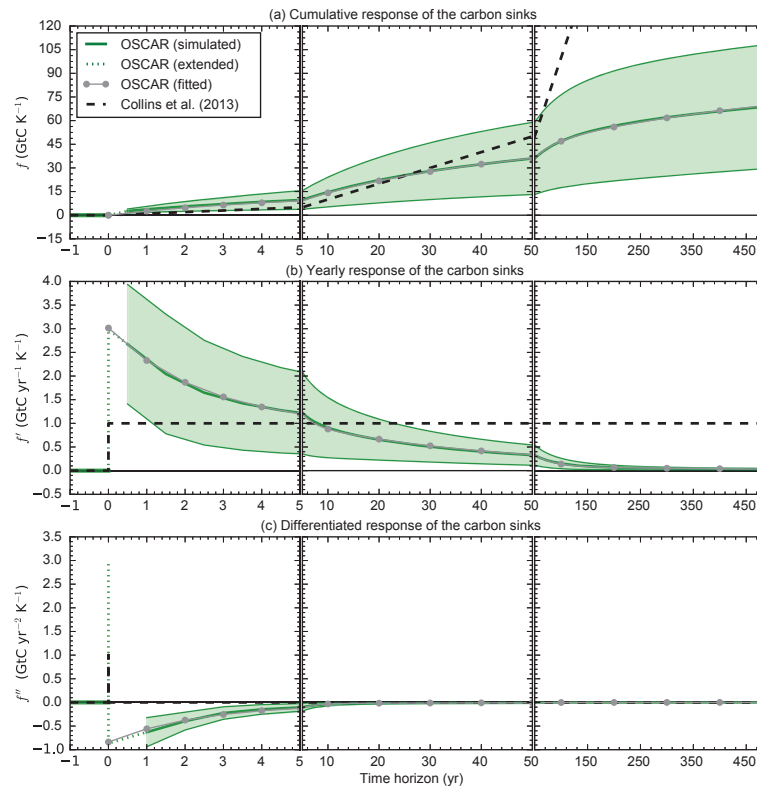


Figure 2. IRF for the carbon sinks response estimated with OSCAR. The response of the carbon sinks to a step of climate change is shown in three different ways: **(a)** as the cumulative amount of CO₂ outgassed by the sinks; **(b)** as the annual amount of CO₂ outgassed by the sinks; **(c)** as the derivative of the annual response to the step of climate change, which is equivalent to the annual response to a pulse of climate change. As in Fig. 1, the plain and thick (green) lines show the mean response from the Monte Carlo ensemble, while the shaded areas show the ± 1 SD. The dotted (green) lines illustrate our arbitrary extension of the response simulated by OSCAR when around $t = 0$ (see Sect. 3.3). The grey lines with round markers are the results of our fit. For comparison, we also show the response assumed by Collins et al. (2013) as dashed black lines.

ulation. The climate variables simulated in this first experiment are saved to be used in the second simulation. In OSCAR, these variables are the air surface temperature (global and regional over land), the sea surface temperature (global), and precipitation (global and regional over land). A second simulation is made in which the same atmospheric CO₂ and non-CO₂ radiative forcings are prescribed, along with the climate variables saved previously. In this second experiment, in the year 2015 and afterwards, a constant climate perturbation is added on top of the prescribed climate from the first experiment. This perturbation has a global average surface temperature change of $+0.2$ °C, but the local temperature and precipitation perturbations do vary spatially, following the response patterns used in OSCAR and calibrated on complex models (Gasser et al., 2017). In our model, these regional response patterns are easy to obtain, since they are proportional to the global average temperature change, but for more complex models the protocol might have to be adapted (see discussion). Finally, the climate–carbon feedback response (not yet the IRF of Sect. 2.3) is calculated as the difference between the global CO₂ flux from the oceanic and terrestrial

carbon reservoirs to the atmosphere simulated in the second and first experiments, normalized by the size of the global temperature step, and setting the time origin ($t = 0$) as the starting year of the step (i.e. 2015).

3.2 Results

Figure 2 shows the carbon sinks' response to the temperature step change simulated by OSCAR v2.2. Figure 2b shows the model change in surface flux due to decreased carbon sinks, Fig. 2a shows the cumulative response from summing the flux and Fig. 2c shows the differentiated response from taking the year-to-year difference in flux. If the yearly response is the “speed” of outgassing of the carbon sinks, the differentiated response is its “acceleration”. It is important to note that the analytical time step of OSCAR is 1 year, and that it is not a process-based model. It is thus impossible to specifically distinguish the very short-term response of the carbon sinks to the step of climate change. Despite this limitation, over the period of time we can study, the response simulated

Table 1. Values of the parameters of the IRF for the climate–carbon feedback (i.e. γr_F). The parameters calibrated on OSCAR for the mean response are given, as well as those for the upper response (i.e. mean + 1 SD; standard deviation) and the lower response (i.e. mean – 1 SD). The latter two responses correspond to the two envelope curves in Fig. 2. The effective timescale τ_{eff} is calculated as $\tau_{\text{eff}} = \sum_i \alpha_i \tau_i$.

	γ (GtC yr ⁻¹ K ⁻¹)	τ_{eff} (yr)	α_1 (–)	α_2 (–)	α_3 (–)	τ_1 (yr)	τ_2 (yr)	τ_3 (yr)
Mean	3.015	28.69	0.6368	0.3322	0.0310	2.376	30.14	490.1
Upper	4.264	32.06	0.5916	0.3679	0.0405	3.333	37.12	404.3
Lower	1.964	27.28	0.8139	0.1761	0.0100*	1.181	38.02	1962.*

* The low weight and high value of the slow timescale indicate that the lower response could be fitted by a two-exponential functional form.

by OSCAR is very different from that assumed by Collins et al. (2013).

In OSCAR, the response of the carbon sinks to a step of climate change is an instantaneous burst of outgassing followed by more outgassing that is, however, decreasing in intensity with time, despite the constant intensity of the forcing (Fig. 2b). We also find the land carbon flux response is about double that from the ocean (not shown). This response is physically very different from Collins et al. (2013) and thus the IPCC, where it is assumed that the carbon sinks response to a pulse of climate change is a pulse of outgassing, or equivalently that their response to a step of climate change is a step of outgassing. This would imply that under a stabilized but changed climate (e.g. at +2 °C on global average) the carbon sinks would endlessly release CO₂ to the atmosphere. This is unrealistic, since the total emitted CO₂ is limited by the size of the natural reservoirs. Our simulations show the carbon sinks behaving in a more reasonable and expected way. Under a step of climate change, the sinks do release CO₂ – which is consistent with the positive sign of the climate–carbon feedback – but the release of CO₂ slows down with time (Fig. 2b), until the sinks reach a new equilibrium under a new climate. This behaviour implies that the total amount of released CO₂ is capped (Fig. 2a) and is given by the difference in the natural carbon pools between the two equilibria under the two different climatic backgrounds. The response to a pulse of climate change is indeed a burst of outgassing; however, after the pulse, the atmospheric CO₂ is now raised above the equilibrium level so the sinks increase, eventually recapturing the lost carbon (Fig. 2c). The latter part of the response was missing from Collins et al. (2013).

3.3 Estimating the IRF

In this section, we estimate a functional form for the climate–carbon feedback IRF that will then be used to estimate new emission metrics. We look only at the time period covered by our simulations with OSCAR, therefore ignoring the discontinuity around $t=0$. Let us call f the function of the time variable that will fit the simulated cumulative response (Fig. 2a). The yearly response (Fig. 2b) is thus fitted by f' ,

its first derivative, and the differentiated response (Fig. 2c) by f'' , its second derivative. The functional form of f is chosen to be a sum of three saturating exponential functions; consequently

$$f(t) = \gamma \left(\alpha_1 \tau_1 \left(1 - \exp\left(-\frac{t}{\tau_1}\right) \right) + \alpha_2 \tau_2 \left(1 - \exp\left(-\frac{t}{\tau_2}\right) \right) + \alpha_3 \tau_3 \left(1 - \exp\left(-\frac{t}{\tau_3}\right) \right) \right)$$

$$f'(t) = \gamma \left(\alpha_1 \exp\left(-\frac{t}{\tau_1}\right) + \alpha_2 \exp\left(-\frac{t}{\tau_2}\right) + \alpha_3 \exp\left(-\frac{t}{\tau_3}\right) \right)$$

$$f''(t) = -\gamma \left(\frac{\alpha_1}{\tau_1} \exp\left(-\frac{t}{\tau_1}\right) + \frac{\alpha_2}{\tau_2} \exp\left(-\frac{t}{\tau_2}\right) + \frac{\alpha_3}{\tau_3} \exp\left(-\frac{t}{\tau_3}\right) \right).$$

Each of the three exponentials is parameterized by a time constant τ_i and a weight α_i , and the overall function is also parameterized by its intensity γ . The γ parameter is introduced here by choice, and it is the same as in Sect. 2.3. Since we introduce a seventh parameter, while only six were needed (we could have defined three γ_i as $\gamma_i = \gamma \alpha_i$), we also add the constraint that $\alpha_1 + \alpha_2 + \alpha_3 = 1$. The choice of an exponential-based functional form is motivated by the fact that all other IRFs typically used for emission metrics are also formulated with exponentials, because it allows closed-form analytical solutions of all the convolutions. Another interest of exponential-based IRFs is the possibility to use Laplace transforms to study the carbon–climate system (Enting, 2007).

To deduce numerical values for the parameters, we fit the f function and its first and second derivatives over the three response curves simulated by OSCAR and shown in Fig. 2. To determine the six freely varying parameters, we proceed in four steps that are detailed in Appendix B. Table 1 shows the parameters obtained by repeating the procedure for the average, upper and lower responses of the ensemble. The intensity parameter of the response (γ) is ~ 3.0 GtC yr⁻¹ K⁻¹. The three time constants of the carbon sinks response are consistent with the atmospheric CO₂ response of OSCAR, but there is more weight placed on the faster modes so that the carbon response to a temperature pulse is faster than the carbon response to a CO₂ pulse. However, it is extremely difficult to relate any of the physical processes to these parameters (Li et al., 2009). We also tried other functional forms for this fit, specifically forms with fewer exponentials, but it

was not possible to capture the dynamics of both the first few years and of the last hundreds of years.

The response obtained with OSCAR exhibits a discontinuity around $t = 0$ (Fig. 2) as the model cannot simulate the response of the carbon sinks over short timescales (< 1 yr). We assume nonetheless that the flux perturbation can be extrapolated back to $t = 0^+$, neglecting any processes faster than a year that we cannot represent. Thus, the discontinuity at $t = 0$ is modelled with a Dirac- δ function whose intensity is equal to the value of the flux at $t = 0^+$. The resulting extension of the simulated response is schematically shown in Fig. 2.

Based on the above, we can finally propose a mathematical expression of the climate–carbon feedback IRF defined in Sect. 2.3:

$$\begin{aligned} \gamma r_F(t) &= f'(0^+) \delta(t) + f''(t) \\ &= \gamma \delta(t) - \gamma \left(\frac{\alpha_1}{\tau_1} \exp\left(-\frac{t}{\tau_1}\right) + \frac{\alpha_2}{\tau_2} \exp\left(-\frac{t}{\tau_2}\right) + \frac{\alpha_3}{\tau_3} \exp\left(-\frac{t}{\tau_3}\right) \right). \end{aligned}$$

The constraint $\alpha_1 + \alpha_2 + \alpha_3 = 1$ implies that $\int_0^{+\infty} r_F(t) dt = 0$.

This means that, in our framework, a pulse of climate change has no effect on the natural carbon pools on the very long-term. In other words, in the response shown in Fig. 2c, the (infinite) recovery period fully compensates for the initial pulse of CO₂ emission. This idealized feature of reversibility is to be expected from the simple and linear modelling framework that the impulse response functions are, since no multiple equilibria is permitted. This is, however, likely unrealistic, given all the existing processes, such as vegetation migration (e.g. Jones et al., 2009) or permafrost thawing (e.g. Koven et al., 2011), that can produce some degree of irreversibility in the system but are ignored here.

3.4 Influence of step size and background conditions

To assess the robustness of our IRF, as well as its domain of validity, we repeat the simulations with different steps of temperature. We derive IRFs for climate change steps corresponding to a global mean temperature increase of +0.01, +0.1, +0.2, +0.5, +1, +2, +3, +4, +5 and +10 °C. We note, however, that for the latter values, and especially for +10 °C, we are pushing the model into a domain where its performance is questionable. The parameters we obtain for each experiment are shown in Fig. 3. The climate–carbon feedback intensity (γ) decreases when the step size increases. Since the intensity is normalized by the step size, this does not mean the feedback is weaker when climate change is stronger. This rather means the carbon sinks response is non-linear in intensity: a doubled step of climate change induces less than a doubled outgassing of the natural reservoirs. This saturation effect can be explained by the limited size of the reservoirs: the fewer carbon remains, the harder it is to get it out (i.e. the more energy is required). The climate–carbon feedback effective timescale (τ_{eff} ; calculated

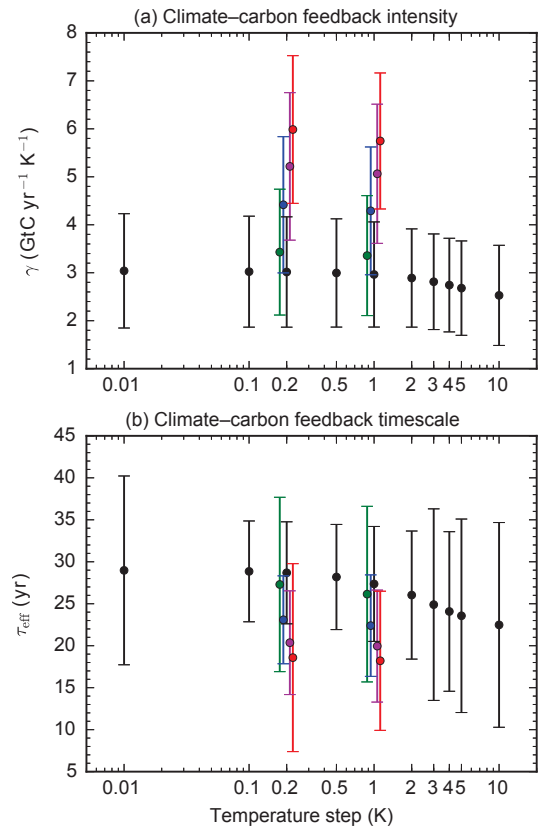


Figure 3. Influence of step size and background on the climate–carbon feedback IRF: (a) on the climate–carbon feedback intensity γ and (b) on the climate–carbon feedback effective timescale τ_{eff} (calculated as $\tau_{\text{eff}} = \sum_i \alpha_i \tau_i$). The effect of the amplitude of the step of climate change (in black) and of the atmospheric CO₂ and climate background following the four RCPs (in colour; green for RCP2.6, blue for RCP4.5, magenta for RCP6.0 and red for RCP8.5) are shown. The uncertainty ranges shown is the ± 1 SD range, corresponding to the “upper” and “lower” responses in Table 1.

as $\tau_{\text{eff}} = \sum_i \alpha_i \tau_i$) also decreases when the step size increases, indicating that under a stronger climate change perturbation the carbon sinks outgassing occurs faster. These two non-linear behaviours appear small for the very small perturbations (i.e. below +1 °C).

We also repeat the simulations with different background conditions, though only for climate change steps corresponding to a global mean temperature increase of +0.2 and +1 °C. Four different background conditions are obtained with a slight alteration of our protocol: the background-setting part of the simulation – i.e. before the step of climate change – is extended to follow each representative concentration pathway (RCP) atmospheric CO₂ and radiative forcing data (Meinshausen et al., 2011) from 2005 to 2100, and the step occurs in 2105 instead of 2015. Figure 3 shows that the higher the atmospheric CO₂ and global warming

of the background, the more intense and faster the climate–carbon feedback, with a doubling of the intensity parameter (γ) and a decrease by one-third of the timescale parameter (τ_{eff}) under RCP8.5. These results can be explained by the increased amount of carbon stored in the natural reservoirs at the time of the climate change step, as in the model the carbon sinks keep removing CO_2 from the atmosphere during the RCP simulation while atmospheric CO_2 is higher than today. These results are also consistent with those regarding the atmospheric CO_2 IRF (Joos et al., 2013): under a higher CO_2 and temperature background, it is harder for the carbon sinks to remove CO_2 from the atmosphere (slower carbon dioxide IRF) and it is easier for them to release the carbon they are already storing (stronger and faster feedback IRF). Both studies – that of Joos et al. (2013) and ours – therefore show that the carbon cycle is a non-linear system that can be only approximatively emulated by impulse response functions.

4 New estimates of emission metrics

Using the estimated IRF for the climate–carbon feedback, we now provide new estimates of the two most common emission metrics, GWP and GTP, for five species spanning a broad range of atmospheric lifetimes and climate impacts: methane (CH_4), nitrous oxide (N_2O), sulfur hexafluoride (SF_6), black carbon (BC) and sulfur dioxide (SO_2). We follow the methodology used by the IPCC in the AR5 (Myhre et al., 2013): we use the perturbation lifetimes for non- CO_2 species and the radiative efficiencies they provide (their Table 8.A.1), the carbon dioxide IRF from Joos et al. (2013), and the climate IRF from Boucher and Reddy (2008). For BC and SO_2 , because the IPCC does not provide a unique set of parameters for these short-lived species, we choose the globally averaged ones from Fuglestad et al. (2010). We also have to settle on one of our climate–carbon feedback IRFs: we choose the one corresponding to present-day background conditions and a global climate change step of $+0.2^\circ\text{C}$. This choice is motivated by the fact that $+0.2^\circ\text{C}$ is approximatively the globally averaged peak warming induced by a pulse of CO_2 emission of 100 GtC, which is itself the value chosen by Joos et al. (2013) and used in the IPCC AR5. We then use the equations given in Sect. 2.3, solving the convolutions numerically with a time step of one tenth of a year. Figure 4 is provided as an illustration of this process whereby we calculate the ΔAGTP of methane, starting from the initial pulse of CH_4 and going through the five successive convolutions described earlier.

The metrics values are shown in Fig. 5 (AGWPs and AGTPs) and Fig. 6 (GWPs and GTPs). In these figures, we show separately the default IPCC metrics (Myhre et al., 2013; Table 8.A.1) and the additional effect of the climate–carbon feedback (i.e. the Δ term that will then be added to the metrics) obtained with both the Collins et al. (2013) for-

mulation and ours. The Δ terms always act to increase the magnitude of both the absolute and relative climate metrics. Although the Δ terms from Collins et al. (2013) are of similar orders of magnitude, their function forms are very different. Since Collins et al. (2013) did not include the re-uptake of carbon following the initial pulse, their Δ terms keep increasing with the time horizon, while ours peak and decline. Eventually, the Collins et al. (2013) Δ term is even larger than the default metric on long timescales, which is never the case with our formulation. Note that there is no Δ term for CO_2 as the climate–carbon feedback is already included in the default metrics; hence, including it in the metrics for non- CO_2 species restores consistency.

In Table 2 (first three rows) we show the climate metrics, including and excluding Δ term, for three chosen time horizons: 20, 50 and 100 years. There, one can see again that the metrics are systematically higher (in absolute value) than in the default IPCC case, when the climate–carbon feedback induced by non- CO_2 species is accounted for, whatever the chosen formulation. Quantitatively, however, for long time horizons, the IPCC (Myhre et al., 2013; Table 8.7), based on Collins et al. (2013), overestimates the effect of the climate–carbon feedback, whereas this effect is underestimated for short time horizons. This can also be seen in Figs. 5 and 6, where the dotted lines are below the dashed ones during the first decades, and over afterwards.

In Table 2 (fourth row), we also provide new estimates of the metrics including the climate–carbon feedback as calculated with OSCAR, but also with the climate IRF updated from that of Boucher and Reddy (2008) to that of Geoffroy et al. (2013). The latter is calibrated on several climate models of the latest generation, while the former appears to be an outlier of the CMIP5 ensemble – see our Fig. 1b and results for “HadGEM2-ES” provided by Geoffroy et al. (2013). In concrete terms, the IRF of Boucher and Reddy (2008), used by the IPCC, is slower but has a higher climate sensitivity than the one calibrated on the CMIP5 multi-model mean. The effect of this update can be seen by comparing the third and fourth rows of our Table 2. Updating the climate IRF has more effect on the GTPs than on the GWPs, which is logically due to the fact that GTP is defined as a function of the temperature (see Sect. 2.2) while GWP is a function of the radiative forcing and is therefore affected by the temperature only through the climate–carbon feedback. Changing the climate IRF impacts the GTPs for all species, but for short-lived species (BC and SO_2 , and to a lesser extent CH_4) a revised climate IRF has an effect as large as correcting the climate–carbon feedback term. This is a reminder of the sensitivity of the GTPs to the representation of the climate timescales (in τ_1), and that these are at least as important as including or neglecting the climate–carbon feedback.

In Table 2 (fifth row), we provide another set of relative metrics, similar to the previous one in that it includes the feedback response calibrated on OSCAR and the updated climate IRF, but it also includes an update of the radiative effi-

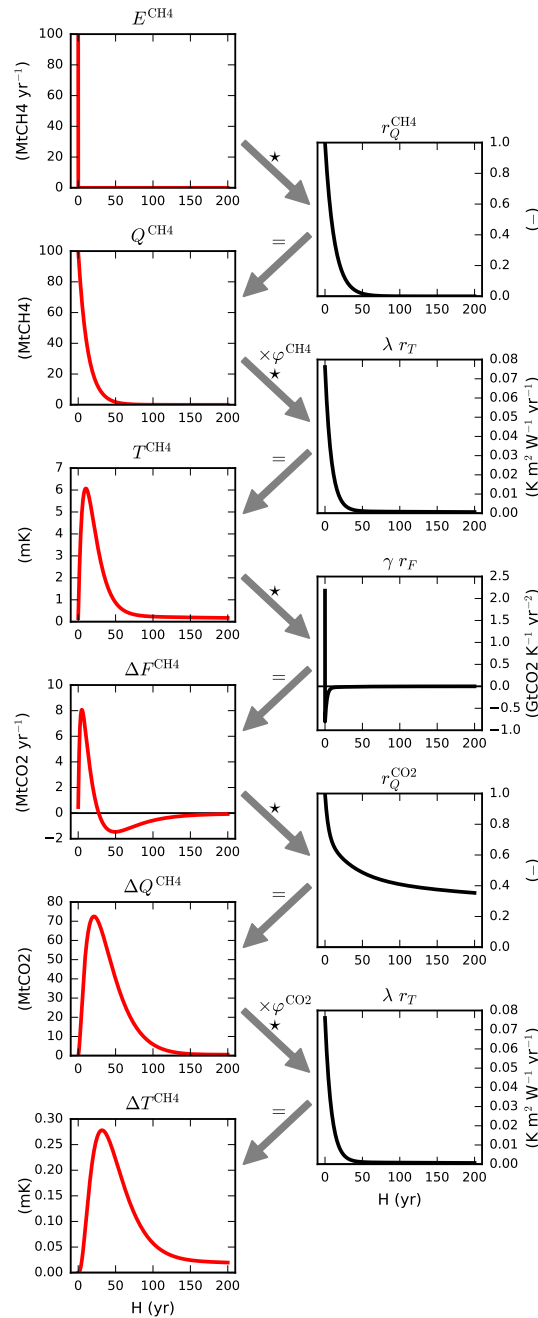


Figure 4. Example of the step-by-step convolutions leading to the ΔAGTP of CH_4 . The figure is read panel by panel, following the arrows and starting in the upper-left corner. The left-hand side panels show the actual physical variables, whereas the right-hand side panels show the IRFs used for the convolutions. We start with a pulse of CH_4 emitted at $t = 0$, of an arbitrary size of 100 Mt CH_4 . This pulse (E^{CH_4}) is then convoluted (symbol \star) with the atmospheric CH_4 IRF ($r_Q^{\text{CH}_4}$) to give the induced change in atmospheric CH_4 (Q^{CH_4}). This atmospheric CH_4 is then multiplied by the CH_4 radiative efficiency (φ^{CH_4}) and convoluted with the climate IRF (λr_T) to give the induced change in global surface temperature (T^{CH_4}). One would stop here to deduce the AGTP by normalizing the obtained temperature change by the size of the initial pulse. In our case, the temperature change is then convoluted with the climate–carbon feedback IRF (γr_F) to give the induced flux of CO_2 released by the sinks (ΔF^{CH_4}). This flux of CO_2 is then convoluted with the carbon dioxide IRF ($r_Q^{\text{CO}_2}$) to give the induced change in atmospheric CO_2 (ΔQ^{CH_4}). Finally, this atmospheric CO_2 is then multiplied by the CO_2 radiative efficiency (φ^{CO_2}) and convoluted with the climate IRF (λr_T) to give the induced change in global surface temperature (ΔT^{CH_4}). The ΔAGTP is deduced by normalizing the obtained temperature change by the size of the initial pulse. An analogous example can be produced for ΔAGWP , in which case one has to replace the last convolution by a convolution with the Heaviside step function (Θ).

Table 2. GWPs and GTPs at a time horizon of 20, 50 and 100 years, in the case of CH₄, N₂O, SF₆, BC and SO₂. The first row (“AR5 default”) shows the base metrics as calculated by the IPCC AR5 (Myhre et al., 2013; Table 8.A.1). The second row (“AR5 + Collins”) shows the metrics proposed in the IPCC AR5 as a first attempt to account for the climate–carbon feedback (their Table 8.7), in which case the climate–carbon feedback IRF (γ_{RF}) is the one of Collins et al. (2013). The third row (“AR5 + OSCAR”) shows the metrics when using our climate–carbon feedback IRF. The fourth row (“AR5 + OSCAR + climate IRF update”) shows the same metrics as the third row, except that the climate IRF (λ_{rT}) is updated to one based on an ensemble of CMIP5 models (Geoffroy et al., 2013). The fifth row (“AR5 + OSCAR + IRF & REs updates”) is the same as the fourth one, except that we also update the radiative efficiencies (REs) of CO₂, CH₄ and N₂O (Etminan et al., 2016). The sixth row (“all OSCAR”) shows the metrics obtained when all IRFs used are based on OSCAR and the radiative efficiencies are also updated, with inclusion of the climate–carbon feedback. The seventh and last row (“all OSCAR no CC-fdbk”) shows the same as the sixth row, but this time without including the feedback: neither for CO₂ nor for non-CO₂ species.

Time horizon (in years)	GWP			GTP		
	20	50	100	20	50	100
	CH ₄ ^a					
AR5 (default) ^b	84	48	28	67	14	4
AR5 + Collins ^b	85	52	34	70	20	11
AR5 + OSCAR	86	52	31	70	18	5
AR5 + OSCAR + climate IRF update	86	51	31	60	14	7
AR5 + OSCAR + IRF and REs updates	96	57	34	67	16	7
All OSCAR	96	57	34	66	18	9
All OSCAR (no CC-fdbk)	96	57	34	65	16	8
	N ₂ O					
AR5 (default) ^b	263	275	264	276	281	234
AR5 + Collins ^b	267	290	297	283	311	297
AR5 + OSCAR	269	289	283	285	304	258
AR5 + OSCAR + climate IRF update	270	288	281	294	300	253
AR5 + OSCAR + IRF and REs updates	256	274	267	279	285	240
All OSCAR	255	273	267	279	283	241
All OSCAR (no CC-fdbk)	257	275	269	282	286	244
	SF ₆					
AR5 (default) ^b	17 500	20 500	23 600	19 000	23 900	28 300
AR5 + Collins ^b	17 800	21 600	26 200	19 400	26 000	33 700
AR5 + OSCAR	17 900	21 500	25 200	19 500	25 500	30 800
AR5 + OSCAR + climate IRF update	18 000	21 500	25 000	20 500	25 900	30 400
AR5 + OSCAR + IRF and REs updates	17 600	21 100	24 500	20 100	25 400	29 800
All OSCAR	17 600	21 000	24 500	20 100	25 200	29 400
All OSCAR (no CC-fdbk)	17 700	21 200	24 800	20 400	25 600	30 200
	BC ^c					
AR5 (default) ^b	1560	736	426	451	71	58
AR5 + Collins ^b	1620	818	519	528	172	165
AR5 + OSCAR	1630	794	465	525	110	69
AR5 + OSCAR + climate IRF update	1630	787	460	210	116	90
AR5 + OSCAR + IRF and REs updates	1600	772	451	206	114	88
All OSCAR	1590	769	450	213	147	105
All OSCAR (no CC-fdbk)	1570	760	448	165	128	101
	SO ₂ ^c					
AR5 (default) ^b	−140	−66	−38	−40	−6	−5
AR5 + Collins ^b	−145	−73	−47	−47	−15	−15
AR5 + OSCAR	−146	−71	−42	−47	−10	−6
AR5 + OSCAR + climate IRF update	−146	−71	−41	−19	−10	−8
AR5 + OSCAR + IRF and REs updates	−143	−69	−41	−18	−10	−8
All OSCAR	−143	−69	−40	−19	−13	−9
All OSCAR (no CC-fdbk)	−141	−68	−40	−15	−11	−9

^a Because we use a numerical resolution method while the IPCC used an analytical one, some values in these rows may differ from the IPCC values by 1 because of the rounding (by 100 in the case of SF₆); these differing values are shown in italic font. ^b This does not account for the oxidation of CH₄ into CO₂ (see e.g. Boucher et al., 2009). ^c Metrics for BC and SO₂ are not directly provided by the IPCC; rather, we use here the IPCC method with lifetimes and radiative efficiencies from Fuglestad et al. (2010).

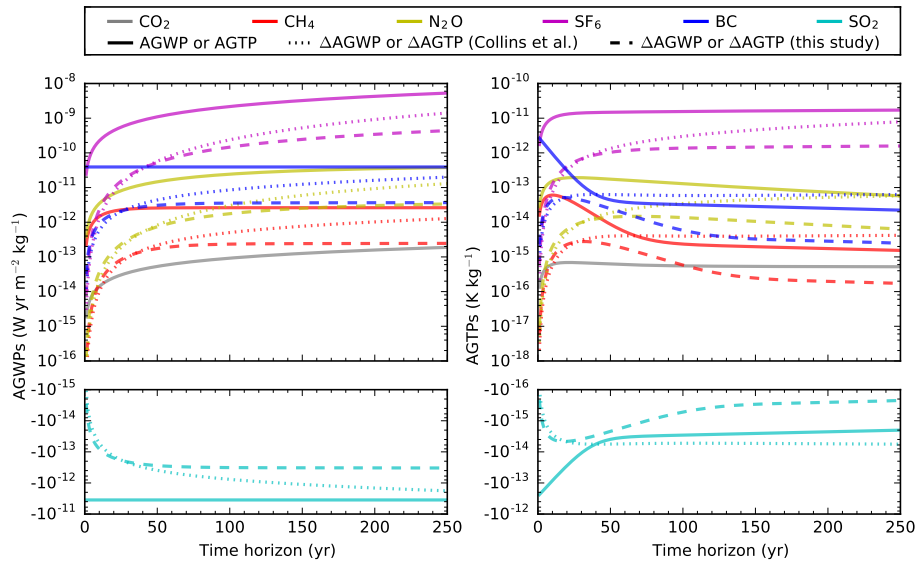


Figure 5. Absolute metrics, in the case of CO₂, CH₄, N₂O, SF₆, BC and SO₂. AGWPs (left-hand side) and AGTPs (right-hand side) obtained using the IPCC AR5 method are shown in solid lines. ΔAGWPs and ΔAGTPs obtained using the climate–carbon feedback IRF by Collins et al. (2013) are shown in dotted lines, and those obtained using ours are in dashed lines. Colours refer to the different species taken here as examples.

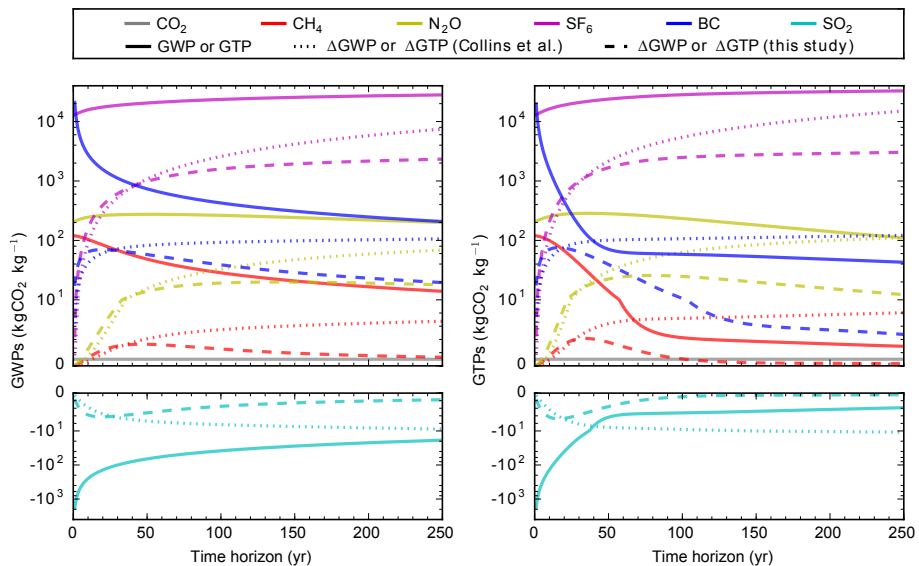


Figure 6. Relative metrics, in the case of CH₄, N₂O, SF₆, BC and SO₂. GWPs (left-hand side) and GTPs (right-hand side) obtained using the IPCC AR5 method are shown in solid lines. ΔGWPs and ΔGTPs obtained using the climate–carbon feedback IRF by Collins et al. (2013) are shown in dotted lines, and those obtained using ours are in dashed lines. Colours refer to the different species taken here as examples. Note that the scale of the y axis is linear between 0 and ±10 and logarithmic afterwards.

ciencies of CO₂, CH₄ and N₂O (Etminan et al., 2016). The new radiative efficiency of CO₂ differs by +2 %, that of CH₄ by +14 %, and that of N₂O by –3 %. These changes logically impact the GWPs and the GTPs, since both metrics are a function of the φ^x parameters. The change is substantial for CH₄: in most cases more so than the update of the climate IRF. Notably, the update of the radiative efficiency of

CO₂ – being the reference gas in relative metrics – implies a change in the metrics’ values of all species, even those whose own radiative efficiency is not changed. These results show that the first-order processes (here, the radiative forcing) may have more impact on the metrics than second-order processes such as the climate–carbon feedback.

Table 3. Uncertainty of GWP and GTP at a time horizon of 20, 50 and 100 years, in the case of CH₄ and N₂O. The relative uncertainties for ± 1 SD are shown. They are calculated on the basis of (i) the Monte Carlo ensembles of simulations made with OSCAR, shown in Figs. 1 and 2 and described in main text, and (ii) the uncertainty ranges given by Myhre et al. (2013; Table 8.SM.12) for radiative efficiencies and perturbation lifetimes.

Time horizon (in years)	CH ₄ *						N ₂ O					
	GWP			GTP			GWP			GTP		
	20	50	100	20	50	100	20	50	100	20	50	100
All OSCAR	17 %	20 %	22 %	23 %	32 %	32 %	10 %	13 %	15 %	14 %	17 %	19 %
All OSCAR (no CC-fdbk)	19 %	22 %	24 %	24 %	34 %	34 %	13 %	16 %	18 %	15 %	19 %	21 %

* This does not account for the oxidation of CH₄ into CO₂.

In Table 2 (last two rows), to fully understand the effect of including or not the climate–carbon feedback in emission metrics, we provide two other sets of metrics: the two are based only on IRFs derived from OSCAR (i.e. the responses shown in Figs. 1 and 2), with one including the feedback for both CO₂ and non-CO₂ while the other does not for either. In both cases (i.e. when the climate–carbon feedback is consistently included or excluded) the metrics are very close. For greenhouse gases (here CH₄, N₂O and SF₆) the difference remains below 10 %, with only very small changes for the GWPs. Only in the case of the GTP of short-lived species (BC and SO₂) and for short time horizons is the difference larger than that, reaching about 30 %.

Finally, we show in Table 3 that the relative uncertainties associated with these OSCAR-based metrics – calculated using our Monte Carlo ensembles and uncertainty ranges from Myhre et al. (2013; Table 8.SM.12) – remain close, no matter whether the climate–carbon feedback is included or not, as long as it is consistent. This can be explained by the fact that the climate–carbon feedback only makes a small contribution to the climate metrics. Therefore, despite being highly uncertain, it does not contribute much to the overall uncertainty.

5 Discussion and conclusion

We have developed a theoretical framework to consistently include the climate–carbon feedback in emission metrics, we have used the simple model OSCAR v2.2 to establish an IRF for the feedback, and, finally, we have used the framework and the new IRF to propose new estimates of the GWP and GTP. The overarching goal of our study was to correct and complement the work initiated by Collins et al. (2013) and reflected by the IPCC, as well as to provide a framework that could be used in future IPCC assessment reports. To this end, we see two technical points that must be discussed: one regarding the underlying assumptions made when we extend the IRF framework to include the climate–carbon feedback, and one regarding the possibility of applying our protocol to more complex models. To conclude, we open up the dis-

cussion to more general considerations about the IRF framework and the interest (or lack thereof) of accounting for the climate–carbon feedback in emission metrics, and about the role of non-CO₂ species in the global climate system.

5.1 Technical aspects

In our extended metrics framework, to account for the climate–carbon feedback, we link the global mean temperature change to the global total change in carbon removal by the natural sinks. This global approach averages over differing regional responses. Consequently, the causal links between (i) global climate change and local climate changes, and (ii) local climate changes and local responses of the ocean or land sinks are accounted for only implicitly with our modelling approach. Regarding the first causal link, since we apply the same IRF (γr_F) whatever the forcing species x , we implicitly assume that the local pattern of climate change is always the same. This is certainly not the case in reality for temperature (e.g. Hansen et al., 2005) or precipitation (e.g. Shine et al., 2015); note that the latter affects the land sink. This could be addressed by repeating our experiment with different patterns of temperature and precipitation corresponding to various forcings so as to deduce species-dependent IRFs in the form, for instance, of a set of γ^x parameters. Regionally varying climate responses have been explored by, for example, Shindell and Faluvegi (2009) and Collins et al. (2013) and could in principle be used to generate species-dependent r_F , although they are very uncertain. Regarding the second causal link, i.e. from local climate change to local carbon sinks response, the local response to climate change can be of a sign different from the global one, and further altered if nutrients such as nitrogen are accounted for (Ciais et al., 2013). Therefore, if IRFs were established at the regional scale, they would not likely resemble the one shown in Fig. 2.

We have established an analytical expression for the climate–carbon feedback IRF with a simple carbon–climate model and following a specific protocol. Although OSCAR performs well in simulating historical changes in the global Earth system (Gasser et al., 2017) and in calculating car-

bon dioxide and climate IRFs (see Fig. 1), our simulations should be reproduced with other – more complex – carbon–climate models to check whether our results hold qualitatively and quantitatively. Ideally, a multi-model modelling exercise such as the one that led to the carbon dioxide IRF (Joos et al., 2013) should also include the simulations required to establish the climate–carbon feedback IRF. For a complex carbon cycle model, the step climate change could be defined as the difference between the end of a CMIP quadrupled CO₂ experiment and the control experiment (simulated by the same model). Note that step changes rather than gradual changes such as +1 % yr⁻¹ CO₂ increase (e.g. Arora et al., 2013) are needed in order to derive the IRFs.

5.2 Conceptual aspects

In a more general perspective, our results raise the question of whether the climate–carbon feedback should be included in emission metrics. Accounting for the feedback implies more simulations in a multi-model exercise similar to that of Joos et al. (2013) for calibration purposes, whereas not accounting for it requires a new set of CO₂ IRFs with the feedback turned off. We have found that including or excluding the climate–carbon feedback in a consistent manner does not greatly change the values of the relative GWPs (only about 2 %). In the case of relative GTPs, the change is slightly larger for greenhouse gases (less than 10 %) and becomes even larger for very short-lived species and over short time horizons (greater than 30 %). In the case of absolute metrics – both AGWPs and AGTPs – these changes are substantial since we are adding a positive feedback to the model. Therefore, the choice of including or excluding the feedback ultimately depends on the user's needs. On the one hand, for the sake of simplicity and transparency, the feedback could be excluded from the evaluation of GWPs, since it avoids the trouble of the five convolutions shown in Fig. 4. On the other hand, if absolute (e.g. time-varying) metrics are used as a first-order model of climate change, one may prefer including the climate–carbon feedback to have a better representation of the system. We provide in Appendices C and D all the analytical expressions needed to calculate the metrics with or without the feedback.

It is also important to note that the above changes in the metrics' value are of the same order of magnitude (and sometimes less) as the change induced by the update of the climate IRF and the radiative efficiencies of greenhouse gases, as shown in Sect. 4. Hence, multiple types of physical properties need to be correctly accounted for. They are also less in magnitude than those induced by the choice of the protocol used to calculate the metrics, such as the background conditions (e.g. Reisinger et al., 2011), or by the choice of a given time horizon (see e.g. Table 2). However, these factors reflect choices about temporal applicability of the metrics rather than refined understanding of physical behaviour.

If the choice is made that this feedback be included in emission metrics, it then raises another question as to what other feedbacks, if any, should also be included. Let us take the climate–wetlands feedback as an example. When climate changes, so does the amount of CH₄ emitted by natural wetlands (e.g. Ciais et al., 2013). This could be included in a manner similar to what we did with the climate–carbon feedback: the atmospheric CH₄ IRF should be re-calculated with interactive wetlands, and a new IRF for the climate–wetlands feedback induced by non-CH₄ forcers should be established. This is feasible, but now one must consider that wetlands emissions are also directly affected by atmospheric CO₂ through CO₂ fertilization and altered stomatal closure that alters the local hydrological cycle (Ciais et al., 2013). Therefore, accounting for the carbon–climate–wetlands nexus requires a much more complex experimental setup. And this is just one example: feedbacks involving biogeochemical cycles in the Earth system are numerous (Ciais et al., 2013). It can be rightfully argued that some of these feedbacks can be neglected, and that others can be safely linearized (such as the CH₄–OH feedback that is included in emission metrics in the AR5). Nevertheless, it appears that we are reaching the limits of the IRF framework, which is linear by essence.

The alternative, to include all the possible feedbacks in emission metrics, is actually to develop model-based estimates similarly to what is done for atmospheric chemistry, for instance to look at species–species interactions (e.g. Shindell et al., 2009), regional specificities (e.g. Collins et al., 2013) or the seasonality of processes and drivers (e.g. Aamaas et al., 2016). However, this is at the expense of the simplicity and transparency that are characteristic of the impulse response functions. For the climate–carbon feedback, Sterner and Johansson (2017) recently proposed a first model-based estimate. Their results show the same difference in physical behaviour when compared to Collins et al. (2013) as ours, therefore strengthening our conclusions as to the need to update the IPCC metrics' estimates.

It could also be argued that, rather than concentrating on improving the level of detail in representing the typical climate impacts associated with GWP and GTP (i.e. radiative forcing and global temperature change, respectively), it would be more useful if metrics were instead expanded to more comprehensively capture the full range of environmental impacts associated with emissions, such as extreme events, crop yields or air pollution (e.g. Shindell, 2015).

Ultimately, the new IRF we established also sheds some light on the climate–carbon feedback and on the role of non-CO₂ species in the global climate system. Using a simple model, a robust framework and idealized experiments, we complement earlier studies on the climate–carbon feedback (e.g. Friedlingstein et al., 2006; Arora et al., 2013) with new qualitative insights as to the dynamics of the feedback. These complex dynamics – summed up in our Fig. 4 – have the peculiar effect of giving a long-term impact to short-lived species. Therefore, our work shows that non-CO₂

species have an additional impact on the global climate system through this feedback loop, as others have shown before (e.g. Gillet and Matthews, 2010; Mahowald, 2011; MacDougall and Knutti, 2016). It must be understood, however, that this “enhancement” of the non-CO₂ species’ impact – as called by MacDougall and Knutti (2016) – does not actually imply that non-CO₂ species are comparatively more important, in the context of climate change mitigation, than initially thought. In fact, while it is true that the climate impact of non-CO₂ species is increased via the climate–carbon feedback (i.e. their absolute metrics are increased), so is the climate impact of CO₂ alone; thus, the relative importance of non-CO₂ species vs. CO₂ when the feedback is included for both remains surprisingly close to the case in which the feedback is not included (i.e. their relative metrics remain similar).

5.3 Concluding remarks

As pointed out in the IPCC AR5, the metric calculations should consistently include the same processes for both CO₂ (denominator) and non-CO₂ emissions (numerator). We have explored including the climate–carbon feedback in both and have revised the preliminary calculations presented in the AR5. Given the complexities of the climate–carbon feedback, it would be beneficial to have more studies, with models of varying complexity, to verify our conclusions. Given that inclusion of the climate–carbon feedback has the greatest impact on metrics with short-lived climate forcers, it would be especially interesting to examine the impact of their inhomogeneous distributions on the spatial pattern of the climate–carbon response.

Ultimately, whether emission metrics should include the climate–carbon feedback is a decision for the user, and we only recommend consistency in the way feedbacks are included or excluded. The trade-off between simplicity and transparency on the one hand, and accuracy of representation on the other hand, has to be weighed by the final user. But metric users should also keep in mind that IRFs and emission metrics are extremely simple models of a complex system, and that sometimes it may be beneficial to use more complex models that better capture multiple and interacting feedback processes.

Data availability. OSCAR outputs are available upon request.

Appendix A: Protocol to simulate the carbon dioxide IRF

The protocol is exactly that of Joos et al. (2013), reproduced here for clarity.

A first simulation is made in a concentration-driven fashion, with prescribed atmospheric CO₂ and prescribed non-CO₂ radiative forcings that follow the estimates by Meinshausen et al. (2011) for the historical period up to 2005, and then those for the RCP4.5 between 2005 and 2010. These prescribed forcings are then maintained constant to their value of the year 2010 during another 1000 years of simulation. In the case of OSCAR, as recommended by Joos et al. (2013), land-use and land-cover change is also prescribed following the historical and then RCP4.5 data of Hurtt et al. (2011), and then stopped after 2010. The outputs from this first simulation are used to deduce the anthropogenic emissions of CO₂ that are compatible with the prescribed atmospheric CO₂, through simple mass balance of the carbon element (see e.g. Gasser et al., 2015).

A second simulation is made in an emission-driven fashion with the same prescribed non-CO₂ radiative forcings and with the compatible CO₂ emissions deduced from the first simulation, with the only purpose of checking that the atmospheric CO₂ concentration simulated is the same as the one prescribed in the first simulation.

A third and final simulation is made, similar to the second one except that in 2015, on top of the compatible emissions, a pulse of 100 Gt of carbon is added to the atmosphere. The carbon dioxide IRF seen in Fig. 1a is simply deduced as the difference between the atmospheric CO₂ simulated in the third and second experiments, normalized by the size of the pulse, and setting the time origin ($t = 0$) as the year of the pulse (i.e. 2015).

Specific to our study, we also make simulations following this protocol but with the climate–carbon feedbacks “turned off”. This is achieved by prescribing the climate simulated by the second experiment to the third one.

Appendix B: Protocol to fit the climate–carbon feedback IRF

First, we fit a first-guess value for τ_1 , using the differentiated response (Fig. 2c) only over the first five (annual) time steps, and assuming that f'' can be approximated by a one-exponential function over this short period of time. Second, we fit a first-guess value for γ and α_1 , using the yearly response (Fig. 2b) also over the first five time steps, and assuming that f' can also be approximated by a one-exponential function whose time constant τ_1 is the one estimated during the first step. Third, we fit a first-guess value for the remaining parameters, i.e. τ_2 , τ_3 and α_2 , using the cumulative response (Fig. 2a) over the whole simulation, and using the parameters determined in the first and second steps for f . Fourth, we fit the final values of the six parameters,

using the yearly response (Fig. 2b) but this time over the whole simulation, and using the six parameters previously estimated as first guesses of the parameters of f' . All fits follow a least squares method, with the additional constraints that $0 < \alpha_i < 1$ and $\alpha_3 = 1 - \alpha_1 - \alpha_2$. Only the actual outputs of OSCAR are used to fit – i.e. the “extended” part shown in Fig. 2 is not used.

Appendix C: Analytical expressions of the IRFs used in this study

C1 Carbon dioxide response

Joos et al. (2013):

$$r_Q^{\text{CO}_2}(t) = 0.2173 + 0.2763 \exp\left(-\frac{t}{4.304}\right) + 0.2824 \exp\left(-\frac{t}{36.54}\right) + 0.2240 \exp\left(-\frac{t}{394.4}\right).$$

OSCAR v2.2, with climate–carbon feedback (average of ensemble):

$$r_Q^{\text{CO}_2}(t) = 0.2366 + 0.2673 \exp\left(-\frac{t}{4.272}\right) + 0.2712 \exp\left(-\frac{t}{33.10}\right) + 0.2249 \exp\left(-\frac{t}{302.4}\right).$$

OSCAR v2.2, without climate–carbon feedback (average of ensemble):

$$r_Q^{\text{CO}_2}(t) = 0.2033 + 0.3016 \exp\left(-\frac{t}{4.736}\right) + 0.2836 \exp\left(-\frac{t}{34.09}\right) + 0.2115 \exp\left(-\frac{t}{288.4}\right).$$

C2 Climate response

Boucher and Reddy (2008):

$$\lambda_{rT}(t) = 1.06 \left(\frac{0.595}{8.4} \exp\left(-\frac{t}{8.4}\right) + \frac{0.405}{409.5} \exp\left(-\frac{t}{409.5}\right) \right).$$

Geoffroy et al. (2013):

$$\lambda_{rT}(t) = 0.885 \left(\frac{0.587}{4.1} \exp\left(-\frac{t}{4.1}\right) + \frac{0.413}{249} \exp\left(-\frac{t}{249}\right) \right).$$

OSCAR v2.2 (average of ensemble):

$$\lambda_{rT}(t) = 0.852 \left(\frac{0.572}{3.50} \exp\left(-\frac{t}{3.50}\right) + \frac{0.428}{166} \exp\left(-\frac{t}{166}\right) \right).$$

C3 Climate–carbon feedback response

Collins et al. (2013):

$$\gamma r_F(t) = 1.0\delta(t).$$

OSCAR v2.2 (average of ensemble):

$$\gamma r_F(t) = 3.015\delta(t) - 3.015 \left(\frac{0.6368}{2.376} \exp\left(-\frac{t}{2.376}\right) + \frac{0.3322}{30.14} \exp\left(-\frac{t}{30.14}\right) + \frac{0.0310}{490.1} \exp\left(-\frac{t}{490.1}\right) \right).$$

Appendix D: Other parameters used in this study

D1 Radiative efficiencies

The following values include the effect of any overlap between the absorption bands of CO₂, CH₄ and N₂O (Myhre et al., 1998; Etminan et al., 2016). They also include some indirect effects: increase in stratospheric water vapour and tropospheric ozone for CH₄, and enhancement of the methane atmospheric sinks for N₂O (Myhre et al., 2013; Sects. 8.SM.11.3.2 and 8.SM.11.3.3). Note that these indirect effects are not affected by the update of the direct radiative efficiency by Etminan et al. (2016). The background concentration is kept to that of 2011, as in IPCC AR5 (Myhre et al., 2013; Sect. 8.SM.11.1).

Myhre et al. (2013):

$$\varphi^{\text{CO}_2} = 1.76 \times 10^{-15} \text{ W m}^{-2} \text{ kg CO}_2^{-1}$$

$$\varphi^{\text{CH}_4} = 2.11 \times 10^{-13} \text{ W m}^{-2} \text{ kg CH}_4^{-1}$$

$$\varphi^{\text{N}_2\text{O}} = 3.57 \times 10^{-13} \text{ W m}^{-2} \text{ kg N}_2\text{O}^{-1}$$

$$\varphi^{\text{SF}_6} = 2.20 \times 10^{-11} \text{ W m}^{-2} \text{ kg SF}_6^{-1}.$$

Etminan et al. (2016):

$$\varphi^{\text{CO}_2} = 1.79 \times 10^{-15} \text{ W m}^{-2} \text{ kg CO}_2^{-1}$$

$$\varphi^{\text{CH}_4} = 2.39 \times 10^{-13} \text{ W m}^{-2} \text{ kg CH}_4^{-1}$$

$$\varphi^{\text{N}_2\text{O}} = 3.46 \times 10^{-13} \text{ W m}^{-2} \text{ kg N}_2\text{O}^{-1}.$$

Fuglestad et al. (2010):

$$\varphi^{\text{SO}_2} = -3.2 \times 10^{-10} \text{ W m}^{-2} \text{ kg SO}_2^{-1}$$

$$\varphi^{\text{BC}} = 1.96 \times 10^{-9} \text{ W m}^{-2} \text{ kg}^{-1}.$$

D2 Perturbation lifetimes

These are used to define the non-CO₂ atmospheric concentration IRFs: $r_Q^x(t) = \exp(-t/\tau^x)$.

Myhre et al. (2013):

$$\tau^{\text{CH}_4} = 12.4 \text{ yr}$$

$$\tau^{\text{N}_2\text{O}} = 121 \text{ yr}$$

$$\tau^{\text{SF}_6} = 3200 \text{ yr}.$$

Fuglestad et al. (2010):

$$\tau^{\text{SO}_2} = 0.011 \text{ yr}$$

$$\tau^{\text{BC}} = 0.020 \text{ yr}.$$

Competing interests. The authors declare that they have no conflict of interest.

Acknowledgements. This work was partially funded by a visiting researcher grant from the Research Council of Norway (#249972). Thomas Gasser was also supported by the European Research Council Synergy project IMBALANCE-P (grant ERC-2013-SyG-610028). Glen P. Peters, William J. Collins, Drew T. Shindell and Jan S. Fuglestedt were supported by the Research Council of Norway (project #235548). Computing was done on the IPSL Prodiguer-Ciclad facility, which is supported by CNRS, UPMC, and Labex L-IPSL, and funded by the ANR (grant #ANR-10-LABX-0018) and the European FP7 IS-ENES2 project (grant #312979).

Edited by: V. Lucarini

Reviewed by: K. T. Tanaka and one anonymous referee

References

- Aamaas, B., Berntsen, T. K., Fuglestedt, J. S., Shine, K. P., and Bellouin, N.: Regional emission metrics for short-lived climate forcers from multiple models, *Atmos. Chem. Phys.*, 16, 7451–7468, doi:10.5194/acp-16-7451-2016, 2016.
- Arora, V. K., Boer, G. J., Friedlingstein, P., Eby, M., Jones, C. D., Christian, J. R., Bonan, G., Bopp, L., Brovkin, V., Cadule, P., Hajima, T., Ilyina, T., Lindsay, K., Tjiputra, J. F., and Wu, T.: Carbon–Concentration and Carbon–Climate Feedbacks in CMIP5 Earth System Models, *J. Climate*, 26, 5289–5314, 2013.
- Boucher, O. and Reddy, M. S.: Climate trade-off between black carbon and carbon dioxide emissions, *Energy Policy*, 36, 193–200, 2008.
- Boucher, O., Friedlingstein, P., Collins, B., and Shine, K. P.: The indirect global warming potential and global temperature change potential due to methane oxidation, *Environ. Res. Lett.*, 4, 044007, doi:10.1088/1748-9326/4/4/044007, 2009.
- Cherubini, F., Fuglestedt, J., Gasser, T., Reisinger, A., Cavalett, O., Huijbregts, M. A. J., Johansson, D. J. A., Jørgensen, S. V., Raugei, M., Schivley, G., Strømman, A. H., Tanaka, K., and Levasseur, A.: Bridging the gap between impact assessment methods and climate science, *Environ. Sci. Policy*, 64, 129–140, 2016.
- Ciais, P., Sabine, C., Bala, G., Bopp, L., Brovkin, V., Canadell, J., Chhabra, A., DeFries, R., Galloway, J., Heimann, M., Jones, C., Le Quéré, C., Myneni, R. B., Piao, S., and Thornton, P.: Carbon and Other Biogeochemical Cycles, in: *Climate Change 2013: The Physical Science Basis. Contribution of Working Group I to the Fifth Assessment Report of the Intergovernmental Panel on Climate Change*, edited by: Stocker, T. F., Qin, D., Plattner, G.-K., Tignor, M., Allen, S. K., Boschung, J., Nauels, A., Xia, Y., Bex, V., and Midgley, P. M., Cambridge University Press, Cambridge, UK and New York, NY, USA, 2013.
- Clarke, L., Jiang, K., Akimoto, K., Babiker, M., Blanford, G., Fisher-Vanden, K., Hourcade, J.-C., Krey, V., Kriegler, E., Löschel, A., McCollum, D., Paltsev, S., Rose, S., Shukla, P. R., Tavoni, M., van der Zwaan, B. C. C., and van Vuuren, D. P.: Assessing Transformation Pathways, in: *Climate Change 2014: Mitigation of Climate Change, Contribution of Working Group III to the Fifth Assessment Report of the Intergovernmental Panel on Climate Change*, edited by: Edenhofer, O., Pichs-Madruga, R., Sokona, Y., Farahani, E., Kadner, S., Seyboth, K., Adler, A., Baum, I., Brunner, S., Eickemeier, P., Kriemann, B., Savolainen, J., Schlömer, S., von Stechow, C., Zwickel, T., and Minx, J. C., Cambridge University Press, Cambridge, UK and New York, NY, USA, 2014.
- Collins, W. J., Fry, M. M., Yu, H., Fuglestedt, J. S., Shindell, D. T., and West, J. J.: Global and regional temperature-change potentials for near-term climate forcers, *Atmos. Chem. Phys.*, 13, 2471–2485, doi:10.5194/acp-13-2471-2013, 2013.
- Enting, I. G.: Laplace transform analysis of the carbon cycle, *Environ. Model. Softw.*, 22, 1488–1497, 2007.
- Etmann, M., Myhre, G., Highwood, E. J., and Shine, K. P.: Radiative forcing of carbon dioxide, methane, and nitrous oxide: A significant revision of the methane radiative forcing, *Geophys. Res. Lett.*, 43, 12614–12623, 2016.
- Friedlingstein, P., Cox, P., Betts, R., Bopp, L., von Bloh, W., Brovkin, V., Cadule, P., Doney, S., Eby, M., Fung, I., Bala, G., John, J., Jones, C., Joos, F., Kato, T., Kawamiya, M., Knorr, W., Lindsay, K., Matthews, H. D., Raddatz, T., Rayner, P., Rieck, C., Roeckner, E., Schnitzler, K.-G., Schnur, R., Strassmann, K., Weaver, A. J., Yoshikawa, C., and Zeng, N.: Climate–Carbon Cycle Feedback Analysis: Results from the C4MIP Model Inter-comparison, *J. Climate*, 19, 3337–3353, 2006.
- Fuglestedt, J. S., Shine, K. P., Berntsen, T., Cook, J., Lee, D. S., Stenke, A., Skeie, R. B., Velders, G. J. M., and Waitz, I. A.: Transport impacts on atmosphere and climate: Metrics, *Atmos. Environ.*, 44, 4648–4677, 2010.
- Gasser, T., Guivarch, C., Tachiiri, K., Jones, C. D., and Ciais, P.: Negative emissions physically needed to keep global warming below 2 °C, *Nat. Commun.*, 6, 7958, doi:10.1038/ncomms8958, 2015.
- Gasser, T., Ciais, P., Boucher, O., Quilcaille, Y., Tortora, M., Bopp, L., and Hauglustaine, D.: The compact Earth system model OSCAR v2.2: description and first results, *Geosci. Model Dev.*, 10, 271–319, doi:10.5194/gmd-10-271-2017, 2017.
- Geoffroy, O., Saint-Martin, D., Olivé, D. J. L., Voldoire, A., Bellon, G., and Tytéca, S.: Transient Climate Response in a Two-Layer Energy-Balance Model. Part I: Analytical Solution and Parameter Calibration Using CMIP5 AOGCM Experiments, *J. Climate*, 26, 1841–1857, 2013.
- Gillett, N. P. and Matthews, H. D.: Accounting for carbon cycle feedbacks in a comparison of the global warming effects of greenhouse gases, *Environ. Res. Lett.*, 5, 034011, doi:10.1088/1748-9326/5/3/034011, 2010.
- Hansen, J., Sato, M., Ruedy, R., Nazarenko, L., Lacis, A., Schmidt, G. A., Russell, G., Aleinov, I., Bauer, M., Bauer, S., Bell, N., Cairns, B., Canuto, V., Chandler, M., Cheng, Y., Del Genio, A., Faluvegi, G., Fleming, E., Friend, A., Hall, T., Jackman, C., Kelley, M., Kiang, N., Koch, D., Lean, J., Lerner, J., Lo, K., Menon, S., Miller, R., Minnis, P., Novakov, T., Oinas, V., Perlwitz, J., Perlwitz, J., Rind, D., Romanou, A., Shindell, D., Stone, P., Sun, S., Tausnev, N., Thresher, D., Wielicki, B., Wong, T., Yao, M., and Zhang, S.: Efficacy of climate forcings, *J. Geophys. Res.-Atmos.*, 110, D18104, doi:10.1029/2005JD005776, 2005.
- Hurt, G. C., Chini, L. P., Frohking, S., Betts, R. A., Feddema, J., Fischer, G., Fisk, J. P., Hibbard, K., Houghton, R. A., Janetos, A.,

- Jones, C. D., Kindermann, G., Kinoshita, T., Klein Goldewijk, K., Riahi, K., Shevliakova, E., Smith, S., Stehfest, E., Thomson, A., Thornton, P., Vuuren, D. P., and Wang, Y. P.: Harmonization of land-use scenarios for the period 1500–2100: 600 years of global gridded annual land-use transitions, wood harvest, and resulting secondary lands, *Climatic Change*, 109, 117–161, 2011.
- Jones, C., Lowe, J., Liddicoat, S., and Betts, R.: Committed terrestrial ecosystem changes due to climate change, *Nat. Geosci.*, 2, 484–487, 2009.
- Joos, F., Bruno, M., Fink, R., Siegenthaler, U., Stocker, T. F., Le Quééré, C., and Sarmiento, J. L.: An efficient and accurate representation of complex oceanic and biospheric models of anthropogenic carbon uptake, *Tellus B*, 48, 397–417, doi:10.1034/j.1600-0889.1996.t01-2-00006.x, 1996.
- Joos, F., Roth, R., Fuglestedt, J. S., Peters, G. P., Enting, I. G., von Bloh, W., Brovkin, V., Burke, E. J., Eby, M., Edwards, N. R., Friedrich, T., Frölicher, T. L., Halloran, P. R., Holden, P. B., Jones, C., Kleinen, T., Mackenzie, F. T., Matsumoto, K., Meinshausen, M., Plattner, G.-K., Reisinger, A., Segschneider, J., Shaffer, G., Steinacher, M., Strassmann, K., Tanaka, K., Timmermann, A., and Weaver, A. J.: Carbon dioxide and climate impulse response functions for the computation of greenhouse gas metrics: a multi-model analysis, *Atmos. Chem. Phys.*, 13, 2793–2825, doi:10.5194/acp-13-2793-2013, 2013.
- Koven, C. D., Ringeval, B., Friedlingstein, P., Ciais, P., Cadule, P., Khvorostyanov, D., Krinner, G., and Tarnocai, C.: Permafrost carbon-climate feedbacks accelerate global warming, *P. Natl. Acad. Sci.*, 108, 14769–14774, 2011.
- Levasseur, A., Cavalett, O., Fuglestedt, J. S., Gasser, T., Johansson, D. J. A., Jørgensen, S. V., Raugei, M., Reisinger, A., Schivley, G., Strømman, A., Tanaka, K., and Cherubini, F.: Enhancing life cycle impact assessment from climate science: Review of recent findings and recommendations for application to LCA, *Ecol. Indic.*, 71, 163–174, 2016.
- Li, S., Jarvis, A. J., and Leedal, D. T.: Are response function representations of the global carbon cycle ever interpretable?, *Tellus B*, 61, 361–371, 2009.
- Lucarini, V., Ragone, F., and Lunkeit, F.: Predicting Climate Change Using Response Theory: Global Averages and Spatial Patterns, *J. Stat. Phys.*, 166, 1036–1064, 2017.
- MacDougall, A. H. and Knutti, R.: Enhancement of non-CO₂ radiative forcing via intensified carbon cycle feedbacks, *Geophys. Res. Lett.*, 43, 5833–5840, 2016.
- Mahowald, N.: Aerosol Indirect Effect on Biogeochemical Cycles and Climate, *Science*, 334, 794–796, 2011.
- Meinshausen, M., Smith, S. J., Calvin, K., Daniel, J. S., Kainuma, M. L. T., Lamarque, J.-F., Matsumoto, K., Montzka, S. A., Raper, S. C. B., Riahi, K., Thomson, A., Velders, G. J. M., and van Vuuren, D. P. P.: The RCP greenhouse gas concentrations and their extensions from 1765 to 2300, *Climatic Change*, 109, 213–241, 2011.
- Myhre, G., Highwood, E. J., Shine, K. P., and Stordal, F.: New estimates of radiative forcing due to well mixed greenhouse gases, *Geophys. Res. Lett.*, 25, 2715–2718, 1998.
- Myhre, G., Shindell, D., Breion, F.-M., Collins, W., Fuglestedt, J., Huang, J., Koch, D., Lamarque, J.-F., Lee, D., Mendoza, B., Nakajima, T., Robock, A., Stephens, G., Takemura, T., and Zhang, H.: Anthropogenic and Natural Radiative Forcing, in: *Climate Change 2013: The Physical Science Basis. Contribution of Working Group I to the Fifth Assessment Report of the Intergovernmental Panel on Climate Change*, edited by: Stocker, T. F., Qin, D., Plattner, G.-K., Tignor, M., Allen, S. K., Boschung, J., Nauels, A., Xia, Y., Bex, V., and Midgley, P. M., Cambridge University Press, Cambridge, UK and New York, NY, USA, 2013.
- Neubauer, S. C. and Megonigal, J. P.: Moving Beyond Global Warming Potentials to Quantify the Climatic Role of Ecosystems, *Ecosystems*, 18, 1000–1013, 2015.
- Olivié, D. J. L. and Peters, G. P.: Variation in emission metrics due to variation in CO₂ and temperature impulse response functions, *Earth Syst. Dynam.*, 4, 267–286, doi:10.5194/esd-4-267-2013, 2013.
- Ragone, F., Lucarini, V., and Lunkeit, F.: A new framework for climate sensitivity and prediction: a modelling perspective, *Clim. Dynam.*, 46, 1459–1471, 2016.
- Ramaswamy, V., Boucher, O., Haigh, J., Hauglustaine, D., Haywood, J., Myhre, G., Nakajima, T., Shi, G. Y., and Solomon, S.: Radiative Forcing of Climate Change, in: *Climate Change 2001: The Scientific Basis, Contribution of Working Group I to the Third Assessment Report of the Intergovernmental Panel on Climate Change*, edited by: Houghton, J. T., Ding, Y., Griggs, D. J., Noguer, M., van der Linden, P. J., Dai, X., Maskell, K., and Johnson, C. A., Cambridge University Press, Cambridge, UK and New York, NY, USA, 2001.
- Raupach, M. R., Gloor, M., Sarmiento, J. L., Canadell, J. G., Frölicher, T. L., Gasser, T., Houghton, R. A., Le Quééré, C., and Trudinger, C. M.: The declining uptake rate of atmospheric CO₂ by land and ocean sinks, *Biogeosciences*, 11, 3453–3475, doi:10.5194/bg-11-3453-2014, 2014.
- Reisinger, A., Meinshausen, M., and Manning, M.: Future changes in global warming potentials under representative concentration pathways, *Environ. Res. Lett.*, 6, 024020, doi:10.1088/1748-9326/6/2/024020, 2011.
- Shindell, D. T.: The social cost of atmospheric release, *Climatic Change*, 130, 313–326, 2015.
- Shindell, D. T. and Faluvegi, G.: Climate response to regional radiative forcing during the twentieth century, *Nat. Geosci.*, 2, 294–300, 2009.
- Shindell, D. T., Faluvegi, G., Koch, D. M., Schmidt, G. A., Unger, N., and Bauer, S. E.: Improved Attribution of Climate Forcing to Emissions, *Science*, 326, 716–718, 2009.
- Shine, K. P., Allan, R. P., Collins, W. J., and Fuglestedt, J. S.: Metrics for linking emissions of gases and aerosols to global precipitation changes, *Earth Syst. Dynam.*, 6, 525–540, doi:10.5194/esd-6-525-2015, 2015.
- Sterner, E. O. and Johansson, D. J. A.: The effect of climate–carbon cycle feedbacks on emission metrics, *Environ. Res. Lett.*, 12, 034019, doi:10.1088/1748-9326/aa61dc, 2017.
- Tanaka, K., O’Neil, B. C., Rokityanskiy, D., Obersteiner, M., and Tol, R.: Evaluating Global Warming Potentials with historical temperature, *Climatic Change*, 96, 443–466, 2009.