

**CORRIGENDUM • OPEN ACCESS**

## Corrigendum: global mean temperature indicators linked to warming levels avoiding climate risks (2018 *Environ. Res. Lett.* [13 064015](#))

To cite this article: Peter Pfliederer *et al* 2020 *Environ. Res. Lett.* **15** 059501

View the [article online](#) for updates and enhancements.

## Environmental Research Letters



## CORRIGENDUM

Corrigendum: global mean temperature indicators linked to warming levels avoiding climate risks (2018 *Environ. Res. Lett.* **13** 064015)

## OPEN ACCESS

RECEIVED  
30 January 2020ACCEPTED FOR PUBLICATION  
7 February 2020PUBLISHED  
12 May 2020Original content from this work may be used under the terms of the [Creative Commons Attribution 4.0 licence](https://creativecommons.org/licenses/by/4.0/).

Any further distribution of this work must maintain attribution to the author(s) and the title of the work, journal citation and DOI.

Peter Pfleiderer<sup>1,2,3,7</sup> , Carl-Friedrich Schleussner<sup>1,2,3</sup>, Matthias Mengel<sup>2</sup> and Joeri Rogelj<sup>4,5,6</sup>

- <sup>1</sup> Climate Analytics, Berlin, Germany  
<sup>2</sup> Potsdam Institute for Climate Impact Research, Potsdam, Germany  
<sup>3</sup> IRITHEsSys, Humboldt University, Berlin, Germany  
<sup>4</sup> Grantham Institute, Imperial College London, London, United Kingdom  
<sup>5</sup> International Institute for Applied Systems Analysis (IIASA), Laxenburg, Austria  
<sup>6</sup> Institute for Atmospheric and Climate Science, ETH Zürich, Zürich, Switzerland  
<sup>7</sup> Author to whom any correspondence should be addressed.

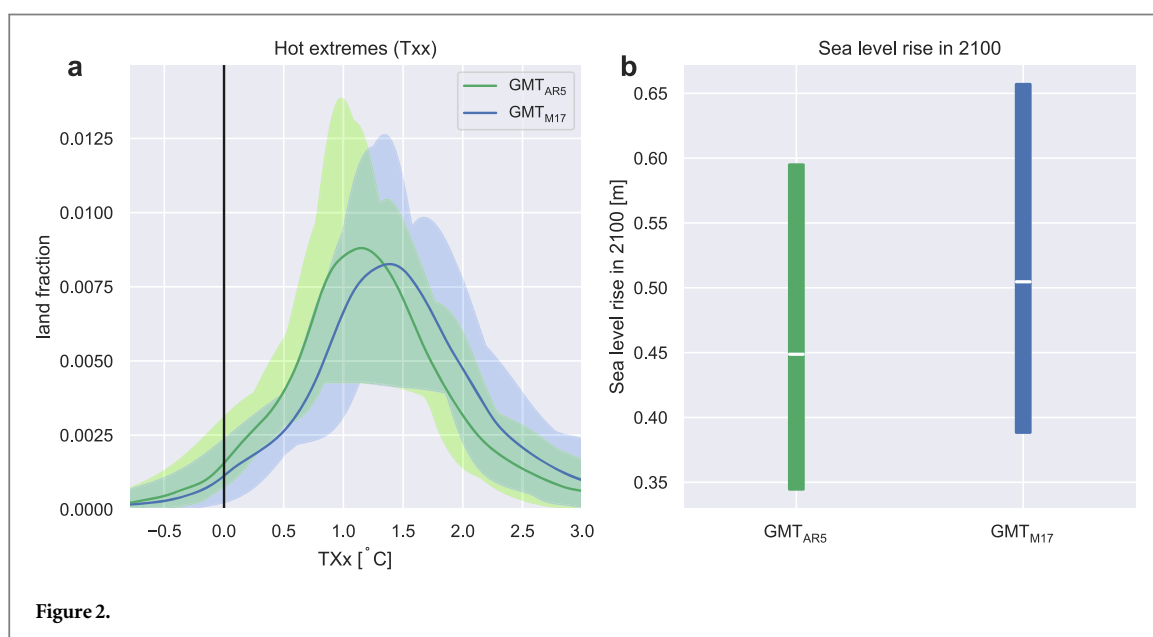
E-mail: [peter.pfleiderer@climateanalytics.org](mailto:peter.pfleiderer@climateanalytics.org)

## Updated results for hot extremes

The computation of the land-fraction affected by daily temperature extremes (TXx) erroneously also included ocean cells. To resolve this error, the data

at 1.5 °C GMT<sub>AR5</sub> warming only 62% of the land area would experience this increase.<sup>7</sup>

Absolute changes in TXx are not core to the argument presented in the paper, and the discussion section thus needs no update.



underlying figure 2(a) was recomputed, leading to higher changes in TXx. In the results section the sentence describing the figure should thus read:

‘At 1.68 °C GMT<sub>AR5</sub> warming, 74% of the land area experiences an increase in the annual maximum daily temperature of 1 °C relative to 1986–2005, while

## ORCID iDs

Peter Pfleiderer <https://orcid.org/0000-0002-1493-4598>Joeri Rogelj <https://orcid.org/0000-0003-2056-9061>