

Balancing clean water-climate change mitigation trade-offs

Simon Parkinson^{a,b,*}, Volker Krey^{a,c}, Daniel Huppmann^a, Taher Kahil^a, David McCollum^{a,d}, Oliver Fricko^a, Edward Byers^a, Matthew Gidden^a, Beatriz Mayor^a, Zarrar Khan^{a,e}, Catherine Raptis^f, Narasimha D. Rao^a, Nils Johnson^a, Yoshihide Wada^{a,g}, Ned Djilali^b, Keywan Riahi^{a,h,i}

^aInternational Institute for Applied Systems Analysis, Schlossplatz 1, A-2361 Laxenburg, Austria

^bUniversity of Victoria, PO Box 3055 STN CSC, V8W 3P6 Victoria BC, Canada

^cNorwegian University of Science and Technology, NO-7491, Trondheim, Norway

^dUniversity of Tennessee, 1640 Cumberland Avenue, 37996-3340 Knoxville TN, United States

^eUniversidad Pontificia Comillas, Calle de Santa Cruz de Marcenado 26, 28015 Madrid, Spain

^fETH Zurich, John-von-Neumann-Weg 9, 8093 Zurich, Switzerland

^gUtrecht University, PO Box 80.115, 3508 Utrecht, The Netherlands

^hTU Graz, Inffeldgasse 21, 8010 Graz, Austria

ⁱColorado School of Mines, 1500 Illinois Street, Golden, CO 80401, United States

Abstract

Energy systems support technical solutions fulfilling the United Nations' Sustainable Development Goal for clean water and sanitation (SDG6), with implications for future energy demands and greenhouse gas emissions. The energy sector is also a large consumer of water, making water efficiency targets ingrained in SDG6 important constraints for long-term energy planning. Here, we apply a global integrated assessment model to quantify the cost and characteristics of infrastructure pathways balancing SDG6 targets for water access, scarcity, treatment and efficiency with long-term energy transformations limiting climate warming to 1.5 °C. Under a mid-range human development scenario, we find that approximately 1 trillion USD₂₀₁₀ per year is required to close water infrastructure gaps and operate water systems consistent with achieving SDG6 goals by 2030. Adding a 1.5 °C climate policy constraint increases these costs by up to 8 %. In the reverse direction, when the SDG6 targets are added on top of the 1.5 °C policy constraint, the cost to transform and operate energy systems increases 2 to 9 % relative to a baseline 1.5 °C scenario that does not achieve the SDG6 targets by 2030. Cost increases in the SDG6 pathways are due to expanded use of energy-intensive water treatment and costs associated with water conservation measures in power generation, municipal, manufacturing and agricultural sectors. Combined global spending (capital and operational expenditures) in the integrated SDG6-1.5 °C scenarios to 2030 on water and energy systems increases 92 to 125 % relative to a baseline scenario without 1.5 °C and SDG6 constraints. Evaluation of the multi-sectoral policies underscores the importance of water conservation and integrated water-energy planning for avoiding costs from interacting water, energy and climate goals.

*Corresponding author. *Email address:* parkinso@iiasa.ac.at

1. Introduction

Achieving the objectives outlined in the United Nations' Sustainable Development Goals (SDGs) is estimated to require annual incremental spending of 1.5 to 2.5 % of global GDP [1]. For policy-makers, the technologies and processes supplying energy and water services are of concern because the SDGs target clean water and energy for all, while 2.1 billion people still lack access to an improved water source and 1.1 billion lack access to electricity [2, 3]. Moreover, achieving the other SDGs, such as those related to health, ecosystems, and poverty, will be contingent on meeting water and energy sustainability objectives [4, 5]. At the same time, water and energy systems are closely interlinked: water plays a key role in all stages of energy supply (e.g., fuel processing and power plant operations) [6], and conversely a significant amount of energy is required to pump and treat water resources [7]. Identifying long-term infrastructure strategies that effectively balance water, energy and human development objectives in an integrated manner can assist in achieving the SDGs [8, 9].

Concurrent to the SDG agenda is the UN Framework Convention on Climate Change's (UNFCCC) landmark Paris Agreement, which has the overarching objective of limiting 21st century global mean temperature change from pre-industrial levels to well below 2 °C while pursuing efforts to limit the temperature increase to 1.5 °C. Climate action is included as an SDG (SDG13), and avoiding climate change impacts is consistent with a number of the other SDGs [10]. However, there exist potential trade-offs between deployment of certain climate change mitigation measures and solutions consistent with the SDG6 (clean water and sanitation) agenda. Specifically, wastewater treatment capacity will need to expand rapidly in many developing regions in order to provide coverage aligned with the SDG6 targets, and the associated energy footprint could place strain on regional energy systems and climate change mitigation plans [11]. Moreover, the SDG6 water scarcity and efficiency targets can create incentive to use energy-intensive wastewater recycling and desalination technologies as solutions to reduce withdrawals from conventional surface and groundwater resources [12]. At the same time implementation of bioenergy, concentrating solar, nuclear or carbon capture and storage (CCS) technologies as climate change mitigation solutions may lead to increased water use if the processes are not designed for water efficiency [13–15].

Despite widespread water-energy linkages and a breadth of knowledge on how to achieve the climate and clean water targets in isolation, there is a lack of global-scale multi-sectoral analysis quantifying the relative impacts of achieving SDG6 targets on the cost and characteristics of energy pathways consistent with the Paris Agreement [16]. Previous work provides important context but focused mainly on water-

1
2 50 constrained national energy or land-use strategies [13, 17–19]. Previous analysis of global and regional
3
4 51 development pathways incorporating multiple sustainability perspectives did not assess water access and
5
6 52 treatment costs or interactions between SDG6 and climate change mitigation policies [6, 20–25]. The
7
8 53 lack of consistent policy treatment across water and energy systems at the global-scale limits our under-
9
10 54 standing of the investments needed to achieve the SDGs.

11 55 Here, we assess integrated water-energy systems transformation to begin to unravel the costs and
12
13 56 characteristics of global pathways consistent with both the Paris Agreement and SDG6 objectives. The
14
15 57 MESSAGEix-GLOBIOM integrated assessment model (IAM), used previously to develop globally com-
16
17 58 prehensive energy pathways consistent with deep decarbonization [26], is enhanced in this work to in-
18
19 59 clude a reduced-form, regionally-specific representation of the global water sector. The new approach
20
21 60 represents an improvement in IAM analysis because it accounts for future shifts in global water use
22
23 61 patterns driven by a combination of socioeconomic changes and SDGs, and links these projections and
24
25 62 policies to water availability, and the cost, energy and emissions impacts of future infrastructure systems.
26
27 63 The coupling of water and energy policy modeling at the global-scale supports prospective analysis of
28
29 64 the investment burden from multiple targets occurring over different sectors, timeframes and geographic
30
31 65 scales. The results highlight the important role of IAMs in finding low-cost global pathways consistent
32
33 66 with multiple SDG objectives.

34 67 **2. Methods**

35
36
37 68 The technical implementation of the IAM and the water sector enhancements is detailed in the Supple-
38
39 69 mentary Information (sections S1.1 to S1.3), with salient features of the methods used to evaluate multi-
40
41 70 sectoral water and climate policies summarized here. The scenario for population, economic growth and
42
43 71 other key drivers is constructed from an existing IAM representation of the middle-of-the-road Shared
44
45 72 Socioeconomic Pathway (i.e., SSP2) [26–28]. The Paris Agreement and SDG6 policies are included in
46
47 73 the IAM as additional constraints, and force the IAM to identify feasible least-cost implementation sce-
48
49 74 narios for the 21st century in 11 geographic regions. The countries included in each region are listed in
50
51 75 the Supplementary Information (Table S1 and Figure S1).

52
53 76 The 1.5 °C climate policy is implemented as a constraint on cumulative emissions over the 21st
54
55 77 century across energy and land systems. Consistent emission budgets and pathways are derived from
56
57 78 previous climate model simulations [26]. Figure 1 outlines the water-related constraints used to repre-
58
59 79 sent the SDG6 policies. The analysis does not cover all of the targets associated with SDG6, including
60

those for flood management and transboundary cooperation. Two unique pathways consistent with the SDG6 narrative bridge uncertainties driven by future end-use behavior and technological development. A supply-oriented pathway (SDG6-Supply) combines the SDG6 policy implementation with business-as-usual (baseline) water use projections. The scenario primarily features expansion of supply-side technologies in response to mitigating future demand growth. An efficiency-oriented pathway (SDG6-Efficiency) features a transition towards a future where significant progress is made on the demand-side in terms of reaching sustainable water consumption behaviour across all sectors. A key feature is the inclusion of irrigation conservation as an approach to meet water targets through re-allocation of saved water to other sectors.

| Constraint category | Water Sector Development Scenario | | |
|------------------------------|--|--|--|
| | Baseline | SDG6-Supply | SDG6-Efficiency |
| Water infrastructure access | 1. Piped water and treatment access proceeds according to the baseline SSP2 socioeconomic projections | <ol style="list-style-type: none"> SDG 6.1/6.2 By 2030 100% municipal withdrawals from piped water infrastructure SDG 6.2 By 2030 100% municipal return flows collected SDG 6.3/6.6 By 2030 50% of return flows treated | <ol style="list-style-type: none"> SDG 6.1/6.2 By 2030 100% municipal withdrawals from piped water infrastructure SDG 6.2 By 2030 100% municipal return flows collected SDG 6.3/6.6 By 2030 50% of return flows treated |
| Water demand | 1. Baseline SSP2 per capita water withdrawals and return flows | <ol style="list-style-type: none"> Baseline SSP2 per capita water withdrawals and return flows SDG 6.1 By 2030 Urban domestic withdrawals exceed 100 liters per day and rural domestic withdrawals exceed 50 liters per day | <ol style="list-style-type: none"> SDG 6.4/6.6 Baseline SSP2 per capita water withdrawals and return flows + 10% end-use efficiency improvement due to behavior change SDG 6.1 By 2030 urban domestic withdrawals exceed 100 liters per day and rural domestic withdrawals exceed 50 liters per day |
| Water allocation | 1. No change to allocation schemes | <ol style="list-style-type: none"> SDG 6.4/6.6 By 2030 20 % less withdrawals from rivers and aquifers relative to 2010 SDG 6.4/6.6 By 2030 minimum 5% reduction in energy sector water consumption relative to BAU | <ol style="list-style-type: none"> SDG 6.4/6.6 Up to 30% of irrigation withdrawals can be efficiently re-allocated to other sectors. SDG 6.4/6.6 By 2030 30 % less withdrawals from rivers and aquifers relative to 2010 SDG 6.4/6.6 By 2030 minimum 10% reduction in energy sector water consumption relative to BAU |
| Water technology development | <ol style="list-style-type: none"> Expansion of advanced recycling and desalination in water stressed regions at historical rates Phase out of freshwater once-through systems Energy intensive water supply technologies | <ol style="list-style-type: none"> Energy intensive water supply technologies SDG 6.4 Rapid expansion of desalination and wastewater recycling in water stressed regions SDG 6.4/6.6 No once-through power plant cooling systems (freshwater or seawater) | <ol style="list-style-type: none"> Energy efficient water supply technologies SDG 6.4 Rapid expansion of desalination and wastewater recycling in water stressed regions SDG 6.4/6.6 Increased end-use recycling by 2030 (10% reduction in consumption). SDG 6.4/6.6 No once-through power plant cooling systems (freshwater or seawater) |

Figure 1: The water sector development scenarios and parameterized water constraints for the analysis. Constraints specific to SDG6 are indicated in bold.

The SDG6 water access and quality targets (6.1-6.3) are integrated into the IAM by constraining the required capacity of water infrastructure systems. The SDG6 pathways feature a transition in 2030 to universal piped water access and wastewater collection and towards wastewater treatment capacity able to treat a minimum of half all return flows. Increasing the fraction of wastewater that is treated also protects water-related ecosystems and is consistent with SDG6 target 6.6. Access rates are projected in the baseline scenario by combining the SSP2 income projections with a logistics model fit to historical

1
2 95 national-data (Supplementary Information, Figure S6) [29, 30].
3

4 96 It is important to emphasize the parameterized constraints represent our interpretation of the SDG6
5
6 97 targets, and that the interpretation could be implemented differently by other analysts. Representing the
7
8 98 diversity of possible outcomes remains a common challenge for global IAMs, and future research might
9
10 99 address the uncertainty by eliciting and analyzing additional scenarios developed by multiple modeling
11
12 100 teams (e.g., [31]).

13 101 In total, 3.5 billion more people require access to piped water infrastructure and wastewater collection
14
15 102 by 2030 and 1.8 billion more people require access to wastewater treatment under the SDG6 pathway rel-
16
17 103 ative to the baseline scenario (Figure 2a). This outcome stems from the projected income-levels in 2030
18
19 104 under the baseline SSP2 narrative, and the associated future water source and treatment access rates de-
20
21 105 rived from the income-based logistics model (Supplementary Information, Figure S6). Namely, in many
22
23 106 low-income regions the baseline SSP2 projections do not achieve levels of water access and treatment
24
25 107 consistent with the SDG6 targets. Some regions (e.g., Indus Basin) face multiple challenges in meet-
26
27 108 ing the SDG6 objectives because of extreme existing water stress combined with a wide infrastructure
28
29 109 gap projected for 2030 (Figure 2c). It will be difficult for these regions to expand freshwater supply in
30
31 110 the domestic sector without reducing demands elsewhere because of a lack of surface and groundwater
32
33 111 resources.

34 112 Consistent water withdrawal and return flow trajectories for the SSP2 scenario are generated to rep-
35
36 113 resent demands in the irrigation, municipal (domestic) and manufacturing sectors (Supplementary Infor-
37
38 114 mation, Section 1.3). To reflect transformation towards universal access to sufficient water for human
39
40 115 development, municipal water withdrawals in all countries in the SDG6 pathways are adjusted such that
41
42 116 all urban areas achieve per capita demands of at least 100 liters per day while rural areas achieve demands
43
44 117 of at least 50 liters per day (Supplementary Information, Figure S7) [34–36]. Costs for water distribution
45
46 118 and wastewater collection in the municipal and manufacturing sectors are estimated based on average
47
48 119 cost data compiled by the World Health Organization [37], combined with the modeled withdrawal and
49
50 120 return-flow volumes (Supplementary Information, Section S1.3). This approach aligns closely with pre-
51
52 121 vious work that quantified costs to achieve universal access to clean water and sanitation [37–39], but
53
54 122 also smooths out some of the known cost variability for distribution systems under diverse topographic
55
56 123 conditions [40], and thus results do not provide detailed cost-level information at the municipal- or city-
57
58 124 scale.

59
60 125 Expansion pathways for advanced water treatment (i.e., wastewater recycling and desalination) are

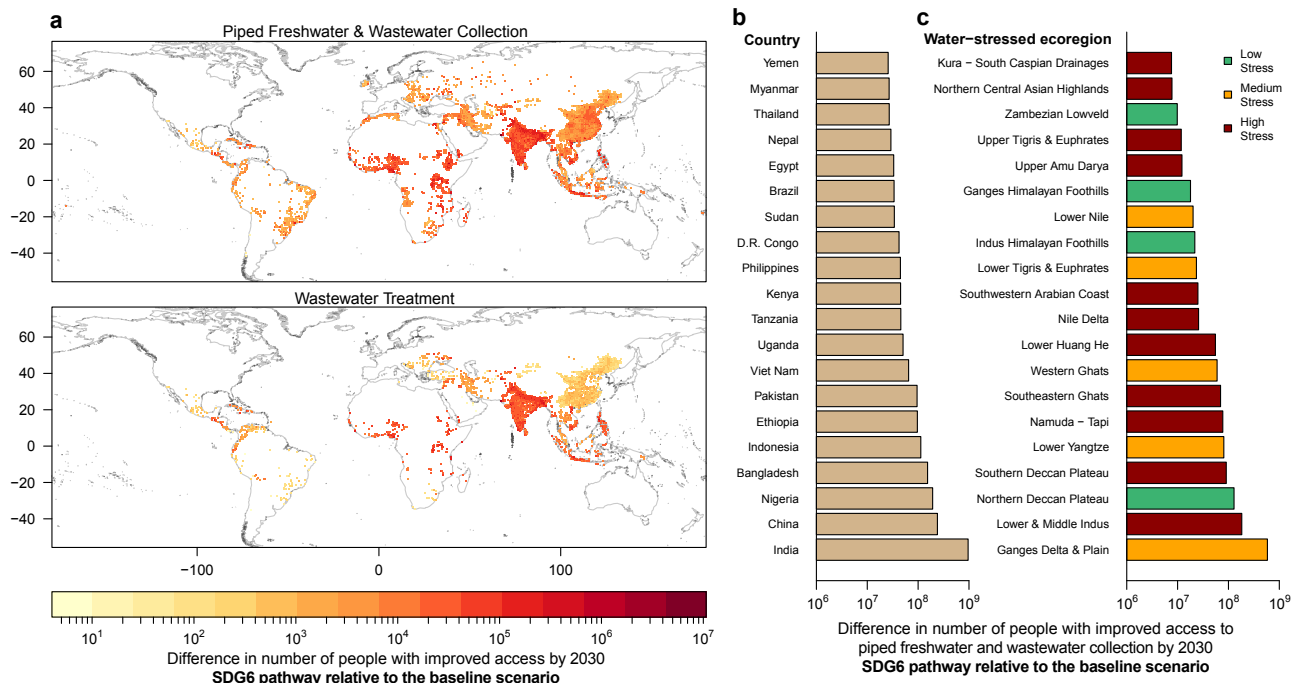


Figure 2: Comparison between projected piped water access and wastewater treatment rates under the SDG6 and baseline water policy scenarios a. Spatially-explicit (7.5 arc-minutes) differences between projected piped water access and water treatment levels in the SDG6 scenario relative to the baseline scenario; b. differences in population with piped water access and wastewater collection aggregated by country [32]; and c. differences categorized by the water-stressed ecological regions defined in Hoekstra et al. (2010) [33] (Supplementary Information, Figure S5).

incorporated into the water sector transformations to supply increasing future urban withdrawals in water stressed regions [12, 41, 42], which is in line with SDG6 target 6.4 (substantially reduce the number of people suffering from water scarcity). Diffusion is limited based on two criteria: i) the historical 5-year maximum regional growth rate calculated using an asset-level global desalination database [41]; and ii) a logistics model that limits expansion in low-income regions (Supplementary Information, Section S1.3). Wastewater recycling is prioritized over seawater desalination to reflect additional environmental challenges typically associated with desalination (e.g., brine production, marine thermal pollution, etc.). A maximum recycling rate of 80 % of the urban return flow is assumed to reflect difficulties in capturing and recycling all wastewater to potable standards [43]. Wastewater recycling can also take various forms, including direct application of domestic wastewater for uses that do not require potable quality [43]. To assess impacts on the results we incorporate a transition towards low-cost, energy-efficient recycling systems in the SDG6-Efficiency scenario using performance data identified in the literature (Supplementary Information, Table S3) [44, 45].

We define conservation cost curves for additional end-use water conservation measures in the municipal, manufacturing and agricultural sectors. Significant diversity in conservation measures exists across

1
2 141 regions, and a full assessment of the opportunities and implementation costs is beyond the scope of this
3
4 142 paper. We alternatively applied a stylized approach to include expected conservation costs and impacts
5
6 143 at the regional-scale. Previous work quantified the impact of various conservation options and associated
7
8 144 implementation costs, and generally show that conservation costs increase non-linearly and offset a lim-
9
10 145 ited fraction of water demand [46–49]. We assume a general form for the conservation curve that enables
11
12 146 consistent linearization across regions (Supplementary Information, Figure S8). A maximum conser-
13
14 147 vation potential in each sector representing 30 % of the baseline withdrawals is assumed in this paper,
15
16 148 and is a somewhat conservative interpretation of previous assessments that focus specifically on water
17
18 149 conservation potentials for specific sectors [46, 47, 49, 50]. We use 0.3 USD¹ per m³ to represent the
19
20 150 average cost for conservation measures because this approximates the point at which it can be expected
21
22 151 that investment switches to expanding yield from conventional raw surface and groundwater sources [51].

23
24 152 Water efficiency measures aligned with SDG6 target 6.4 are also embedded into the SDG6 energy
25
26 153 transformation pathways. Energy sector water consumption post-2030 is limited to a fixed percentage
27
28 154 of the estimated freshwater consumption in the baseline scenario without climate policy (5 % less in the
29
30 155 SDG6-Supply scenario and 10 % less in the SDG6-Efficiency scenario). This pushes the energy sector
31
32 156 in each region to improve water consumption intensity through transformational changes in the energy
33
34 157 supply-chain. Furthermore, once-through cooling systems are phased-out completely in the SDG6 sce-
35
36 158 narios to avoid thermal water pollution [52], helping to protect water-related ecosystems in line with
37
38 159 SDG6 target 6.6. The baseline scenario also maintains trends away from freshwater once-through systems
39
40 160 and towards recirculating (closed-loop) systems [53, 54], but does not feature a specific consumption
41
42 161 reduction target or constraints on seawater once-through systems. The manufacturing sector is also as-
43
44 162 summed to implement water conservation measures more aggressively in the SDG6-Efficiency pathways,
45
46 163 achieving lower average national water intensities than in the SDG6-Supply pathways. The withdrawal
47
48 164 and return flow trajectories for each region including the impacts of conservation are presented in the
49
50 165 Supplementary Information (Figures S8-S12).

51 166 **3. Results**

52 167 *3.1. Integrated solution pathways*

53 168 Select global indicator pathways calculated with the enhanced IAM under the water and climate policy
54
55 169 scenarios are depicted in Figure 3. In both SDG6 scenarios, global freshwater withdrawals from rivers

57
58 ¹All costs are reported in 2010 US Dollars (USD2010) to ensure consistency of the input data sources.
59
60

1
2 170 and aquifers and untreated return flows decrease relative to the estimated 2010 volumes (Figure 3a). In
3
4 171 the SDG6-Efficiency scenario, 26 % less freshwater is withdrawn from rivers and aquifers and 43 %
5
6 172 less wastewater is returned to the environment untreated by 2030 relative to volumes estimated for 2010.
7
8 173 These savings could improve environmental flows while reducing water pollution.

9 174 To avoid freshwater withdrawals from conventional surface and groundwater resources while increas-
10
11 175 ing the fraction of wastewater that is treated, an upscaling of efficiency, alternative freshwater sources
12
13 176 and wastewater treatment capacity is required. In the SDG6-Supply scenario, global desalination capac-
14
15 177 ity increases from 24 km³ in 2010 to 250 km³ in 2070. At the same time, advanced wastewater recycling
16
17 178 capacity expands from an estimated 16 km³ in 2010 to 720 km³ in 2070. The expansion occurs mainly
18
19 179 in the Middle East / North Africa and South Asia regions (Supplementary Information, Figure S18-S19)
20
21 180 where extreme water stress is combined with rapidly growing urban populations. Global water sector
22
23 181 electricity consumption (Figure 3d) increases from 820 TWh per year in 2010 (4 % of global demand) to
24
25 182 more than 2000 TWh per year by 2070 (3 to 6 % of global demand), reflecting growing water consump-
26
27 183 tion and the expanded use of advanced water treatment. In contrast, electricity consumption for water
28
29 184 supply decreases in the SDG6-Efficiency scenario due to lower water demands and higher energy effi-
30
31 185 ciencies assumed for the water technologies. Water efficiency investments reduce withdrawals across all
32
33 186 sectors by approximately 30 %, resulting in reduced expansion of advanced water treatment (desalination
34
35 187 capacity reaches 70 km³ in 2070 while recycling reaches 190 km³).

36 188 Global carbon emissions in 2030 (Figure 3c) do not vary significantly across scenarios (<2 %) in-
37
38 189 dicating minimal interactions between the emission pathway and the ramp-up in energy-intensive water
39
40 190 infrastructure systems to meet the SDG timeline. Emissions in the 1.5 °C scenarios reduce rapidly and are
41
42 191 negative in 2070 due to a combination of land-based mitigation measures and carbon capture technolo-
43
44 192 gies. Global energy sector water consumption (Figure 3e) is at the same time increasing in all scenarios.
45
46 193 Post-2030 the baseline 1.5 °C energy transformation pathway requires more water than when no cli-
47
48 194 mate policy is included for two reasons: 1) there are higher electricity demands from increasing end-use
49
50 195 electrification; and 2) certain low-carbon power generation options (e.g., nuclear) have a larger water
51
52 196 footprint than conventional combined-cycle natural gas systems prevalent in transformations under no
53
54 197 climate policy [6]. The SDG6 scenarios feature additional water efficiency targets that achieve net reduc-
55
56 198 tions compared to estimated 2010 levels (5 % in SDG6-Supply and 10 % in SDG6-Efficiency), but the
57
58 199 conserved water volumes are negligible when considered in the broader context of the regional volumes
59
60 200 supporting irrigation, municipal and industrial sectors (Figure 3a).

1
2
3
4
5
6
7
8
9
10
11
12
13
14
15
16
17
18
19
20
21
22
23
24
25
26
27
28
29
30
31
32
33
34
35
36
37
38
39
40
41
42
43
44
45
46
47
48
49
50
51
52
53
54
55
56
57
58
59
60

Infrastructure Transformation Pathway

■ Baseline ■ SDG6-Supply ■ SDG6-Efficiency
 1.5C SDG6-Supply-1.5C SDG6-Efficiency-1.5C - - - Estimated for 2010

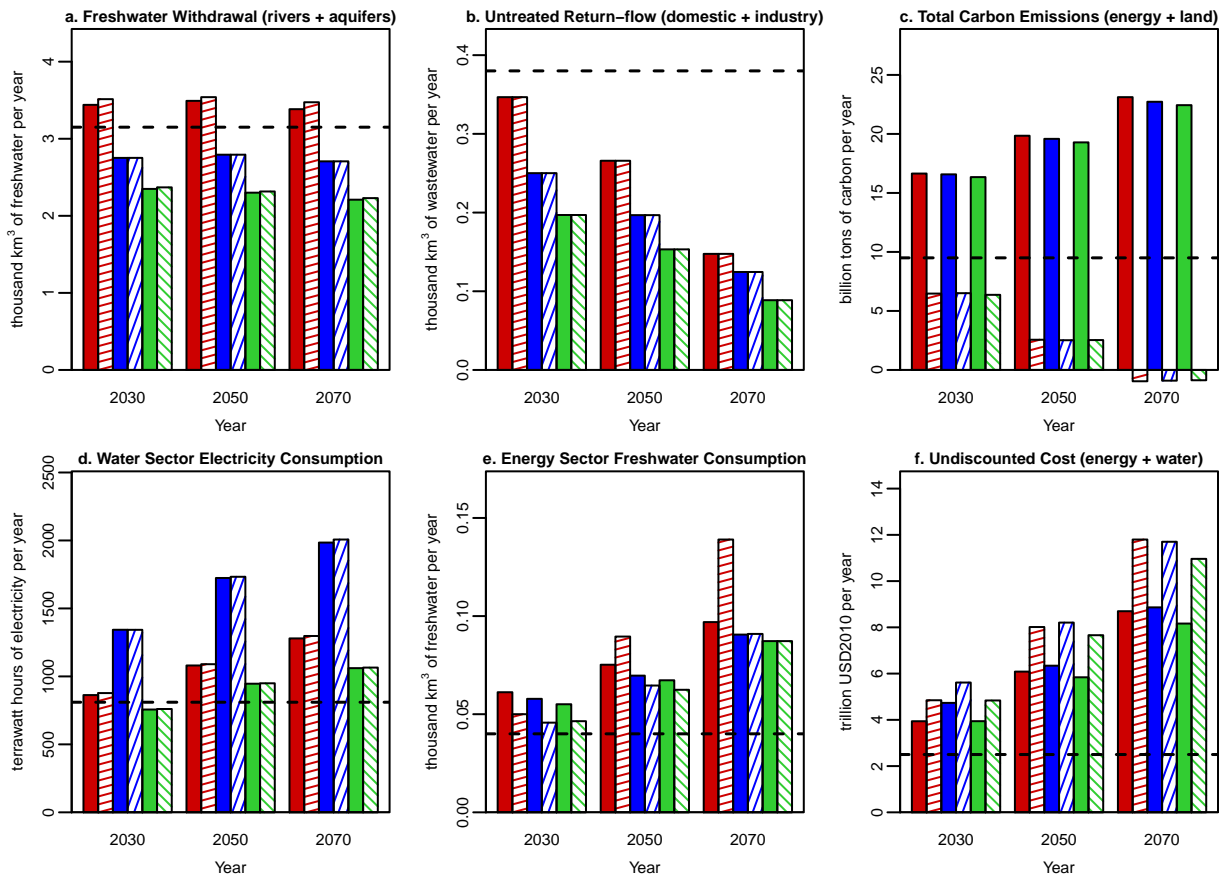


Figure 3: Impacts of combined water and climate policies on select global indicator pathways (2010 to 2070): a. Freshwater withdrawals from rivers and aquifers across irrigation, municipal and industrial sectors; b. Untreated return-flows from the municipal and industrial sectors; c. Total carbon emissions across energy and land systems; d. Water sector energy consumption (electricity); e. Energy sector water consumption (excluding hydropower); and f. Undiscounted costs calculated across water and energy systems (sum of the investment, fixed and variable cost components).

3.2. Impact on system costs

The undiscounted total costs representing the sum of the investment (capital) and operational expenditures for water and energy systems (Figure 3f) indicate in order to achieve the clean water targets by 2030 while placing infrastructure on a path consistent with 1.5 °C that annual spending needs to be increased 92 to 125 % relative to the baseline scenario. Comparing results across scenarios further indicates that to 2030, similar effort is needed to move towards pathways consistent with SDG6 as with 1.5 °C, but that in the long-term, spending to achieve 1.5 °C dominate. Regional cost results interpreted on a per capita basis (Table 1) are 100 to 300 USD per year. Per capita costs are largest in high-income economies because these regions consume most on a per capita basis. Regional results further demonstrate that the costs associated with achieving both climate and clean water targets range between 0.8 and 2.5 % of regional GDP, with higher fractions occurring in developing regions. The sustainable consumption narrative embedded in the SDG6-Efficiency scenario results in the long-term costs decreasing relative to the other scenarios tested (Figure 3f), and this is due to avoided spending on supply infrastructure. It is important to emphasize that broader impacts of the SDG6-Efficiency narrative on e.g., production costs in the agriculture and manufacturing sectors are not accounted for in the presented cost estimates, which would impact the anticipated benefits of water conservation.

| Region | Total cost [billion USD2010 per year] | | | Cost per capita [USD2010 per year] | | | Percent GDP [%] | | |
|---------|---|-------------|-------------|--------------------------------------|-------------|-------------|-------------------|-------------|-------------|
| | Baseline | SDG6-1.5C-S | SDG6-1.5C-E | Baseline | SDG6-1.5C-S | SDG6-1.5C-E | Baseline | SDG6-1.5C-S | SDG6-1.5C-E |
| Asia | 450 | 660 | 650 | 110 | 160 | 150 | 0.9 | 1.4 | 1.4 |
| LAM | 80 | 170 | 130 | 120 | 250 | 200 | 0.8 | 1.7 | 1.3 |
| Africa+ | 180 | 270 | 220 | 110 | 160 | 130 | 1.6 | 2.5 | 2.0 |
| OECD+ | 290 | 460 | 380 | 200 | 310 | 260 | 0.6 | 1.0 | 0.8 |

Table 1: Regional costs (investment plus operational) for the baseline and integrated policy scenarios. SDG6-1.5C-S represents the scenario combining the SDG6-Supply policies with the 1.5 °C emissions constraint. SDG6-1.5C-E represents the scenario combining the SDG6-Efficiency policies with the 1.5 °C emissions constraint. The presented indicators are computed as annual averages over the 2020 and 2030 model decision-making periods. Africa+ includes the countries within Sub-Saharan Africa, the Middle East and North Africa. OECD+ includes countries in North America and Western Europe, as well as countries in Eastern Europe and including Russia. LAM includes countries in Latin America. A full list of the countries considered in each region is provided in the Supplementary Information (Table S1).

Analysis of the investment portfolios (expenditures on new infrastructure capacity) by 2030 indicates re-allocation of financing away from fossil fuels and conventional freshwater supply systems combined with a massive ramp-up in investment in efficiency and clean supply projects across water and energy systems supports the multi-sectoral policy objectives (Figure 4). In SDG6-1.5C scenarios, by 2030 on average more than 170 billion USD per year is disinvested in fossil fuel activities relative to the baseline scenario and used to partially fund the 910 billion USD per year in increased spending on efficiency and

low-carbon resources. Compared to the 1.5 °C scenario without SDG6 targets, there is increased use of wind and solar to reduce the capacity of thermal power generation and associated water requirements (Supplementary Information, Figure S20 and S21). In the water sector, average investments into conventional surface and groundwater systems including large-scale dams is reduced by 60 billion USD per year relative to the baseline scenario. At the same time incremental investment into piped water access and water treatment reaches 260 billion USD per year, closing the infrastructure gaps projected under baseline conditions (Figure 2).

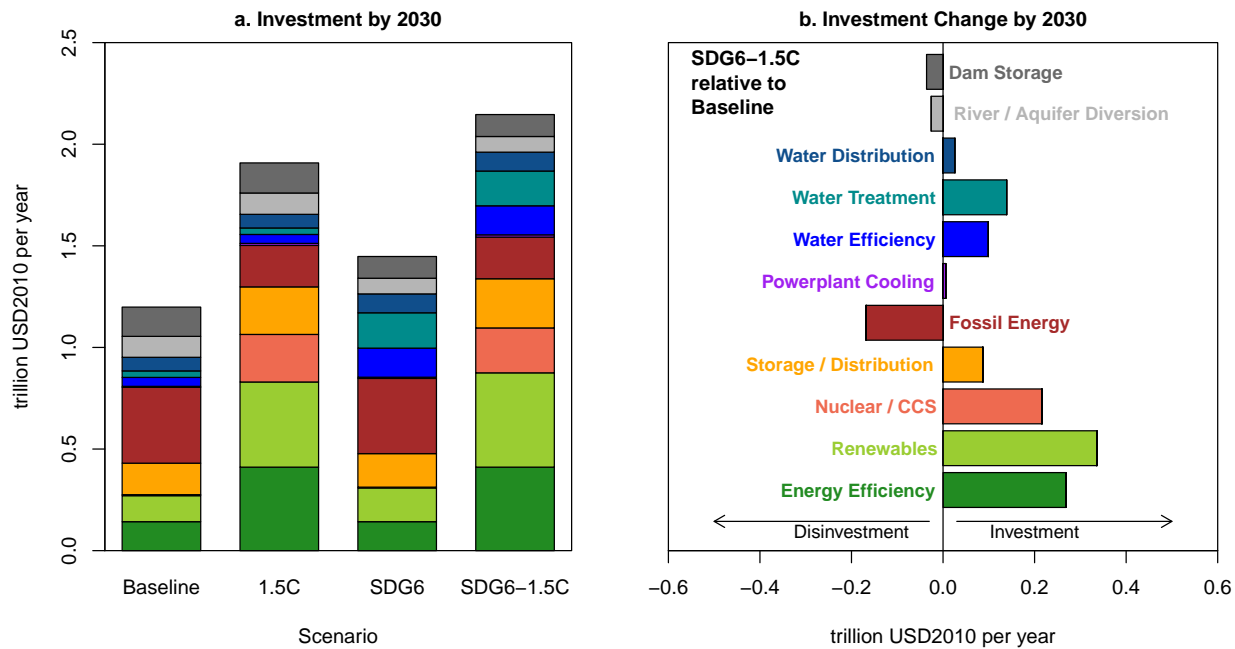


Figure 4: Global investment and investment change portfolios for achieving the SDG6 policies by 2030 while placing energy systems on a path consistent with 1.5 °C. Depicted costs for scenarios including SDG6 are averages across SDG6-Supply and SDG6-Efficiency. Dam storage represents large-scale reservoir systems used for surface water storage. River / aquifer diversion represents extractions of freshwater from surface and groundwater resources. Water distribution includes piped water supply and wastewater collection. Water treatment includes both conventional and advanced (recycling and desalination) technologies. Water efficiency measures cover irrigation, urban, rural and manufacturing sectors. Power plant cooling includes once-through (fresh and ocean water), closed-loop and air cooling technologies. Fossil energy represents all technologies that extract and convert fossil energy resources. Storage / Distribution technologies include energy grids and liquid fuel storage. Renewables includes wind, solar, geothermal and bioenergy technologies. Energy efficiency measures cover the industrial, building and transport sectors.

Incremental water sector investment needs and are found to be greatest in Asia and Africa (Figure 5a) because these regions face a combination of rapidly growing demands and existing water stress in certain basins. Relatively little incremental water sector investment needs are projected for developed economies (North America and Europe) because these countries already have high access and treatment rates exceeding the SDG6 targets. Incremental investments in these regions are supporting efficiency and

1
2 235 advanced water treatment, which are helping to reduce projected withdrawals from rivers and aquifers in
3
4 236 water stressed regions. Incremental energy investment needs to achieve 1.5 °C exceed water investment
5
6 237 needs for the SDG6 targets in each of the aggregated macro-regions, but these trends may differ when
7
8 238 assessed at higher spatial resolutions.

9
10 239 A comprehensive analysis of the energy investments to achieve the Paris Agreement and associated
11
12 240 uncertainties are detailed in McCollum et al. (2018) [55]. In this paper, we find that energy sector in-
13
14 241 vestments in 2030 increase by an estimated 35 billion USD per year when the SDG6 policies are added
15
16 242 on top of the 1.5 °C climate policy (Figure 5b). The incremental investments are supporting increased
17
18 243 electricity generation capacity needed to supply water sector demands and for implementation of water-
19
20 244 efficient power plant cooling technologies. Conversely, investments supporting the SDG6 policies display
21
22 245 much less sensitivity when the 1.5 °C climate policy is added (Figure 5b) because the SDG6 policies are
23
24 246 constraining water infrastructure coverage and thus driving the observed investment levels across scenar-
25
26 247 ios. Disinvestments in the water sector found when comparing the SDG6 scenarios with and without the
27
28 248 1.5 °C target (Figure 5b) are attributed to reduced capacity of river/aquifer diversions and dam storage
29
30 249 upstream from the energy sector. Specifically, when the 1.5 °C target is added, the energy system must
31
32 250 transform rapidly, and to avoid exceeding the embedded water efficiency targets later in the time horizon
33
34 251 and the prospect of stranded assets, the integrated SDG6-1.5C pathways feature accelerated transforma-
35
36 252 tion towards water-efficient energy technologies, and this results in lower energy sector water withdrawals
37
38 253 in the near term and the avoided water sector investment costs observed in Figure 5b.

36 254 Despite limited impacts to water sector investments, the increasing energy supply costs under a 1.5
37
38 255 °C policy are translated to water infrastructure systems according to their energy consumption intensity,
39
40 256 which is increasing in the SDG6 pathways in many regions due to expanded water treatment. Figure 6a
41
42 257 depicts estimated future operational electricity costs in the water sector across scenarios, and indicates
43
44 258 that combining the 1.5 °C policy with the SDG6-Supply scenario results in annual spending on electricity
45
46 259 reaching 110 billion USD in 2030 and growing further to 160 billion USD in 2070. Conversely, spending
47
48 260 on electricity in the water sector remains relatively steady in the SDG6-Efficiency scenario, reaching a
49
50 261 much lower global expenditure of 110 billion USD per year by 2070. We find a similar scale of spending
51
52 262 (investment and operational costs) will be needed to simultaneously transition power systems towards
53
54 263 more water efficient cooling technologies (Figure 5b), which are more expensive and less energy-efficient
55
56 264 than conventional options and becoming increasingly expensive to operate under decarbonization.

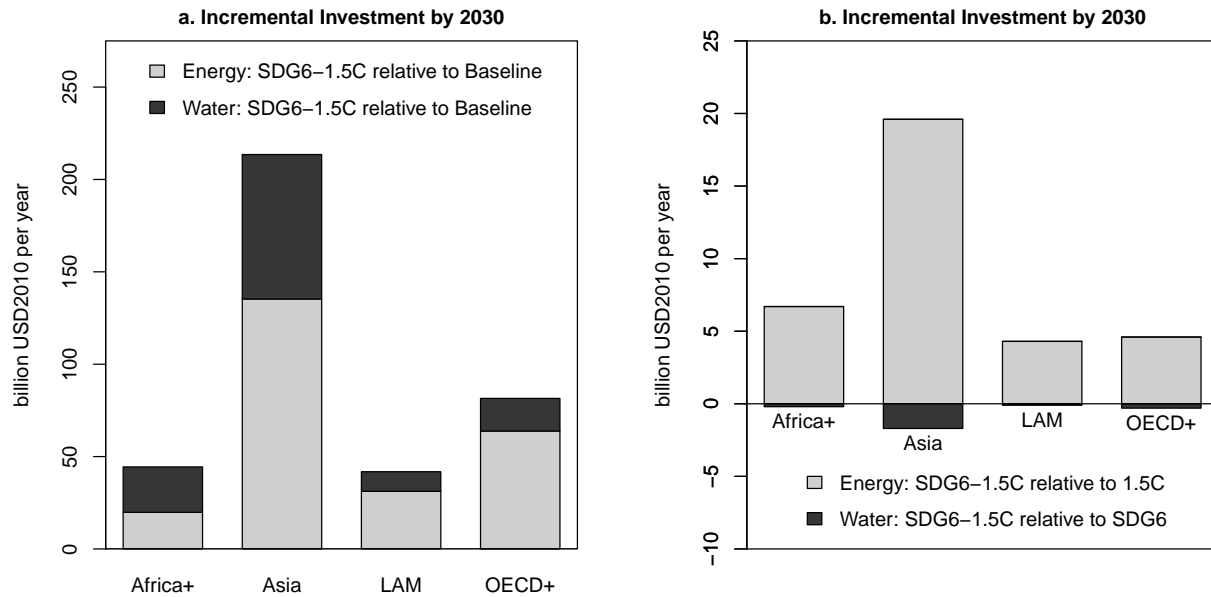


Figure 5: Incremental water and energy investment costs by 2030 across global regions: a. SDG6-1.5C relative to Baseline; and b. SDG6-1.5C relative to 1.5C for energy investments and SDG6-1.5C relative to SDG6 for water investments. Depicted costs for scenarios including SDG6 are averages across SDG6-Supply and SDG6-Efficiency. Africa+ includes the countries within Sub-Saharan Africa, the Middle East and North Africa. OECD+ includes countries in North America and Western Europe, as well as countries in Eastern Europe and including Russia. LAM includes countries in Latin America. A full list of the countries considered in each region is provided in the Supplementary Information (Table S1).

4. Discussion

The results demonstrate that balancing trade-offs between climate change mitigation and clean water policies requires a global shift in investment and operational decision-making across sectors that is best delivered through targeted policies developed from an integrated water-energy perspective. We find that implementation of the SDG6 targets for water access and wastewater treatment cause relatively minor impacts to the energy sector when compared to the effort needed for climate change mitigation. Conversely, water efficiency targets aligned with SDG6 applied to the energy sector cause changes to the long-term energy technology strategy used to mitigate climate change. Specifically, there is increased exploitation of wind and solar technologies as well as use of air cooling systems in the near-term to simultaneously reduce carbon and water intensity of electricity.

Our results further demonstrate that climate change mitigation can increase operational costs for water supply systems. Cost increases might be passed on to consumers based on future water pricing schemes or through taxes supporting government subsidies that often protect consumers from abrupt price changes reflecting the full cost of water infrastructure. Thus, targeted climate policies could include subsidies designed to protect vulnerable populations in water stressed regions, where there is the greatest risk

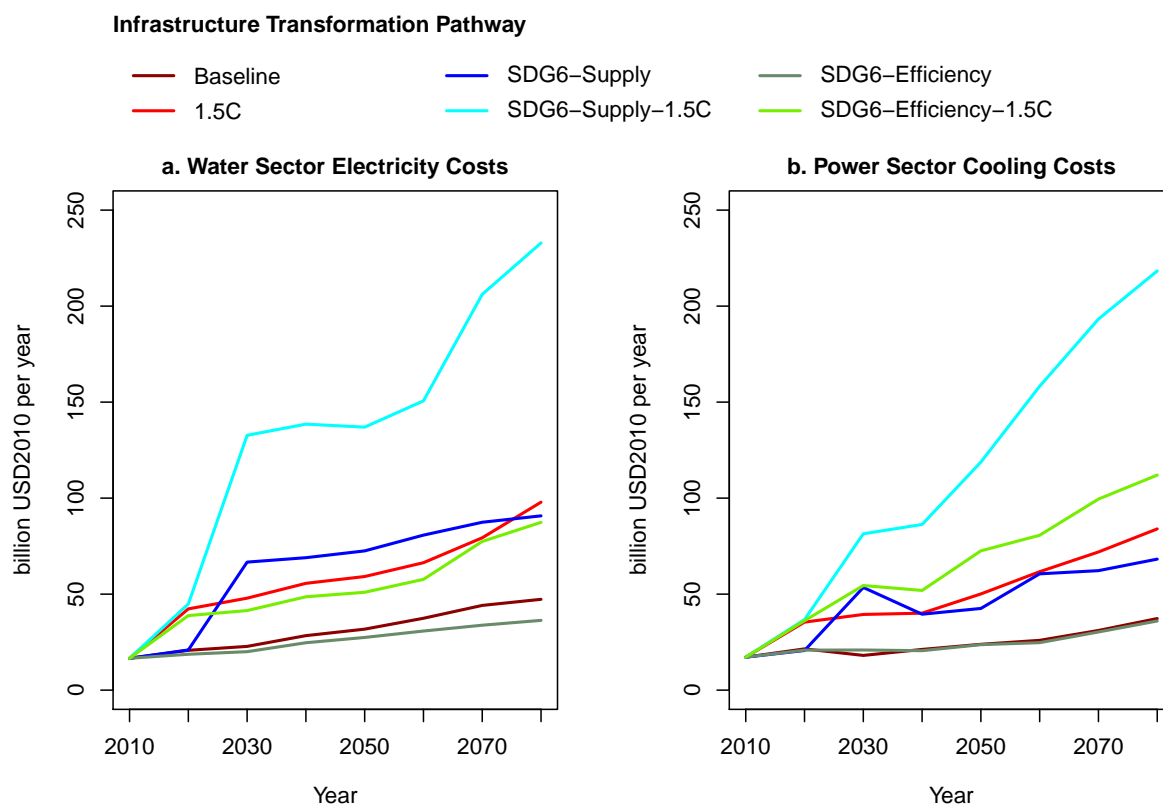


Figure 6: Global cost impacts of the combined SDG6 and 1.5 °C policies from water-energy interactions: a. water sector electricity costs; and b. power sector cooling costs.

1
2 280 for climate change mitigation to impact water-related costs due to a limited range of energy-intensive
3
4 281 freshwater supply options. Major cost uncertainties relate to the scale of future water demand growth
5
6 282 in water stressed regions and how re-allocation across sectors can address supply expansion. We find
7
8 283 that a transition to achievable water consumption intensities combined with re-allocation of water across
9
10 284 sectors (e.g., from irrigation to urban areas) can largely offset trade-offs between the investigated SDG6
11
12 285 targets and climate policy objectives.

13 286 Finding and improving synergies between decarbonization and water efficiency is therefore paramount
14
15 287 for minimizing joint policy implementation costs and uncertainties. For example, many processes within
16
17 288 the water sector are candidates for recruitment in electricity sector demand response programs or for inte-
18
19 289 gration with combined heat and power management [56, 57]. Leveraging these integrated solutions will
20
21 290 be important for increasing efficiency and the penetration of renewable generation sources. Moreover,
22
23 291 continuing innovation with emerging wastewater treatment processes could lead to significant reductions
24
25 292 in energy intensity [58]. In the near term, water and energy resource planners should promote integrated
26
27 293 valuation of efficiency measures and supply-side projects to ensure system development aligns with sus-
28
29 294 tainability goals [48].

29 295 The analysis did not consider impacts of interbasin transfers, future flood management, transboundary
30
31 296 agreements, fertilizer application or livestock waste management practices in response to water targets,
32
33 297 which would present further constraints to the development pathways. More spatial detail is also needed
34
35 298 to unravel within-basin impacts of upstream conservation on downstream water availability. Finally the
36
37 299 analysis in this paper does not cast a wide enough net to capture the expected benefits of climate change
38
39 300 mitigation in terms of the avoided impacts on water resources and consequently the performance of energy
40
41 301 technologies that rely on water availability. Significant geographic diversity is anticipated, and impacts
42
43 302 may be partially mitigated when aggregated across regions and globally [59, 60]. Nonetheless, avoiding
44
45 303 adaptation costs in the 1.5 °C scenarios is expected to improve synergies with the SDG6 targets in many
46
47 304 regions.

47 305 Despite these limitations, to our knowledge, this paper is the first to provide harmonized global path-
48
49 306 ways for water and energy infrastructure that align with elements of SDG6 and a 1.5 °C climate target.
50
51 307 Future research might address additional SDG6-climate change mitigation challenges identified above by
52
53 308 zooming into local areas to assess the multi-sector costs and benefits of policy integration [61]. In this
54
55 309 context, it is critical to incorporate clean water-climate change mitigation interactions with other SDGs,
56
57 310 particularly those with strong interdependencies, such as the SDGs involving targets for poverty, food,

1
2 311 health and biodiversity.
3
4

5 312 **Acknowledgements**

6
7
8 313 The authors acknowledge the Global Environment Facility (GEF) for funding the development of
9
10 314 this research as part of the *Integrated Solutions for Water, Energy, and Land* (ISWEL) project (GEF
11
12 315 Contract Agreement: 6993), and the support of the United Nations Industrial Development Organization
13
14 316 (UNIDO). The research has also been supported by the European Union's Horizon 2020 Research and
15
16 317 Innovation Programme under grant agreement No 642147 (CD-LINKS), the University of Victoria, and
17
18 318 the Natural Sciences and Engineering Research Council of Canada.
19

20 319 **References**

- 21
22
23 320 [1] G. Schmidt-Traub, A. Shah, Investment Needs to Achieve the Sustainable Development Goals,
24
25 321 Sustainable Development Solutions Network (2015) 1–137.
26
27 322 [2] ESMAP, Energy Sector Management Assistance Program, State of Electricity Access Report, World
28
29 323 Bank, 2017.
30
31
32 324 [3] JMP, Joint Monitoring Programme, Progress on drinking water, sanitation and hygiene: 2017 update
33
34 325 and Sustainable Development Goal baselines, World Health Organization (WHO) and the United
35
36 326 Nations Childrens Fund (UNICEF), 2017.
37
38 327 [4] E. M. Biggs, E. Bruce, B. Boruff, J. M. Duncan, J. Horsley, N. Pauli, K. McNeill, A. Neef,
39
40 328 F. Van Ogtrop, J. Curnow, et al., Sustainable development and the water–energy–food nexus: A
41
42 329 perspective on livelihoods, *Environmental Science & Policy* 54 (2015) 389–397.
43
44 330 [5] N. D. Rao, S. Pachauri, Energy access and living standards: Some observations on recent trends,
45
46 331 *Environmental Research Letters* 12 (2) (2017) 025011.
47
48
49 332 [6] O. Fricko, S. C. Parkinson, N. Johnson, M. Strubegger, M. T. van Vliet, K. Riahi, Energy sector
50
51 333 water use implications of a 2 degree C? climate policy, *Environmental Research Letters* 11 (3)
52
53 334 (2016) 034011.
54
55 335 [7] A. Plappally, J. Lienhard, Energy requirements for water production, treatment, end use, reclama-
56
57 336 tion, and disposal, *Renewable and Sustainable Energy Reviews* 16 (7) (2012) 4818–4848.
58
59
60

- 1
2 337 [8] M. Howells, S. Hermann, M. Welsch, M. Bazilian, R. Segerström, T. Alfstad, D. Gielen, H. Rogner,
3
4 338 G. Fischer, H. Van Velthuizen, et al., Integrated analysis of climate change, land-use, energy and
5
6 339 water strategies, *Nature Climate Change* 3 (7) (2013) 621–626.
7
- 8 340 [9] M. Nilsson, D. Griggs, M. Visbeck, Map the interactions between Sustainable Development Goals,
9
10 341 *Nature* 534 (7607) (2016) 320–323.
11
- 12 342 [10] C. Von Stechow, D. McCollum, K. Riahi, J. C. Minx, E. Kriegler, D. P. Van Vuuren, J. Jewell,
13
14 343 C. Robledo-Abad, E. Hertwich, M. Tavoni, et al., Integrating global climate change mitigation goals
15
16 344 with other sustainability objectives: A synthesis, *Annual Review of Environment and Resources* 40
17
18 345 (2015) 363–394.
19
- 20 346 [11] S. G. Rothausen, D. Conway, Greenhouse-gas emissions from energy use in the water sector, *Nature*
21
22 347 *Climate Change* 1 (4) (2011) 210.
23
- 24 348 [12] Y. Wada, T. Gleeson, L. Esnault, Wedge approach to water stress, *Nature Geoscience* 7 (9) (2014)
25
26 349 615–617.
27
- 28 350 [13] M. Webster, P. Donohoo, B. Palmintier, Water-CO₂ trade-offs in electricity generation planning,
29
30 351 *Nature Climate Change* 3 (12) (2013) 1029–1032.
31
- 32 352 [14] M. Bonsch, F. Humpeöder, A. Popp, B. Bodirsky, J. P. Dietrich, S. Rolinski, A. Biewald, H. Lotze-
33
34 353 Campen, I. Weindl, D. Gerten, et al., Trade-offs between land and water requirements for large-scale
35
36 354 bioenergy production, *GCB Bioenergy*.
37
- 38 355 [15] P. Brandl, S. M. Soltani, P. S. Fennell, N. Mac Dowell, Evaluation of cooling requirements of post-
39
40 356 combustion CO₂ capture applied to coal-fired power plants, *Chemical Engineering Research and*
41
42 357 *Design* 122 (2017) 1–10.
43
- 44 358 [16] D. L. McCollum, L. G. Echeverri, S. Busch, S. Pachauri, S. Parkinson, J. Rogelj, V. Krey, J. C.
45
46 359 Minx, M. Nilsson, A.-S. Stevance, et al., Connecting the Sustainable Development Goals by their
47
48 360 energy inter-linkages, *Environmental Research Letters* 13 (3) (2018) 033006.
49
- 50 361 [17] A. Dubreuil, E. Assoumou, S. Bouckaert, S. Selosse, N. Maizi, Water modeling in an energy opti-
51
52 362 mization framework–The water-scarce Middle East context, *Applied Energy* 101 (2013) 268–279.
53
54
55
56
57
58
59
60

- 1
2 363 [18] L. Gao, B. A. Bryan, Finding pathways to national-scale land-sector sustainability, *Nature*
3 544 (7649) (2017) 217–222.
4 364
- 5
6 365 [19] J. Jägermeyr, A. Pastor, H. Biemans, D. Gerten, Reconciling irrigated food production with environ-
7 366 mental flows for Sustainable Development Goals implementation, *Nature communications* 8 (2017)
8 15900.
9 367
- 10
11
12 368 [20] K. Riahi, F. Dentener, D. Gielen, A. Grubler, J. Jewell, Z. Klimont, V. Krey, D. McCollum,
13 369 S. Pachauri, S. Rao, B. van Ruijven, D. P. van Vuuren, C. Wilson, Chapter 17 - Energy Pathways
14 for Sustainable Development, in: *Global Energy Assessment - Toward a Sustainable Future*, Cam-
15 370 bridge University Press, Cambridge, UK and New York, NY, USA and the International Institute for
16 Applied Systems Analysis, Laxenburg, Austria, 2012, pp. 1203–1306.
17 371
18 URL www.globalenergyassessment.org
19 372
- 20
21 373 [21] D. P. van Vuuren, M. Kok, P. L. Lucas, A. G. Prins, R. Alkemade, M. van den Berg, L. Bouw-
22 374 man, S. van der Esch, M. Jeuken, T. Kram, et al., Pathways to achieve a set of ambitious global
23 375 sustainability objectives by 2050: Explorations using the IMAGE integrated assessment model,
24 376 *Technological Forecasting and Social Change* 98 (2015) 303–323.
25 377
- 26
27 378 [22] S. H. Kim, M. Hejazi, L. Liu, K. Calvin, L. Clarke, J. Edmonds, P. Kyle, P. Patel, M. Wise, E. Davies,
28 379 Balancing global water availability and use at basin scale in an integrated assessment model, *Cli-
29 380 matic Change* 136 (2) (2016) 217–231.
30 381
- 31
32 382 [23] G. Iyer, K. Calvin, L. Clarke, J. Edmonds, N. Hultman, C. Hartin, H. McJeon, J. Aldy, W. Pizer, Im-
33 383 plications of sustainable development considerations for comparability across nationally determined
34 384 contributions, *Nature Climate Change* 8 (2) (2018) 124.
35 385
- 36
37 386 [24] T. Kahil, S. Parkinson, Y. Satoh, P. Greve, P. Burek, T. I. Veldkamp, R. Burtscher, E. Byers, N. Dji-
38 387 lali, G. Fischer, et al., A continental-scale hydro-economic model for integrating water-energy-land
39 388 nexus solutions, *Water Resources Research*.
40 389
- 41
42 390 [25] V. Nechifor, M. Winning, Global economic and food security impacts of demand-driven water
43 391 scarcity: Alternative water management options for a thirsty world, *Water* 10 (10) (2018) 1442.
44 392
- 45
46 393 [26] O. Fricko, P. Havlik, J. Rogelj, Z. Klimont, M. Gusti, N. Johnson, P. Kolp, M. Strubegger, H. Valin,
47 394
48 395
49 396
50 397
51 398
52 399
53 400
54 401
55 402
56 403
57 404
58 405
59 406
60 407

- 1
2 390 M. Amann, et al., The marker quantification of the Shared Socioeconomic Pathway 2: A middle-of-
3
4 391 the-road scenario for the 21st century, *Global Environmental Change* 42 (2017) 251–267.
5
6
7 392 [27] B. C. O’Neill, E. Kriegler, K. L. Ebi, E. Kemp-Benedict, K. Riahi, D. S. Rothman, B. J. van Ruijven,
8
9 393 D. P. van Vuuren, J. Birkmann, K. Kok, et al., The roads ahead: Narratives for shared socioeconomic
10
11 394 pathways describing world futures in the 21st century, *Global Environmental Change* 42 (2017)
12
13 395 169–180.
14
15 396 [28] D. Huppmann, M. Gidden, O. Fricko, P. Kolp, C. Orthofer, M. Pimmer, A. Vinca, A. Mastrucci,
16
17 397 K. Riahi, V. Krey, The MESSAGEix Integrated Assessment Model and the ix modeling platform
18
19 398 (ixmp), *Environmental Modelling & Software*.
20
21 399 [29] R. Baum, J. Luh, J. Bartram, Sanitation: A global estimate of sewerage connections without treat-
22
23 400 ment and the resulting impact on MDG progress, *Environmental Science & Technology* 47 (4)
24
25 401 (2013) 1994–2000.
26
27 402 [30] R. Dellink, J. Chateau, E. Lanzi, B. Magné, Long-term economic growth projections in the Shared
28
29 403 Socioeconomic Pathways, *Global Environmental Change* 42 (2017) 200–214.
30
31 404 [31] Z. Vrontisi, G. Luderer, B. Saveyn, K. Keramidas, L. A. Reisa, L. Baumstark, C. Bertram, H. S.
32
33 405 De Boer, L. Drouet, K. Fragkiadakis, et al., Enhancing global climate policy ambition towards a
34
35 406 1.5c stabilization: a short-term multi-model assessment, *Environmental Research Letters* 13 (4)
36
37 407 (2018) 044039.
38
39
40 408 [32] GADM database of Global Administrative Areas, version 2.8 (2015).
41
42 409 [33] J. M. Hoekstra, J. Molnar, M. Jennings, C. Revenga, M. Spalding, T. Boucher, J. Robertson,
43
44 410 T. Heibel, K. Ellison, *The Atlas of Global Conservation: Changes, Challenges, and Opportuni-*
45
46 411 *ties to Make a Difference*, University of California Press (2010) 1–272.
47
48
49 412 [34] P. H. Gleick, Basic water requirements for human activities: Meeting basic needs, *Water interna-*
50
51 413 *tional* 21 (2) (1996) 83–92.
52
53 414 [35] L. Knight, *The Right to Water*, no. 3, World Health Organization, 2003.
54
55
56 415 [36] A. Shaban, R. Sharma, Water consumption patterns in domestic households in major cities, *Eco-*
57
58 416 *nomic and Political Weekly* (2007) 2190–2197.
59
60

- 1
2 417 [37] G. Hutton, J. Bartram, Regional and global costs of attaining the water supply and sanitation target
3 (Target 10) of the Millennium Development Goals, Tech. rep., World Health Organization (2008).
4 418
5
6 419 [38] G. Hutton, J. Bartram, Evaluation of the Costs and Benefits of Water and Sanitation Improvements
7 at the Global Level, World Health Organization (2004) 1–87.
8 420
9
10 421 [39] G. Hutton, M. Varughese, The costs of meeting the 2030 sustainable development goal targets on
11 drinking water, sanitation, and hygiene, Tech. rep., World Bank (2016).
12 422
13
14 423 [40] O. Kavvada, K. L. Nelson, A. Horvath, Spatial optimization for decentralized non-potable water
15 reuse, Environmental Research Letters 13 (6) (2018) 064001.
16 424
17
18 425 [41] N. Hanasaki, S. Yoshikawa, K. Kakinuma, S. Kanae, A seawater desalination scheme for global
19 hydrological models, Hydrology and Earth System Sciences 20 (10) (2016) 4143.
20 426
21
22 427 [42] U. Caldera, D. Bogdanov, C. Breyer, Local cost of seawater RO desalination based on solar PV and
23 wind energy: A global estimate, Desalination 385 (2016) 207–216.
24 428
25
26 429 [43] S. B. Grant, J.-D. Saphores, D. L. Feldman, A. J. Hamilton, T. D. Fletcher, P. L. Cook, M. Steward-
27 son, B. F. Sanders, L. A. Levin, R. F. Ambrose, et al., Taking the waste out of wastewater for human
28 water security and ecosystem sustainability, science 337 (6095) (2012) 681–686.
29 430
30 431
31
32 432 [44] E. Gonzalez-Serrano, J. Rodriguez-Mirasol, T. Cordero, A. Koussis, J. Rodriguez, Cost of reclaimed
33 municipal wastewater for applications in seasonally stressed semi-arid regions, Journal of water
34 supply: research and technology-Aqua 54 (6) (2005) 355–369.
35 433
36 434
37
38 435 [45] A. Kajenthira, A. Siddiqi, L. D. Anadon, A new case for promoting wastewater reuse in saudi
39 arabia: Bringing energy into the water equation, Journal of environmental management 102 (2012)
40 184–192.
41 436
42
43 437 [46] P. H. Gleick, G. H. Wolff, K. K. Cushing, Waste not, want not: The potential for urban water
44 conservation in California, Pacific Institute for Studies in Development, Environment, and Security
45 Oakland, CA, 2003.
46 438
47
48 439 [47] T. Dworak, M. Berglund, C. Laaser, P. Strosser, J. Roussard, B. Grandmougin, M. Kossida, I. Kyri-
49 azopoulou, S. Kolberg, P. Montesinos Barrios, et al., EU water saving potential.
50 440
51
52
53
54
55
56
57
58
59
60

- 1
2 443 [48] M. D. Bartos, M. V. Chester, The conservation nexus: Valuing interdependent water and energy
3 savings in Arizona, *Environmental Science & Technology* 48 (4) (2014) 2139–2149.
4 444
5
6 445 [49] J. Jägermeyr, D. Gerten, J. Heinke, S. Schaphoff, M. Kummu, W. Lucht, Water savings potentials
7 of irrigation systems: Global simulation of processes and linkages, *Hydrology and Earth System
8 Sciences* 19 (7) (2015) 3073.
9 446
10 447
11
12 448 [50] K. F. Davis, M. C. Rulli, A. Seveso, P. D’Oro, Increased food production and reduced water use
13 through optimized crop distribution, *Nature Geoscience* 10 (12) (2017) 919.
14 449
15
16 450 [51] P. J. Ward, K. M. Strzepek, W. P. Pauw, L. M. Brander, G. A. Hughes, J. C. Aerts, Partial costs of
17 global climate change adaptation for the supply of raw industrial and municipal water: a methodol-
18 ogy and application, *Environmental Research Letters* 5 (4) (2010) 044011.
19 451
20 452
21
22 453 [52] C. E. Raptis, S. Pfister, Global freshwater thermal emissions from steam-electric power plants with
23 once-through cooling systems, *Energy* 97 (2016) 46–57.
24 454
25
26 455 [53] V. Dorjets, Many newer power plants have cooling systems that reuse water, Tech. rep., US Energy
27 Information Administration (2014).
28 456
29
30 457 [54] Y. Qin, E. Curmi, G. M. Kopec, J. M. Allwood, K. S. Richards, China’s energy-water nexus: As-
31 sessment of the energy sector’s compliance with the 3 Red Lines industrial water policy, *Energy
32 Policy* 82 (2015) 131–143.
33 458
34 459
35
36 460 [55] D. L. McCollum, W. Zhou, C. Bertram, H.-S. de Boer, V. Bosetti, S. Busch, J. Després, L. Drouet,
37 J. Emmerling, M. Fay, et al., Energy investment needs for fulfilling the Paris Agreement and achiev-
38 ing the Sustainable Development Goals, *Nature Energy* (2018) 1.
39 461
40 462
41
42 463 [56] R. Kernan, X. Liu, S. McLoone, B. Fox, Demand side management of an urban water supply using
43 wholesale electricity price, *Applied Energy* 189 (2017) 395–402.
44 464
45
46 465 [57] A. Santhosh, A. M. Farid, K. Youcef-Toumi, Real-time economic dispatch for the supply side of the
47 energy-water nexus, *Applied Energy* 122 (2014) 42–52.
48 466
49
50 467 [58] P. L. McCarty, J. Bae, J. Kim, Domestic wastewater treatment as a net energy producer: Can this be
51 achieved?, *Environmental Science & Technology* 45 (17) (2011) 7100–7106.
52 468
53
54
55
56
57
58
59
60

- 1
2 469 [59] M. T. Van Vliet, D. Wiberg, S. Leduc, K. Riahi, Power-generation system vulnerability and adapta-
3 tion to changes in climate and water resources, *Nature Climate Change* 6 (4) (2016) 375.
4 470
5
6 471 [60] S. W. Turner, M. Hejazi, S. H. Kim, L. Clarke, J. Edmonds, Climate impacts on hydropower and
7 consequences for global electricity supply investment needs, *Energy* 141 (2017) 2081–2090.
8 472
9
10 473 [61] A. Ramaswami, K. Tong, A. Fang, R. M. Lal, A. S. Nagpure, Y. Li, H. Yu, D. Jiang, A. G. Russell,
11 L. Shi, et al., Urban cross-sector actions for carbon mitigation with local health co-benefits in China,
12 474 *Nature Climate Change*.
13
14 475
15
16
17
18
19
20
21
22
23
24
25
26
27
28
29
30
31
32
33
34
35
36
37
38
39
40
41
42
43
44
45
46
47
48
49
50
51
52
53
54
55
56
57
58
59
60