



The LandSense Engagement Platform: Connecting citizens with earth observation data for Land Use and Land Cover Monitoring

Inian Moorthy¹, Linda See¹, Matej Batič², Andreas Matheus³, Grega Milčinski², Steffen Fritz¹

¹International Institute for Applied Systems Analysis (IIASA), Laxenburg, Austria

²Sinergise, Ljubljana, Slovenia

³Secure Dimensions GmbH, Munich, Germany

Motivation

Realize the combined potential of citizen science and earth observation to improve the way we see, map and understand the world

Improve the quality of earth observation-based Land Use & Land Cover (LULC) maps/products

Demonstrate the value of satellite data to citizens while promoting environmental stewardship

Participatory Process

Overcome the conventional top-down approach used in EO-based mapping

Involve citizens and interested experts to crowdsource the required information using a more participatory approach

Engage people in various tasks (i.e. ground-based observations and on-line interactive mapping) through a citizen-powered observatory

18 Partner Institutions
9 Countries

Duration:
September, 2016 - August, 2020

Website:
www.landsense.eu

Coordinator:
Steffen Fritz - fritz@iiasa.ac.at
International Institute for Applied Systems Analysis

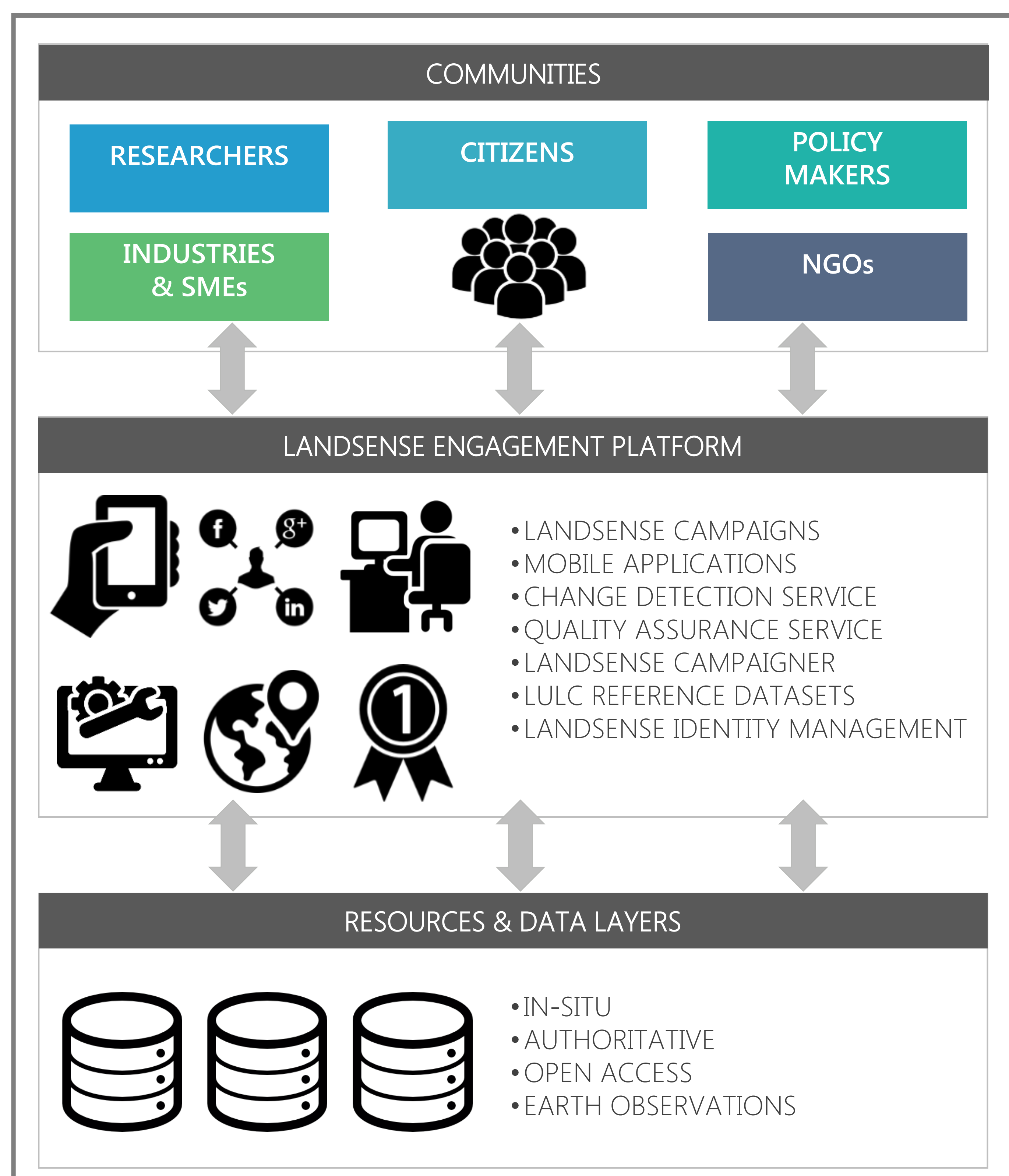
Contact:
info@landsense.eu
@LandSense

LandSense Engagement Platform

A service platform where citizens can participate in various LULC-related data collection campaigns and relevant stakeholders can register new applications to exploit existing LandSense services

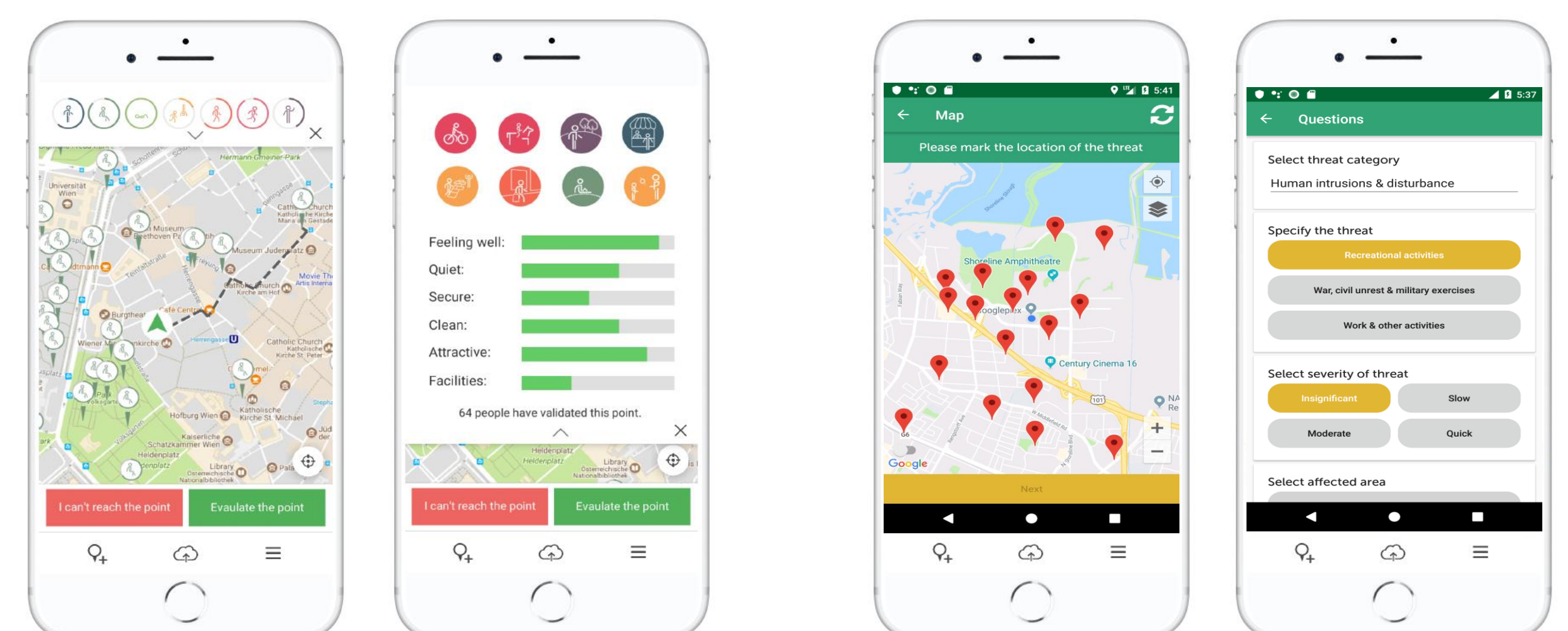
The platform employs a federated approach to support many different login providers (e.g. Google, Facebook, eduGAIN organizations) to promote the awareness, outreach, uptake and ultimately the science of citizen science

Citizens can participate in ongoing LandSense pilots (e.g. green space & biodiversity monitoring) using their own devices (e.g. mobile phones and tablets), through interactive mapping, as well as launch their own campaigns



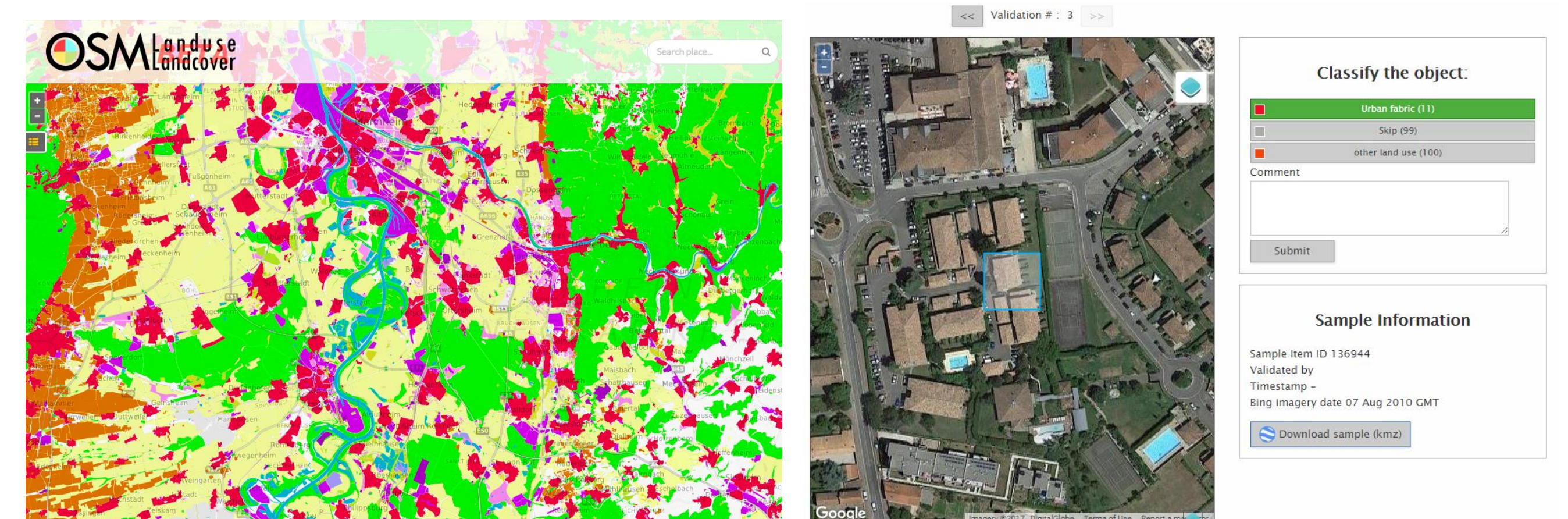
How to Get Involved?

1. Ground-based observations

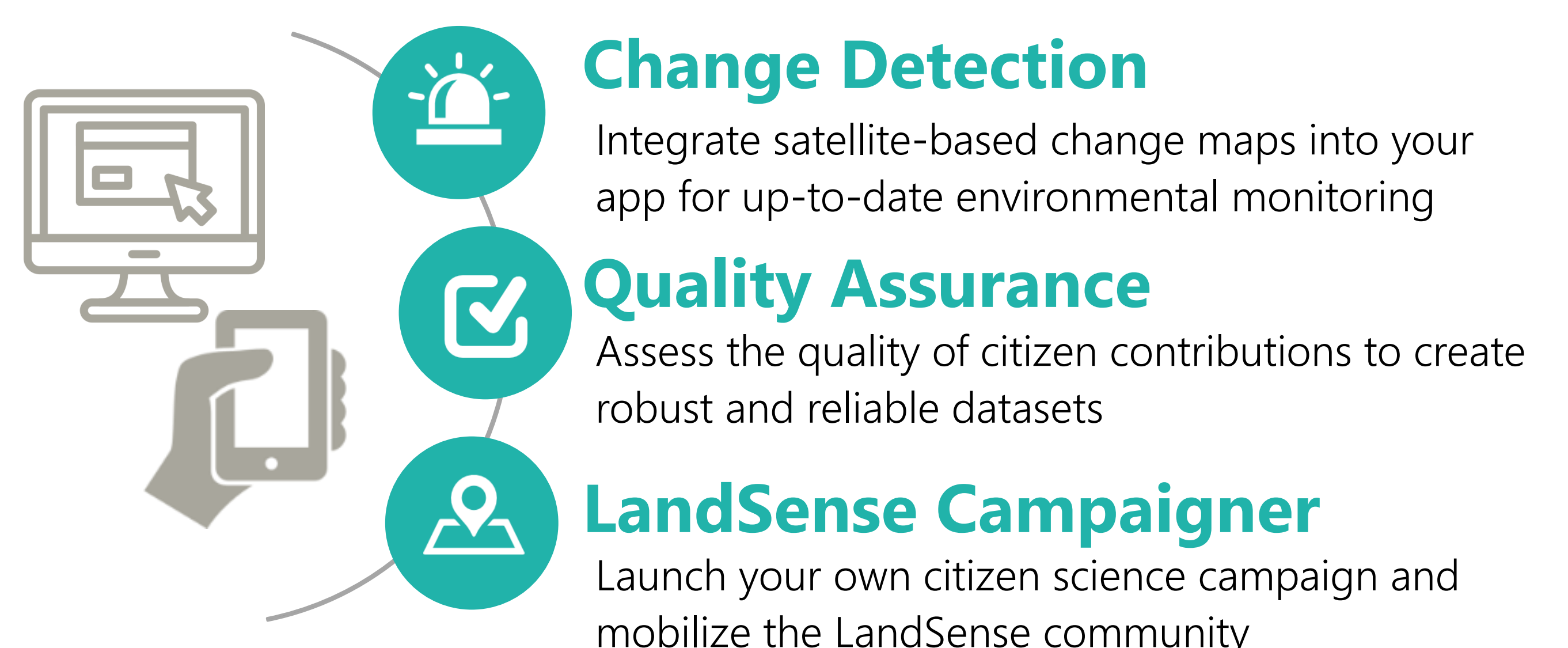


2. Online interactive mapping

Use the power of crowdsourcing to validate LULC maps via mapathons



3. Register your app and use our services



This project has received funding from the European Union's Horizon 2020 Research and Innovation Programme under grant agreement No 689812.

