

A global map

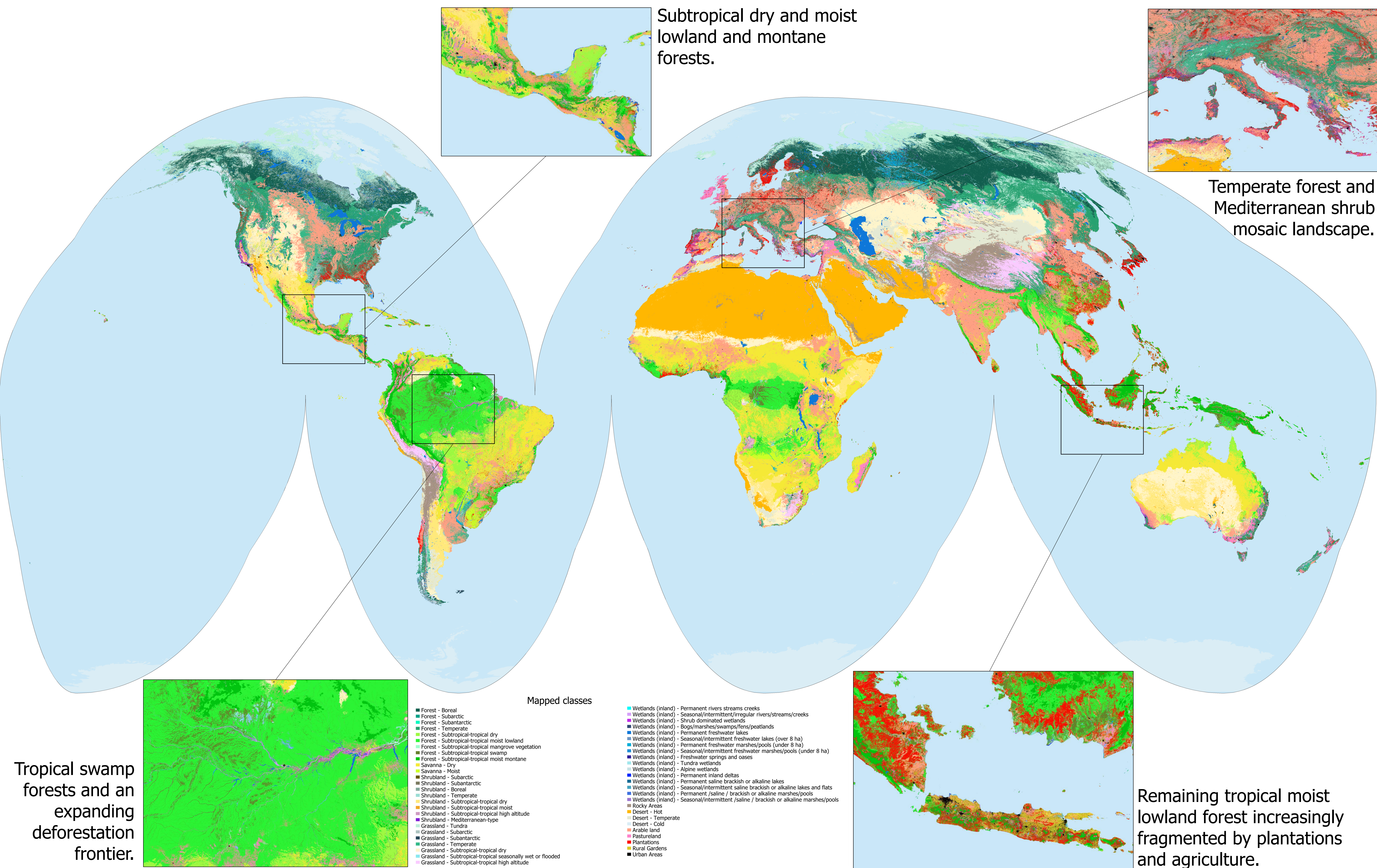


International Institute for Applied Systems Analysis
www.iiasa.ac.at

of terrestrial habitat types

Martin Jung¹, Prabhat Raj Dahal², Stuart H. M. Butchart^{3,4}, Paul F. Donald^{3,4}, Carlo Rondinini² & Piero Visconti¹

¹Ecosystems Services and Management Program (ESM), International Institute for Applied Systems Analysis (IIASA), Schlossplatz 1, A-2361 Laxenburg, Austria; ²Global Mammal Assessment Lab, Department of Biology and Biotechnologies, Sapienza University of Rome, Viale dell'Università 32, 00185 Rome, Italy; ³BirdLife International, David Attenborough Building, Pembroke Street, Cambridge CB2 3QZ, UK; ⁴Department of Zoology, University of Cambridge, Downing Street, Cambridge CB2 3EJ, UK



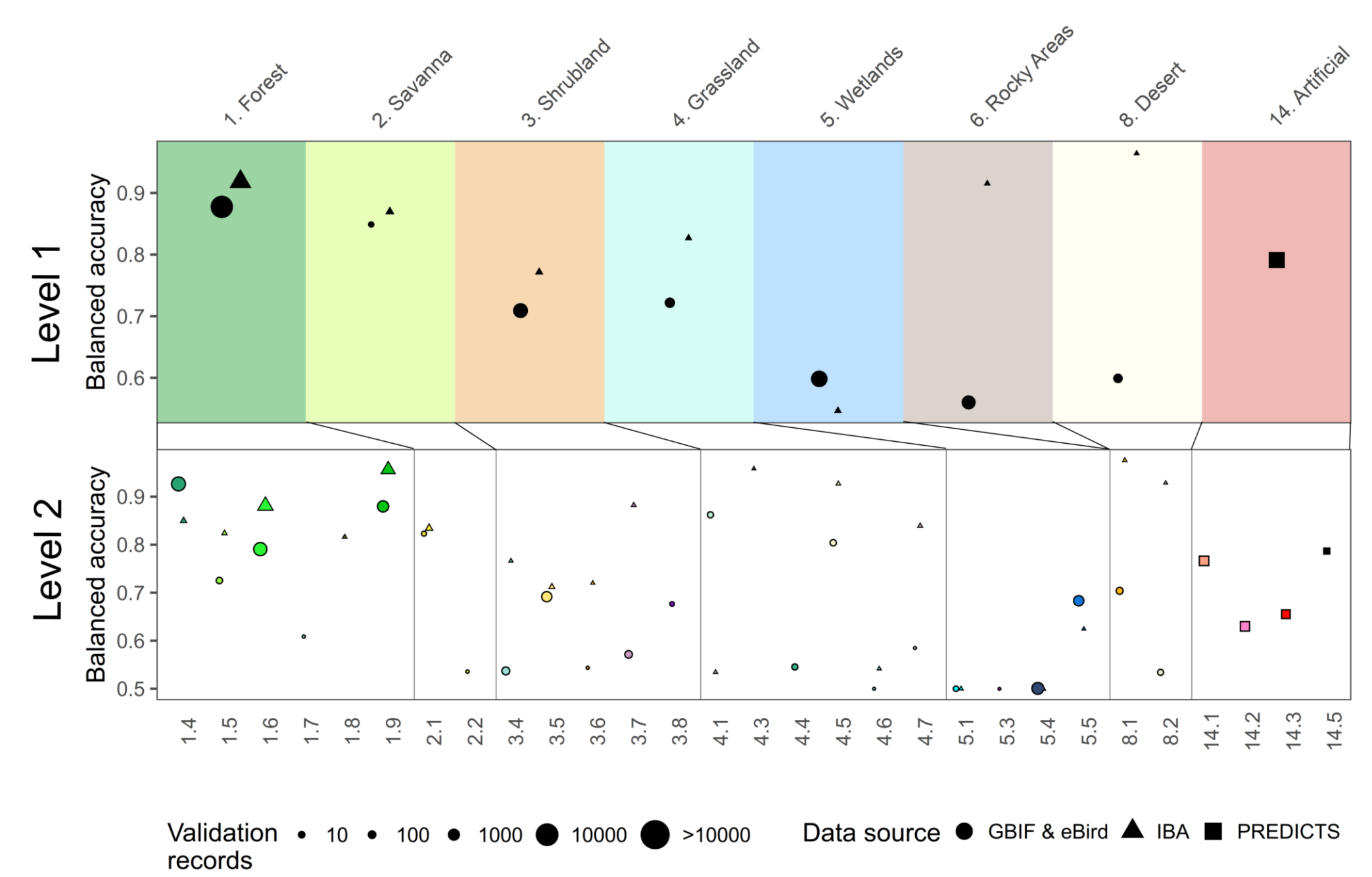
What & Why?

We provide a global characterization of terrestrial habitats, as defined in the International Union for Conservation of Nature (IUCN) habitat classification scheme. We expect this spatial map to be highly useful for IUCN Redlist assessments and refinements to species area of habitat.

How?

IUCN habitat classes at level 1 and 2 were delineated through a decision tree, intersecting best available global data on land cover, climate and land use. The map was created in Google Earth Engine (GEE). All GEE code and the map will be openly available.

Can it be validated?



View the map online and provide feedback

