

PAPER • OPEN ACCESS

Carbon dioxide mitigation co-effect analysis of clean air policies: lessons and perspectives in China's Beijing–Tianjin–Hebei region

To cite this article: Meng Xu *et al* 2021 *Environ. Res. Lett.* **16** 015006

View the [article online](#) for updates and enhancements.

ENVIRONMENTAL RESEARCH
LETTERS

LETTER

Carbon dioxide mitigation co-effect analysis of clean air policies:
lessons and perspectives in China's Beijing–Tianjin–Hebei region

OPEN ACCESS

RECEIVED

10 September 2020

REVISED

29 November 2020

ACCEPTED FOR PUBLICATION

9 December 2020

PUBLISHED

8 January 2021

Original content from
this work may be used
under the terms of the
[Creative Commons
Attribution 4.0 licence](#).

Any further distribution
of this work must
maintain attribution to
the author(s) and the title
of the work, journal
citation and DOI.

Meng Xu¹, Zhongfeng Qin¹ and Shaohui Zhang^{1,2,*} ¹ School of Economics and Management, Beihang University, Beijing 100191, People's Republic of China² International Institute for Applied Systems Analysis (IIASA), Schlossplatz 1, A-2361 Laxenburg, Austria

* Author to whom any correspondence should be addressed.

E-mail: s_zhang@buaa.edu.cn**Keywords:** Blue Sky Protection Campaign (BSPC), CO₂ mitigation, co-effects, GAINS Asia model, Beijing–Tianjin–HebeiSupplementary material for this article is available [online](#)**Abstract**

In 2018, the Beijing–Tianjin–Hebei (BTH) area launched the Blue Sky Protection Campaign (BSPC) to control atmospheric pollution. CO₂ emissions could be significantly reduced due to the co-effects of implementing the BSPC. This paper employs the Greenhouse Gas and Air Pollution Interactions and Synergies Asia model to quantitatively evaluate the CO₂ reductions when implementing the BSPC in the BTH region. The results indicate that CO₂ emissions can be reduced by 20.7 Mt (equivalently, a 19.7% reduction in the corresponding baseline scenario), 6.8 Mt (3.8%), and 80.2 Mt (9.2%) by 2020 for Beijing, Tianjin, and Hebei, respectively, as a co-benefit of the BSPC. By 2030, it is estimated that the CO₂ emission reductions will be 37.8 Mt (26.6%), 4.85 Mt (2.5%), and 69.9 Mt (8.6%) for Beijing, Tianjin, and Hebei, respectively. NO_x presents the highest co-effects with CO₂ in each region. From the key sector perspective, sectors of power and heating in Beijing, residential combustion in Tianjin, and industrial combustion in Hebei are the most important sector that presents the highest co-effects on CO₂ emission reductions due to the application of BSPC. We suggest that the implementation of BSPC, specifically the energy control measures in the power and heating, residential combustion, and industrial combustion sectors for Beijing, Tianjin, and Hebei, respectively, have high synergies and can simultaneously reduce CO₂ and other atmospheric emissions. The results contribute to city-level policymaking on facilitating air pollution control and climate change mitigation among different governmental departments.

1. Introduction

In recent decades, greenhouse gas and air pollutant emissions have been increasing rapidly in China as a result of the dramatic economic growth that relied on fossil fuels (Lei *et al* 2011, Zhao *et al* 2012). China surpassed the United States and became the world's largest carbon emitter in 2007 (Wen and Shao 2019). Substantial efforts have been made to reduce carbon emissions. Based on the 13th Five-Year Plan (FYP), China is making efforts to improve the proportion of non-fossils fuels in the total energy consumption to 15% by 2020, and decrease the share of coal consumption to below 58% by 2020 (Xu *et al* 2017). In addition, a national carbon trading scheme was launched in order to effectively cope with climate change through market-based mechanisms in

2017 (Lo 2013). The Chinese government has made ambitious commitments in terms of reducing CO₂ emissions. Specifically, the carbon intensity (measured by tons of CO₂ emissions per unit of GDP) of 2020 and 2030 is declared to decrease by 40%–45% and 60%–65%, respectively, compared with 2005 level (Xu *et al* 2017, Dong *et al* 2018). To achieve these goals, a series of measures have been taken to decrease the consumption of fossil fuels and develop cleaner energy such as hydropower, wind energy, and nuclear power (Liu *et al* 2015).

The Chinese government has also implemented some air pollutant control plans. In 2012, China's Ministry of Environmental Protection adopted the Air Quality Standards (DEP 2012), and PM_{2.5} pollution was monitored in different regions. The Chinese government released the Air Pollution Prevention

and Control Action Plan (APPCAP) in 2013, so as to reduce urban PM_{10} levels by 10% and decrease the $PM_{2.5}$ concentrations of the Beijing–Tianjin–Hebei (BTH), the Pearl River Delta (PRD), and the Yangtze River Delta (YRD) by 15%–25% from 2012 to 2017 (Ma *et al* 2020). The APPCAP was the first plan that specified the air quality goals in China (APPCAP 2013) and it may have been one of the most influential environmental policies in the past 5 years (Cai *et al* 2017). Specifically, it was calculated that with the implementation of the APPCAP, the emissions of SO_2 , NO_x , $PM_{2.5}$, and non-methane volatile organic compound (NMVOC) in 2017 had decreased by 36%, 31%, 30%, and 12%, with NH_3 emissions increased by 10% from the 2012 levels in BTH, respectively, based on the Weather Research and Forecasting model and Community Multiscale Air Quality model (Cai *et al* 2017). Also, results from Zhang *et al* (2018) indicated that the annual mean $PM_{2.5}$ concentration had decreased by more than 30% throughout the country since the implementation of the APPCAP using arithmetic mean and percentile methods. It has been concluded that under the APPCAP, industrial combustion and industry process play important roles in SO_2 reduction while it is the transportation sector dominates the NO_x reduction, and the industrial sources and domestic combustion sources contribute the most to the $PM_{2.5}$ reduction. It is worth noting that the APPCAP has reduced 352.7 Mt ($39.9 \pm 5.3\%$) of CO_2 emissions when compared to the emissions in 2012 (Lu *et al* 2019). In 2018, the Chinese government launched a 3 year plan named the Blue Sky Protection Campaign (BSPC) to reduce air pollution. The specific goals are to decrease SO_2 emissions, NO_x emissions, and $PM_{2.5}$ concentration by 15%, 15%, and 18%, respectively, compared with 2015 levels. In addition, the goal of helping reduce greenhouse gas emissions are also mentioned under the BSPC but with no controls specified. The BSPC mainly focuses on the three key regions of BTH, YRD and Fenwei Plain. Specific measures were designed to reduce emissions of atmospheric pollutants, with core contents in energy related measures, including eliminating highly polluting facilities, optimizing the energy structure, reducing the use of traditional fossil fuel in power, industrial, and residential sectors, and increasing the proportion of clean energy in total energy use. It is worth noting that these control policies would also have impacts on other air pollutants besides SO_2 , NO_x , and $PM_{2.5}$. For example, Cai *et al* (2017) presented that implementing the APPCAP had decreased the emissions of NMVOC by 12% and increased NH_3 emissions by 10% by 2017, and would decrease NMVOC emissions by 22% and increase NH_3 emissions by 3% by 2020 from the 2012 levels in the BTH region. Maji *et al* (2020) concluded that the APPCAP had led to a reduction in CO concentration by $80 \mu g m^{-3} yr^{-1}$ while the O_3 concentration was increased by $1.3 \mu g m^{-3} yr^{-1}$

from 2014 to 2018 in Beijing. In addition, many studies have shown the opposite trends of $PM_{2.5}$ and O_3 precursor emissions under the APPCAP (Fenech *et al* 2019, Zhao *et al* 2020). This is mainly because O_3 is a typical secondary pollutant and the increase in O_3 could be due to non-linear chemistry effects (e.g. NO_x Titration), as well as because of changes in $PM_{2.5}$ (Dong *et al* 2019). As the BTH region is one of China's most developed regions owing to its status in terms of economic development as well as one of the regions suffering from the most severe air pollution (Qi *et al* 2017, Hao *et al* 2018), both the APPCAP and the BSPC have identified the BTH region as a priority area for air pollution control and prioritized an investigation of the policy impacts. As policies that intended to address either air pollution or CO_2 mitigation may well impact on the other, generating co-effects or trade-offs (Rao *et al* 2016), it is important to investigate the existing indirect impacts of air pollution regulations on CO_2 mitigation and utilize the lessons learned from previous policies.

The synergistic effects between air pollution mitigation and CO_2 emission reduction has been confirmed by many studies (Mittal *et al* 2015, Peng *et al* 2017, Li *et al* 2019). Wagner and Amann (2009) applied the Greenhouse Gas and Air Pollution Interactions and Synergies (GAINS) model to assess the effectiveness of CO_2 reduction measures in the Kyoto Protocol and concluded that CO_2 reduction goals could be reached while reducing emissions of SO_2 , NO_x , and $PM_{2.5}$ by an additional 5%. Shrestha and Pradhan (2010) explored the synergies in Thailand by using a cost optimization method, which showed that by reaching the target of decreasing CO_2 emissions by 30%, SO_2 would decrease by 43%. Many studies have suggested that policies targeting sources of air pollution can also lead to CO_2 reductions benefits. For China, Lu *et al* (2019) identified that the energy-related measures under the APPCAP had reduced $47.3 \pm 0.8\%$ of SO_2 , $32.5 \pm 2.6\%$ of NO_x , $15.2 \pm 0.2\%$ of $PM_{2.5}$, and $39.9 \pm 5.3\%$ of CO_2 emissions, compared to the emissions in 2012 using the GAINS model, and suggested that $PM_{2.5}$ and NO_x had a high co-effect on reducing CO_2 emissions in the BTH region. Alimujiang and Jiang (2020) analyzed the co-effects of the electric vehicles promoting policy in Shanghai and discovered that substituting electric vehicles for conventional fuel ones could aid in both atmospheric pollutant reduction and CO_2 reduction. Yan *et al* (2013) analyzed the synergy between the reductions of atmospheric pollutant and CO_2 emissions under the Clean Development Mechanisms (CDMs), which aims to offer the opportunity for developed countries to make low-cost greenhouse gas reducing investments in developing countries. It was concluded that the coal to gas policy has a high CO_2 emission reduction co-effects. In addition, Yang *et al* (2018) concluded the measures for mitigating $PM_{2.5}$ pollution can have CO_2

reduction potentials based on a multi-objective analysis in China's iron and steel industry. Similar synergistic effects between air pollutants and CO₂ emissions have also identified by other studies under various air control policy (Dong *et al* 2019, Yu *et al* 2020).

The air pollution control measures under the BSPC aims to improve the air quality. To realize this goal, specific measures including clean energy transformation in the energy system is implemented in different sectors. It is clear that emissions of greenhouse gases, particularly CO₂, could benefit from this policy. As most studies focus on the air quality improvement after the implementation of the APPCAP, the impacts and co-effects of implementing the BSPC have not been evaluated. To the best of our knowledge, we provided the first study on the synergistic effects of the BSPC on CO₂ mitigation in the BTH region. In this research, the GAINS Asia model was applied to examine the CO₂ emission reductions, which is a co-effect of implementing the BSPC, in the BTH region of China. The results of the GAINS Asia model can provide a comprehensive CO₂ emission inventory for the year of 2015 in the BTH region, which is the most up to date one as far as we know. Future CO₂ emissions trends from different sectors after implementing the BSPC are also projected up to 2030 based on the model. We aim to answer these questions: (a) How much have CO₂ emissions reduced since the implementation of the BSPC in the BTH region? (b) Which factors contribute to the changes in CO₂ emissions? (c) What are the differences in synergies between different pollutants and the major sectors? This work will advance the scientific understanding of co-effects on CO₂ emissions when implementing air quality policy and will provide evidence of the synergies for future decision-making in air pollution control.

2. Materials and methods

2.1. Model description

The GAINS Asia model, which was developed by the International Institute of Applied Systems Analysis, is a comprehensive assessment system that evaluates the interactions and the effectiveness of different atmospheric management policies. This model takes into account activities (such as power, industry, transportation, etc) and air pollution controls for different pollutants from different source sectors at 5 year intervals (Amann *et al* 2011, Zhang *et al* 2016). We employed this model to assess the CO₂ emission reductions due to the co-effects of implementing the BSPC. Details regarding the emission calculation principle of the model are provided in section 1 of the supporting information.

2.2. Scenario settings

In this study, the base year is 2015 and the evaluated period covers 2015–2030 in 5 year intervals. Two

scenarios are proposed to study the policy effectiveness: the baseline scenario and the policy scenario. Based on the World Energy Outlook 2018 Current Policy Scenario (WEO-2018-CPS) projected by the GAINS Asia model, the baseline scenario in our study assumed that the BSPC is not implemented in the BTH region. We recalibrated the activities of energy, agricultural, and industrial processes for 2020 based on the trend from the 'WEO-2018-CPS' and the 13th FYP targets published by the BTH regional government and China's renewable report (NDRC 2016, NEA 2017a). The APPCAP is not part of our baseline scenario due to the 5 year interval evaluation and that the 2020 targets set for BSPC are in comparison with the year of 2015. Then, we made the changes in 2025 and 2030 link to the 2020 values based on the growth rate of demands between 2020 and 2030 from the 'WEO-2018-CPS'. The trends in both scenarios (2025 and 2030) are keep consistent with 'WEO-2018-CPS'.

The policy scenario assumes that the BSPC is implemented in the BTH region in order to predict the effects of this control policy from 2015 to 2020. The policy packages of the policy scenario are shown in table S1 (available online at stacks.iop.org/ERL/16/015006/mmedia) in section 2 of the supporting information. Specifically, the policy packages are divided into four categories: the power and industry sector (with core content such as improving industrial structure and the associated distribution for steel, cement, coke, glass, and coal power plants); the transport sector (with core content such as increasing the number of new energy vehicles and implementing national vi (B) standard gasoline and diesel for traffic vehicles); the building sector (with core content such as replacing untreated coal of heating by households); and the cross sector (such as the pollution controls for stationary sources). The policy packages of the BSPC and its corresponding emission control measures in the GAINS Asia model are summarized in table S2 in section 3 of the supporting information. Within the policy scenario setting step, various air pollution sources (e.g. power, industry, transportation, residential building, and agriculture) and associated activities will be considered. More specifically, parameters (e.g. energy consumption by different fuels and sectors, industrial process activities, and utilization rate of atmospheric pollution control technology) are forecasted for 2020 using the consumption trends from the yearbooks (NBS 2016, 2017, 2018, 2019). For example, a reduction in coal consumption by urban residents and commercial combustion sectors is attributed to the following factors: (a) in the urban residential heating sector, we assumed that 80% of the heat demand was derived from the district heating system (Xiong *et al* 2015); (b) hard coal grade 2 is applied instead of hard coal grade 3, and the usage of natural gas and electricity increased. These assumptions are consistent with the BSPC regulations. From 2020 to 2030, it is assumed

Table 1. Estimated emissions of major air pollutants in different scenarios.

Regions	Pollutants	Emissions						
		2015	2020		2025		2030	
			Baseline	Policy	Baseline	Policy	Baseline	Policy
Beijing	SO ₂ (kt yr ⁻¹)	146.7	127.1	64.4	116.0	59.4	104.7	57.9
	NO _x (kt yr ⁻¹)	250.3	219.0	197.0	181.8	166.0	168.3	149.5
	PM _{2.5} (kt yr ⁻¹)	110.6	96.1	45.7	86.2	39.5	76.8	39.0
Tianjin	SO ₂ (kt yr ⁻¹)	255.0	183.9	159.9	164.2	147.3	149.8	126.4
	NO _x (kt yr ⁻¹)	315.5	259.3	248.7	220.5	214.5	195.9	186.2
	PM _{2.5} (kt yr ⁻¹)	115.4	98.8	76.4	85.8	61.0	75.3	47.7
Hebei	SO ₂ (kt yr ⁻¹)	1310.8	1029.1	782.8	941.7	703.6	768.2	564.3
	NO _x (kt yr ⁻¹)	2309.4	1798.1	1585.4	1431.9	1286.3	1197.4	1033.3
	PM _{2.5} (kt yr ⁻¹)	940.6	868.2	519.0	791.7	474.9	666.4	424.7
BTH	SO ₂ (kt yr ⁻¹)	1712.5	1340.1	1007.1	1221.9	910.3	1022.7	748.6
	NO _x (kt yr ⁻¹)	2875.2	2276.4	2031.1	1834.2	1666.8	1561.6	1369.0
	PM _{2.5} (kt yr ⁻¹)	1166.6	1063.1	641.1	963.7	575.4	818.5	511.4

that the same levels of policy strictness will be maintained in the BTH region and the governments will continue to implement specific policy measures at the same rate. The detailed ways to determine the key parameters and default parameters of the GAINS Asia model used in our study are present in section 4 of the supporting information.

2.3. Quantification of CO₂ co-effects

Two indicators are introduced to evaluate the synergistic effects of CO₂ and air pollutants under the BSPC. The indicator of S_1 , which is named the ‘degree of co-effect’, represents the ratio of CO₂ reduction to one pollutant reduction (equation (1)).

$$S_1 = \frac{\Delta E_{CO_2}}{\Delta E_p}. \quad (1)$$

ΔE_{CO_2} equals the CO₂ emission reduction (Mt). ΔE_p represents the pollutant reduction (Kt).

S_1 and S_2 has been suggested in some studies to assess the synergistic level (Nathan and Kristin 2010, Liu et al 2013, Lu et al 2019). The higher S_1 is, the stronger the co-effect is. However, S_1 could be high when both ΔE_{CO_2} and ΔE_p are low in certain cases, indicating low reduction potentials. And also S_1 could be low when there are large changes in both air pollutant and CO₂ emissions. Therefore, the ‘relative degree of co-effect’ indicator S_2 has been used as the indicator for assessing the synergies in our study.

$$S_2 = \frac{\frac{\Delta E_{CO_2}}{E_{CO_2}}}{\frac{\Delta E_p}{E_p}}. \quad (2)$$

E_{CO_2} is the CO₂ emissions (Mt). E_p represents the pollutant p emissions (Kt). When we implement the BSPC, assuming the same effect of pollutant reduction level, the greater the indirect emission reduction ratio of CO₂, the higher the co-effects. This means the higher is S_2 , the greater is the CO₂ mitigation potential of decreasing one-unit pollutant.

2.4. Data sources

Data for this study was obtained from the China Guidebook for Air Pollution Emission Inventory (MEEC 2015), the Provincial Economic Yearbooks (BSB 2016, HSB 2016, TSB 2016), the China Statistical Yearbook (NBS 2016), the 13th FYP of Energy Development (NEA 2017a), the Clean Heating Plan for Winter in North China (2017–2021) (NEA 2017b), the 13th FYP of Renewable Energy Development (NDRC 2016), the 13th FYP of Industrial Transformation and Upgrading (GOHB 2016), the 13th FYP for the Comprehensive Development of Transportation Systems (GOBJ 2016, GOHB 2016, GOTJ 2016), the 13th FYP of Power Sector Development (PGC 2016), and several state-of-the-art studies (Xiong et al 2015, Zhang et al 2015, Su et al 2018).

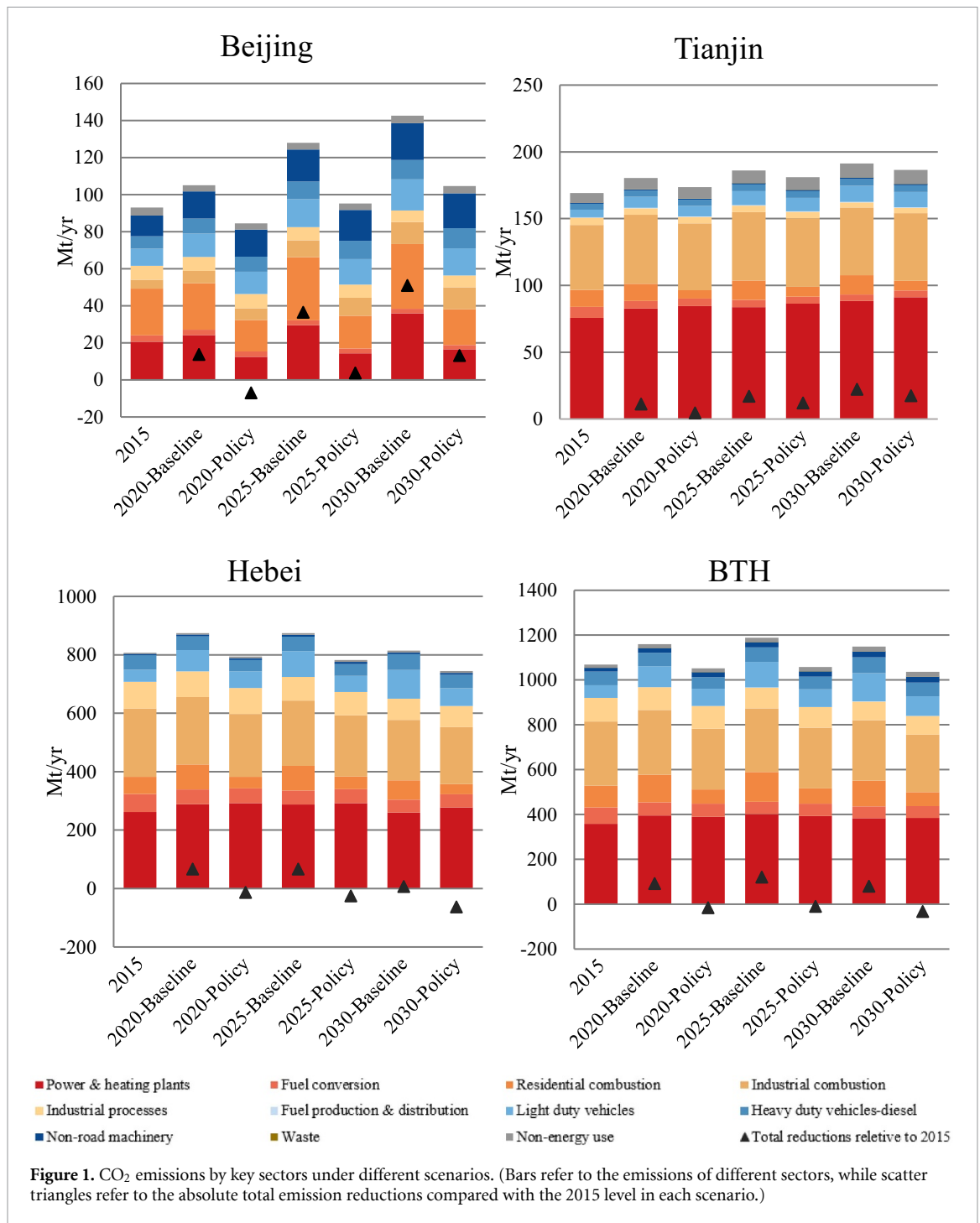
2.5. Uncertainty

All analyses conducted for this study are based on the meteorology of 2015. It is known that the interannual variability in meteorological conditions causes variations for individual years. In addition, in absence of local information from each province, the baseline projection of economic activities for each province up to 2030 has been developed from international data sources. Activity projections, especially the future development of the most polluting activities in Hebei (production levels of the various sectors in heavy industry, agricultural activities, etc) have important impacts on future emission projections and the mitigation potential. Further work that incorporates local information will be required to enhance the robustness of the findings.

3. Results and discussion

3.1. Projection for CO₂ emission by key sectors

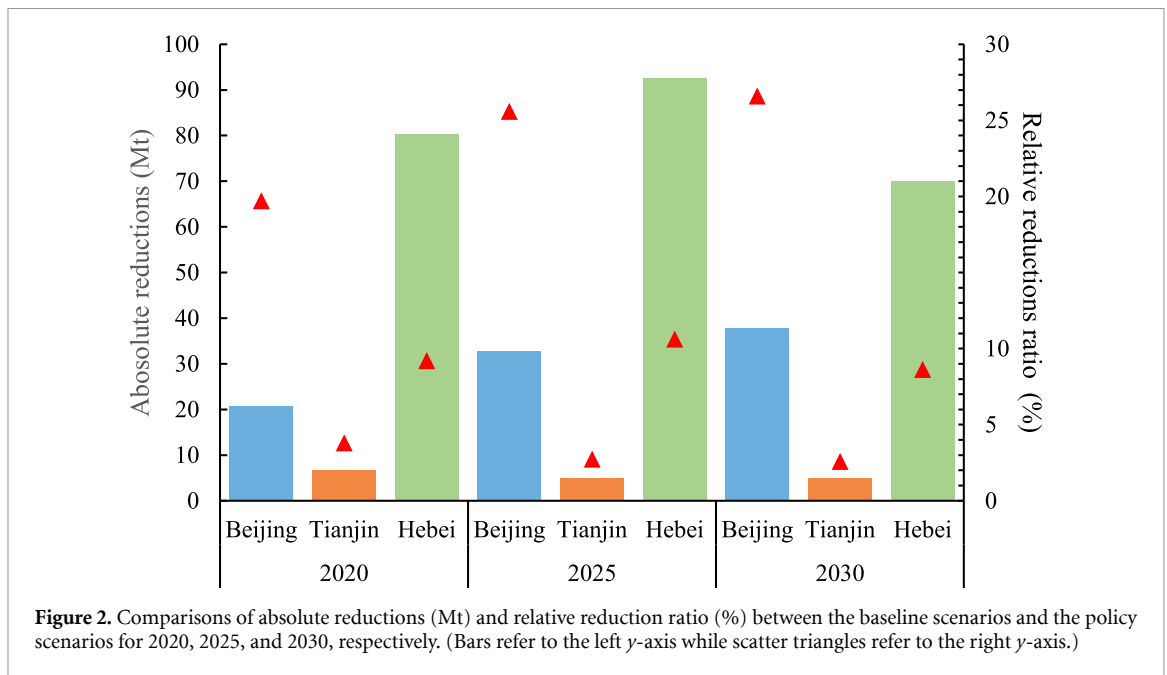
Table 1 presents the projected major pollutants (SO₂, NO_x, and PM_{2.5}) emissions under different scenarios, which have been concluded in our forthcoming published studies (Xu et al 2020). Details regarding the



emissions of these air pollutants in different sectors and scenarios of each region are shown in figures S1–S3 of the supporting information. Compared to the emissions in the 2020 baseline scenario, the BSCP would reduce emissions of SO₂ by 62.7 kt (equivalent to a 49% reduction of the emissions in the corresponding baseline scenario), 24 kt (13%), and 246.3 kt (23.9%), respectively, in Beijing, Tianjin, and Hebei by 2020. NO_x emissions reduce by 22 kt (10%) in Beijing, 11 kt (4.1%) in Tianjin, and 213 kt (12%) in Hebei by 2020. PM_{2.5} emissions reduce by 50.4 kt (52%), 22 kt (23%), and 349 kt (40%) for Beijing, Tianjin, and Hebei by 2020, respectively. In addition,

the emissions of SO₂, NO_x, and PM_{2.5} are also lower in the policy scenarios than in the baseline scenarios for 2025 and 2030. The BSCP can significantly reduce air pollutant emissions in the BTH region.

The predicted CO₂ emissions of the BTH region in the baseline and policy scenarios are presented in figure 1. In 2015, Hebei produced substantially more CO₂ than Beijing and Tianjin (about 807 Mt, 92 Mt, and 169 Mt, respectively). Figure 1 shows the primary emission tendencies in the baseline and policy scenarios. CO₂ emissions of Beijing are expected to grow significantly if the BSCP is not implemented, and it is projected to increase by 14%, 39%, and 55% relative



to 2015 by 2020, 2025 and 2030, respectively. For Tianjin and Hebei, the increases in the baseline scenarios for 2020, 2025, and 2030 are all within 11% when compared with 2015. The larger increases of relative change in CO₂ emissions in Beijing under the baseline scenarios are probably due to the large size and strong growth of the Beijing's economy driving further residential consumption (Wen and Wang 2019, Jiang *et al* 2019b, Wei *et al* 2020). If the BTH area achieves the policy targets by 2020, it is predicted that Beijing, Tianjin, and Hebei will reduce CO₂ emissions by 20.7 Mt (equivalent to a 19.7% reduction in the corresponding baseline scenario), 6.8 Mt (3.8%), and 80.2 Mt (9.2%), respectively. CO₂ emissions from the BTH area would be reduced by 107.7 Mt (9.3%), of which Hebei accounts for 74.5%. By 2030, it is expected that Beijing, Tianjin, and Hebei will reduce their emissions by 37.8 Mt (26.6%), 4.85 Mt (2.5%), and 69.9 Mt (8.6%) compared with the 2030 baseline scenario, respectively (figure 2). It is worth noting that Tianjin and Hebei presents smaller reductions by 2030 compared with 2020 and 2025. On the one hand, it is due to that the baseline scenario slightly decreases by 2030 in Hebei, generating smaller policy benefits. On the other hand, for both Tianjin and Hebei, it is mainly because by 2030, increased levels of activity will require more power plants to be built for the increasing power generation requirements, leading to a smaller reduction potential. CO₂ emissions from the BTH area in 2030 would be reduced by 112.6 Mt (9.8%), of which Hebei accounts for 62.0%. From 2020 to 2030, the absolute emission reductions and the relative emission reduction ratio of CO₂ will remain relatively stable in each of the BTH region. Specifically, Beijing: 21–35 Mt (20%–25%); Tianjin: 5–6.7 Mt (2.5% to 3.8%); Hebei: 70–92 Mt (9%–11%) (figure 2). This indicates that the indirect effects

of BSPC on CO₂ emission reductions is stable and continuous. In each scenario, the emissions of Hebei would be several times higher than those of Beijing and Tianjin. The high emissions are mainly due to the fact that most of the industrial activity occurs in Hebei, and therefore, a greater amount of fossil fuels are consumed.

In addition, it is worth noting that although significant reductions in CO₂ emissions have been projected in Beijing when compared with the corresponding baseline scenario of each year, the CO₂ emissions in the 2030 policy scenario only show a slight increase compared to those in 2015. This shows that after the implementation of the BSPC, Beijing's CO₂ emissions have remained at a relatively stable level from 2015 to 2030. Further, in the BTH region, the CO₂ emissions have also remained at a stable level since 2015, suggesting that the CO₂ emission in BTH area peaked in 2015. This is consistent with the conclusions drawn from Zhao *et al* (2018), indicating that the increasing CO₂ emission trends in the BTH region from 2000 to 2014 and Yuan (2019), which show that the CO₂ emissions presents a downward trend from 2014 to 2016 based on a 2 year interval study in the BTH region. And then the CO₂ emissions will keep relatively stable (decrease within 1% compared with 2015) in 2020 and 2025, and decrease slightly by 3% in 2030 under the BSPC compared with 2015 in the BTH region. The CO₂ emissions under the policy scenarios in each region will not change significantly from 2015 to 2030 under the BSPC, however, the APPCAP would significantly reduce 352.7 Mt (39.9 ± 5.3%) of CO₂ emissions from 2012 to 2017 (Lu *et al* 2019). This also indicates that the peak for CO₂ emissions would have come in the BTH region. Compared with the study of Tao *et al* (2019) which suggests that China's total CO₂ emissions will peak by 2030, it could be

concluded that the relatively stable CO₂ emissions in the BTH region contribute to the peak of CO₂ emissions being achieved before 2030 in China and the CO₂ emissions from the BTH region have a positive effect on controlling China's total CO₂ emissions.

The CO₂ emissions of the power and heating sector, which is a significant source of CO₂ emissions in the BTH region, accounts for 22.4%, 44.7%, and 32.5% of the total emissions in 2015 for Beijing, Tianjin, and Hebei, respectively. CO₂ emissions in the power and heating sector in Beijing would decline by 49% and 54% compared with the baseline scenario for 2020 and 2030, respectively, while the emissions in Tianjin and Hebei would undergo minimal change. In Beijing, the main reason for the reductions was the closure of the thermal power plants and coal-fired units in the power sector under the BSPC, which caused a dramatic decline in coal consumption. It is estimated that by 2025, Beijing's power demand will be 35 million kW, in which nearly 75% will depend on external sources (Liu 2020). The main source of external transmission is from Shanxi and Inner Mongolia, which are still largely powered by coal (Jiang *et al* 2019a). Therefore, it may have negative effects of indirect emissions transmission on Shanxi and Inner Mongolia based on the generation structures used in the two provinces. In Hebei and Tianjin, although some thermal power units have been renovated or shut down, the thermal power output has increased since 2017 (TSB 2019), and coal consumption in the power sector is also increasing (GCMR 2019). The increasing demand due to its own industrial structures and economic development status is consistent with the analysis report on the mid-term evaluation and future prospect of power coal control during the 13th FYP period (NCEPU 2019), which predicts that the coal consumption in China's power sector will peak in 2020 and then plateau. Current ultra-low emissions from power plants only target general air pollutants, such as SO₂, but do not target CO₂. Therefore, CO₂ emissions in the power and heating sector in Tianjin and Hebei would not decrease significantly by 2020 and 2030 compared with the baseline scenarios. In addition, the residential combustion sector in Beijing and the sector of industrial combustion in Tianjin and Hebei also play important roles in CO₂ emissions. Their emissions account for 27.5%, 28.7%, and 28.9%, respectively, of the total emissions in 2015.

As is shown in figure 1, significant CO₂ emission reductions was projected in the residential combustion sector, indicating that implementing energy replacement from coal to gas and electricity can achieve significant reductions to both CO₂ and air pollutants emissions (figures S1–S3). Specifically, the reductions in the residential combustion sector will account for 39%, 73%, and 57% of the total CO₂ emissions reductions by 2020 for Beijing, Tianjin, and Hebei, respectively. Further, by 2030, it is projected

to accounts for 44%, 88%, and 43% for each region, respectively. In addition, the reductions in the power and heating plants of Beijing will account for 57% of the total reductions by 2020. And the reductions in the Industrial combustion sector for Tianjin and Hebei will account for 20% and 19% of the total reductions by 2020, respectively. Overall, the degrees of emission reduction potential vary in different sectors and regions.

Our results demonstrate that BSPC can reduce CO₂ emissions while reducing air pollutants. For controlling air pollutants (SO₂, NO_x, and PM_{2.5}), as shown in figures S1–S3 of the supporting information, reductions mainly occur due to the energy structure optimization and transformation (e.g. control coal consumption, coal to clean policy in residential combustion and thermal power plant sector), the transportation structure optimization and transformation (e.g. increasing new energy vehicles), and the industrial structure optimization and transformation (e.g. control of production capacity in high-pollution and high-emission industries). Therefore, the optimization and transformation of these major sectors has great impacts on CO₂ emission reductions.

3.2. Clean air co-effects on CO₂ mitigation

3.2.1. Evaluation by pollutants

The metric S_2 is applied to evaluate the co-effects of CO₂ emission reductions and other atmospheric pollutants reductions (listed in table 1) under policy scenarios of different regions (figure 3). The S_2 values range from 0.38 to 2.94 in Beijing, from 0.07 to 0.99 in Tianjin, and from 0.23 to 1.20 in Hebei and BTH. The values of S_2 for BTH are close to those of Hebei because Hebei dominates the total emissions of the BTH area.

High values of S_2 indicate high synergies due to the co-effects of implementing the BSPC. Our results show that NO_x has the highest co-effects with CO₂ in Beijing, Tianjin, Hebei, and BTH in each of the policy scenarios because of the higher reduction potential of CO₂ per unit of NO_x emission reductions. This finding is consistent with the results from Feng *et al* (2018), which indicated that a co-effect for CO₂ control exists when NO_x emission control measures are implemented and identified that the energy efficiency technologies have significant co-effects on reducing NO_x and CO₂ emission levels simultaneously in China's cement industry with the Integrated MARKAL-EFOM System (TIMES) model. In our study, the values of S_2 for NO_x in Beijing are significantly higher than those of Tianjin and Hebei, which indicates a stronger co-effect on the CO₂ emission reductions due to application of NO_x control measures in Beijing. Higher S_2 value of NO_x in Beijing means higher reduction potential of CO₂ emissions while reducing per unit of NO_x emission.

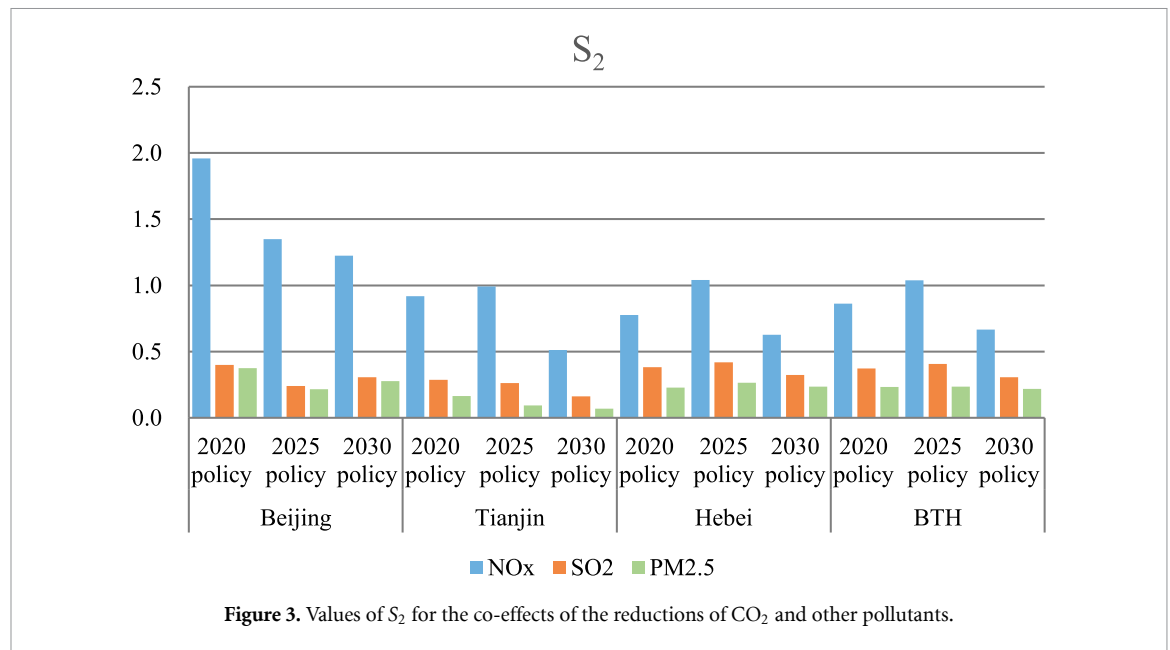


Table 2. Co-effects of the reductions of CO_2 and other pollutants emissions in main sectors with S_2 .

Regions	Key sectors	2020-Policy			2025-Policy			2030-Policy		
		NO _x	PM _{2.5}	SO ₂	NO _x	PM _{2.5}	SO ₂	NO _x	PM _{2.5}	SO ₂
Beijing	Power and heating plants	1.74	2.12	2.32	1.75	2.14	2.25	1.73	1.71	2.27
	Residential combustion	0.41	0.16	0.19	0.54	0.17	0.22	0.59	0.20	0.30
	Industrial combustion	1.09	—	1.22	0.52	—	8.45	0.12	—	1.37
	Light duty vehicles	0.82	—	—	0.99	—	—	1.09	—	—
Tianjin	Power and heating plants	-0.26	-0.21	-0.10	-0.52	-0.31	-0.41	-0.52	-0.31	-0.38
	Residential combustion	14.11	3.02	2.07	13.56	2.73	2.56	13.56	2.73	2.56
	Industrial combustion	0.71	0.09	0.42	0.06	0.00	0.03	0.06	0.00	0.03
	Light duty vehicles	0.31	—	—	0.71	—	—	0.71	—	—
Hebei	Power and heating plants	-0.29	-0.01	-0.18	-0.35	-0.02	-0.10	-4.09	-0.23	-0.69
	Residential combustion	0.75	0.38	0.57	0.67	0.29	0.46	0.66	0.29	0.37
	Industrial combustion	8.57	0.34	2.31	8.23	0.33	2.14	7.59	0.30	0.48
	Light duty vehicles	0.75	1.92	1.10	1.61	3.39	1.07	2.06	0.51	0.99
	Heavy duty vehicles-diesel	0.85	1.03	1.50	0.80	1.79	1.69	0.77	0.15	1.89

Note: Bold values represent the maximum S_2 of each key sector in the corresponding pollutant and indicates stronger synergistic effects.

3.2.2. Evaluation by key sectors

Higher S_2 values of NO_x in Beijing compared with Tianjin and Hebei are mainly attributed to Beijing’s implementation of policies that substantially decrease the coal consumption in power and heating and residential sectors. By 2020, the two sectors will account for 38.6% and 54% of Beijing’s total reduction in NO_x , and 57% and 39% of Beijing’s total CO_2 reductions, respectively. In addition, for NO_x reductions, the two sectors will totally account for 39% and 29% of total NO_x reductions by 2020 for Tianjin and Hebei, respectively. For SO_2 reductions, the two sectors will totally account for 70% and 94% of total SO_2 reductions by 2020 for Tianjin and Hebei, respectively. Table 2 presents the CO_2 co-effects evaluated by S_2 in major sectors. The values in bold represent the maximum S_2 of each key sector in the corresponding pollutant, which indicates stronger synergistic effects.

The results of S_2 show that the power and heating sector has a major synergistic role in reducing

CO_2 in Beijing, which mainly due to the closure of the thermal power plants and coal-fired units in the power sector. And whether the additional external sources of electricity that Beijing traded with Inner Mongolia and Shanxi would cause their additional increase in CO_2 emissions depends on the generation structures of the electricity in the two provinces. However, the sector of residential combustion presents the highest co-effect on reducing CO_2 in Tianjin. For Hebei, the industrial combustion sector has the major synergies. The discussion in section 3.2.1 indicates that NO_x and CO_2 have high synergistic effects and therefore as a major emitter of NO_x , the transport sector may play a role in the co-effects in the BTH region. However, the data suggest otherwise. For example, in Beijing, although the NO_x emissions from the transportation sector is substantial (figure S2), the CO_2 emission reductions from the transportation sector is minimal, which yields small values of S_2 .

It is worth noting that the co-benefits to both SO₂ and CO₂ from changes in power sector in Beijing is potential large, as indicated by the relatively large S₂ value in the power and heating sector. It indicates a higher reduction potential of CO₂ emissions while reducing per unit of SO₂ emission in the power and heating sector of Beijing, representing high synergies. However, for Tianjin and Hebei, it is the sector of residential combustion and industrial combustion that presents high co-effects, respectively. This is mainly due to the different intensity of policies implemented by each region under the BSPC, resulting in different reduction potential of air pollutants in different sectors and regions. The results show that under the BSPC, different sectors would have different reduction potentials (He *et al* 2018). Our results show agreement with the conclusions reached by Akimoto *et al* (2010), who showed that power sectors have high emission reduction potentials of CO₂, and the conclusions reached by Lu *et al* (2019), who showed that the industry and residential sectors will significantly produce large amounts of CO₂ reductions due to the implementation of the APPCAP. In addition, these studies are in agreement with the research results of China's CDM projects, which indicates that the coal-to-gas conversion policy in the industry enables high CO₂ reduction synergies (Nathan and Kristin 2010, Qie *et al* 2011).

4. Conclusion and policy implications

Our study demonstrates that BSPC can reduce CO₂ emissions while reducing air pollutants. These synergic results can further increase the overall benefits of the BSPC and reduce the costs for mitigating CO₂ in future. The BSPC can reduce CO₂ emissions by 20.7 Mt, 6.8 Mt, and 80.2 Mt by 2020 compared with the 2020 baseline scenario and reduce CO₂ emissions by 37.8 Mt, 4.85 Mt, and 69.9 Mt by 2030 compared to the 2030 baseline scenario in Beijing, Tianjin, and Hebei, respectively. In the BTH region, the relatively stable CO₂ emissions remained since 2015 after implementing the BSPC, suggesting that the CO₂ emission in the BTH region peaked in 2015. Therefore, it is reasonable to conclude that the relatively stable CO₂ emissions in the BTH region contribute to the peak of CO₂ emissions being achieved before 2030 in China and the CO₂ emissions from the BTH region have positive effects on controlling China's total CO₂ emissions.

Major sectors have great impacts on decreasing both air pollutants (SO₂, NO_x, and PM_{2.5}) and CO₂ emissions, which includes the structure optimization of energy and industry. Significant CO₂ emission reductions were observed in the residential combustion sector in each of the BTH region. Fully implementing these control policies for residential combustion were projected to reduce CO₂ emissions by 8.1 Mt, 6.4 Mt, and 46 Mt by 2020 and reduce CO₂

emissions by 15.7 Mt, 7.15 Mt, and 30.3 Mt by 2030 in Beijing, Tianjin, and Hebei, respectively. Significant CO₂ emission reductions were also presented in the power and heating sector in Beijing which is due to the closure of the thermal power plants and coal-fired units in the power sector under the BSPC.

The results of S₂ show that NO_x reduction in the BSPC has the highest co-effect with CO₂ in Beijing, Tianjin, Hebei, and BTH. The power and heating sector has a major synergistic role in reducing CO₂ in Beijing. The residential combustion presents the highest co-effects on CO₂ in Tianjin. For Hebei, the industrial combustion sector has the major synergies.

Our conclusions indicate the implementation of the BSPC, specifically the control measures in the power and heating, residential combustion, and industrial combustion sectors for Beijing, Tianjin, and Hebei, respectively, have high synergies and can simultaneously reduce CO₂ and other atmospheric emissions.

Data availability statements

All data that support the findings of this study are included within the article (and any supplementary files).

Acknowledgments

We extend our gratitude to the valuable and comprehensive comments of the anonymous reviewers. All remaining errors remain the sole responsibility of the authors. The work was supported by National Natural Science Foundation of China (71771011, 71904007, 71690245).

ORCID iD

Shaohui Zhang  <https://orcid.org/0000-0003-2487-8574>

References

- Akimoto K, Sano F, Homma T, Oda J, Nagashima M and Kii M 2010 Estimates of GHG emission reduction potential by country, sector, and cost *Energy Policy* **38** 3384–93
- Alimujiang A and Jiang P 2020 Synergy and co-benefits of reducing CO₂ and air pollutant emissions by promoting electric vehicles—a case of Shanghai *Energy Sustain. Dev.* **55** 181–9
- Amann M *et al* 2011 Cost-effective control of air quality and greenhouse gases in Europe: modeling and policy applications *Environ. Model. Softw.* **26** 1489–501
- APPCAP 2013 *Air Pollution Prevention and Control Action Plan* (The State Council of the People's Republic of China) (available at: www.gov.cn/zwqk/2013-09/12/content_2486773.htm)
- BSB 2016 *Beijing Statistics Yearbook 2016* (Beijing: Beijing Municipal Government) <http://tjj.beijing.gov.cn/>
- Cai S, Wang Y, Zhao B, Wang S, Chang X and Hao J 2017 The impact of the 'air pollution prevention and control action plan' on PM_{2.5} concentrations in Jing-Jin-Ji region during 2012–2020 *Sci. Total Environ.* **580** 197–209

- DEP 2012 *Ambient Air Quality Standards (GB3095-2012)* (Department of Environmental Protection of China) (available at: <http://www.mee.gov.cn/ywgz/fgbz/bz/bzwb/dqjhjhb/dqjhjzbz/201203/W020120410330232398521.pdf>)
- Dong F, Yu B, Hadachin T, Dai Y, Wang Y, Zhang S and Long R 2018 Drivers of carbon emission intensity change in China *Resour. Conserv. Recycl.* **129** 187–201
- Dong F, Yu B and Pan Y 2019 Examining the synergistic effect of CO₂ emissions on PM_{2.5} emissions reduction: evidence from China *J. Cleaner Prod.* **223** 759–71
- Fenech S, Doherty R M, Heaviside C, Macintyre H L, O'Connor F M, Vardoulakis S, Neal L and Agnew P 2019 Meteorological drivers and mortality associated with O₃ and PM_{2.5} air pollution episodes in the UK in 2006 *Atmos. Environ.* **213** 699–710
- Feng X-Z, Lugovoy O and Qin H 2018 Co-controlling CO₂ and NO_x emission in China's cement industry: an optimal development pathway study *Adv. Clim. Change Res.* **9** 34–42
- GCMR 2019 *Global Coal Market Report (2018–2023)* (Beijing, China: International Energy Agency) (<http://news.chinabaogao.com/nengyuan/201902/022T020142019.html>)
- GOBJ 2016 *13th Five-Year Plan for the Comprehensive Development of Transportation System in Beijing* (The People's Government of Beijing) (available at: <https://wenku.baidu.com/view/4c9d0d7351e79b89690226d0.html>)
- GOHB 2016 *13th Five-Year Plan of Industrial Transformation and Upgrading in Hebei* (The People's Government of Hebei) (available at: <http://info.hebei.gov.cn/eportal/ui?pageId=1962757&articleKey=6672412&columnId=329982>)
- GOTJ 2016 *13th Five-Year Plan for the Comprehensive Development of Transportation System in Tianjin* (The People's Government of Tianjin) (available at: <https://max.book118.com/html/2018/0316/157508421.shtml>)
- Hao Y, Peng H, Temulun T, Liu L-Q, Mao J, Lu Z-N and Chen H 2018 How harmful is air pollution to economic development? New evidence from PM_{2.5} concentrations of Chinese cities *J. Cleaner Prod.* **172** 743–57
- He K, Li X, Gao J, Pan X, Ruan L, Sun Z, Tian Y and Tong P 2018 *Investigation Report on Comprehensive Control of Bulk Coal in China of 2018* (China Coal Consumptoin Cap Plan and Policy Research. China Coal Consumptoin Cap Plan and Policy Research Project) (available at: <http://nrhc.cn/Public/uploads/2018-09-04/5b8e2ed43720b.pdf>)
- HSB 2016 *Hebei Economic Yearbook 2016* (Hebei: Hebei Statistical Bureau, China Statistics Press) (<http://tjj.hebei.gov.cn/res/nj2018/indexch.htm>)
- Jiang C, Yan Z and Song Z 2019a The scale measurement for 'coal transportturning to electricity transmission' policy of 'three west' area—Beijing–Tianjin–Hebei region *Ind. Organ. Rev.* **13** 1–24 (https://xueshu.baidu.com/usercenter/paper/show?paperid=381ab65db9859278ad0ee42405e2c039&site=xueshu_se)
- Jiang J, Ye B and Liu J 2019b Peak of CO₂ emissions in various sectors and provinces of China: recent progress and avenues for further research *Renew. Sustain. Energy Rev.* **112** 813–33
- Lei Y, Zhang Q, He K B and Streets D G J A C 2011 Primary anthropogenic aerosol emission trends for China, 1990–2005 *Atmos. Chem. Phys.* **11** 931–54
- Li N, Chen W, Rafaj P, Kiesewetter G, Schoepp W, Wang H, Zhang H, Krey V and Riahi K 2019 Air quality improvement co-benefits of low-carbon pathways toward well below the 2 °C climate target in China *Environ. Sci. Technol.* **53** 5576–84
- Liu F et al 2013 Integrating mitigation of air pollutants and greenhouse gases in Chinese cities: development of GAINS-city model for Beijing *J. Cleaner Prod.* **58** 25–33
- Liu X, Mao G, Ren J, Li R Y M, Guo J and Zhang L 2015 How might China achieve its 2020 emissions target? A scenario analysis of energy consumption and CO₂ emissions using the system dynamics model *J. Cleaner Prod.* **103** 401–10
- Liu Y 2020 Analysis on the development opportunities of the power enterprises in the 14th five year plan in Beijing-Tianjin-Hebei region *Economic Outlook Around Bohai Sea 7* (<http://qikan.cqvip.com/Qikan/Article/Detail?id=7102594720>)
- Lo A Y 2013 Carbon trading in a socialist market economy: can China make a difference? *Ecol. Econ.* **87** 72–74
- Lu Z, Huang L, Liu J, Zhou Y, Chen M and Hu J 2019 Carbon dioxide mitigation co-benefit analysis of energy-related measures in the air pollution prevention and control action plan in the Jing-Jin-Ji region of China *Resour. Conserv. Recycl.* **X** 1 100006
- Ma X, Li C, Dong X and Liao H 2020 Empirical analysis on the effectiveness of air quality control measures during mega events: evidence from Beijing, China *J. Cleaner Prod.* **271** 122536
- Maji K J, Li V O K and Lam J C K 2020 Effects of China's current air pollution prevention and control action plan on air pollution patterns, health risks and mortalities in Beijing 2014–2018 *Chemosphere* **260** 127572
- MEEC 2015 *China Guidebook for Air Pollution Emission Inventory 2015* (The Ministry of Ecology and Environment of China) (available at: www.mee.gov.cn/gkml/hbb/bgth/>201603/t20160315_332883.htm)
- Mittal S, Hanaoka T, Shukla P R and Masui T 2015 Air pollution co-benefits of low carbon policies in road transport: a sub-national assessment for India *Environ. Res. Lett.* **10** 085006
- Nathan R and Kristin A 2010 Quantifying the air quality cobenefits of the clean development mechanism in China *Environ. Sci. Technol.* **44** 4368–75
- NBS 2016 *China Statistical Yearbook 2016* (National Bureau of Statistics) (available at: www.stats.gov.cn/tjsj/ndsj/2016/indexch.htm)
- NBS 2017 *China Statistical Yearbook 2017* (National Bureau of Statistics) (available at: www.stats.gov.cn/tjsj/ndsj/2017/indexch.htm)
- NBS 2018 *China Statistical Yearbook 2018* (National Bureau of Statistics) (available at: www.stats.gov.cn/tjsj/ndsj/2018/indexch.htm)
- NBS 2019 *China Statistical Yearbook 2019* (National Bureau of Statistics) (available at: www.stats.gov.cn/tjsj/ndsj/2019/indexch.htm)
- NCEPU 2019 *Mid-Term Evaluation and Future Prospect of Power Coal Control During the 13th Five-Year Plan Period* (Beijing: North China Electric Power University) (<http://www.chinapower.com.cn/informationhyfx/20190527/1276313.html>)
- NDRC 2016 *13th Five-Year Plan of Renewable Energy Development* (National Development and Reform Commission) (available at: <http://energy.people.com.cn/n1/2016/12/19/c71661-28959415.html>)
- NEA 2017a *13th Five-Year Plan of Energy Development* (National Energy Administration) (available at: www.nea.gov.cn/2017-01/17/c_135989417.htm)
- NEA 2017b *Clean Heating Plan for Winter in North China (2017–2021)* (National Energy Administration) (available at: www.nea.gov.cn/2017-12/27/c_136854721.htm)
- Peng W, Yuan J, Zhao Y, Lin M, Zhang Q, Victor D G and Mauzerall D L 2017 Air quality and climate benefits of long-distance electricity transmission in China *Environ. Res. Lett.* **12** 064012
- PGC 2016 *13th Five-Year Plan of Industrial Transformation and Upgrading* (The People's Government of China) (available at: www.gov.cn/xinwen/2016-11/07/content_5129638.htm)
- Qi J, Zheng B, Li M, Yu F, Chen C, Liu F, Zhou X, Yuan J, Zhang Q and He K 2017 A high-resolution air pollutants emission inventory in 2013 for the Beijing-Tianjin-Hebei region, China *Atmos. Environ.* **170** 156–68
- Qie S, Bo X, Ronald W and Nils B 2011 Co-benefits of CDM projects and policy implications *Environ. Econ.* **1** 78–88 (<https://xueshu.baidu.com/usercenter/paper/show?paperid=>

- 9a39d8f6ffdb17c1e51ba46ccd41e742&site=xueshu_
se&hitarticle=1)
- Rao S et al 2016 A multi-model assessment of the co-benefits of climate mitigation for global air quality *Environ. Res. Lett.* **11** 124013
- Shrestha R M and Pradhan S 2010 Co-benefits of CO₂ emission reduction in a developing country *Energy Policy* **38** 2586–97
- Su C, Madani H and Palm B 2018 Heating solutions for residential buildings in China: current status and future outlook *Energy Convers. Manage.* **177** 493–510
- Tao Y, Wen Z, Xu L, Zhang X, Tan Q, Li H and Evans S 2019 Technology options: can Chinese power industry reach the CO₂ emission peak before 2030? *Resour. Conserv. Recycl.* **147** 85–94
- TSB 2016 *Tianjin Statistic Yearbook* (Tianjin: Tianjin Statistical Bureau) (<http://stats.tj.gov.cn/nianjian/2016nj/zk/indexch.htm>)
- TSB 2019 *Tianjin Statistic Yearbook* (Tianjin: Tianjin Statistical Bureau) (available at: <http://stats.tj.gov.cn/nianjian/2019nj/zk/indexch.htm>)
- Wagner F and Amann M 2009 *Analysis of the Proposals for GHG Reductions in 2020 Made by UNFCCC Annex I Parties: Implications of the Economic Crisis* (Laxenburg, Austria: International Institute for Applied Systems Analysis (IIASA))
- Wei X, Tong Q, Magill I, Vithayasrichareon P and Betz R 2020 Evaluation of potential co-benefits of air pollution control and climate mitigation policies for China's electricity sector *Energy Econ.* **92** 104917
- Wen L and Shao H 2019 Influencing factors of the carbon dioxide emissions in China's commercial department: a non-parametric additive regression model *Sci. Total Environ.* **668** 1–12
- Wen W and Wang Q 2019 Identification of key sectors and key provinces at the view of CO₂ reduction and economic growth in China: linkage analyses based on the MRIO model *Ecol. Indic.* **96** 1–15
- Xiong W, Wang Y, Mathiesen B V, Lund H and Zhang X 2015 Heat roadmap China: new heat strategy to reduce energy consumption towards 2030 *Energy* **81** 274–85
- Xu L, Chen N and Chen Z 2017 Will China make a difference in its carbon intensity reduction targets by 2020 and 2030? *Appl. Energy* **203** 874–82
- Xu M, Qin Z and Zhang S 2020 Integrated assessment of cleaning air policy in China: a case study for Beijing-Tianjin-Hebei region *J. Cleaner Prod.* forthcoming
- Yan W Q, Gao L J, Ren J J and Feng Y C J C E S 2013 Air pollutant reduction co-benefits of CDM in China *China Environ. Sci.* **33** 1697–704 (https://xueshu.baidu.com/usercenter/paper/show?paperid=003558af55fa1d10341da7ced195a590&site=xueshu_se)
- Yang H, Liu J, Jiang K, Meng J, Guan D, Xu Y and Tao S 2018 Multi-objective analysis of the co-mitigation of CO₂ and PM_{2.5} pollution by China's iron and steel industry *J. Cleaner Prod.* **185** 331–41
- Yu Y, Jin Z-X, Li J-Z and Jia L 2020 Low-carbon development path research on China's power industry based on synergistic emission reduction between CO₂ and air pollutants *J. Cleaner Prod.* **275** 123097
- Yuan Y 2019 *Study on the Emissions and Transfer of Greenhouse Gases in Jing-Jin-Ji Area China* (University of Geosciences) (<https://doi.org/10.27493/d.cnki.gzdzy.2019.000846>)
- Zhang -N-N, Ma F, Qin C-B and Li Y-F 2018 Spatiotemporal trends in PM_{2.5} levels from 2013 to 2017 and regional demarcations for joint prevention and control of atmospheric pollution in China *Chemosphere* **210** 1176–84
- Zhang S, Worrell E and Crijns-Graus W 2015 Mapping and modeling multiple benefits of energy efficiency and emission mitigation in China's cement industry at the provincial level *Appl. Energy* **155** 35–58
- Zhang S, Worrell E, Crijns-Graus W, Krol M, de Bruine M, Geng G, Wagner F and Cofala J 2016 Modeling energy efficiency to improve air quality and health effects of China's cement industry *Appl. Energy* **184** 574–93
- Zhao S, Yin D, Yu Y, Kang S, Qin D and Dong L 2020 PM_{2.5} and O₃ pollution during 2015–2019 over 367 Chinese cities: spatiotemporal variations, meteorological and topographical impacts *Environ. Pollut.* **264** 114694
- Zhao Y, Li H, Liu Y, Cao Y, Zhang Z and Wang S 2018 Identifying driving forces of CO₂ emissions in Beijing-Tianjin-Hebei region from temporal and spatial angles *Resour. Sci.* **40** 207–15
- Zhao Y, Zhang J, Nielsen C P J A C and Discussions P 2012 The effects of recent control policies on trends in emissions of anthropogenic atmospheric pollutants and CO₂ in China *Atmos. Chem. Phys.* **12** 24985–5036