

STABILITY ANALYSIS OF PREDATOR-PREY MODELS  
VIA THE LIAPUNOV METHOD

M. Gatto  
S. Rinaldi

October 1975

Research Memoranda are informal publications relating to ongoing or projected areas of research at IIASA. The views expressed are those of the authors, and do not necessarily reflect those of IIASA.



Stability Analysis of Predator-Prey Models  
Via the Liapunov Method\*

M. Gatto and S. Rinaldi\*\*

Abstract

As is well known from the classical applications in the electrical and mechanical sciences, energy is a suitable Liapunov function; thus, by analogy, all energy functions proposed in ecology are potential Liapunov functions. In this paper, a generalized Lotka-Volterra model is considered and the stability properties of its non-trivial equilibrium are studied by means of an energy function first proposed by Volterra in the context of conservative ecosystems. The advantage of this Liapunov function with respect to the one that can be induced through linearization is also illustrated.

1. Introduction

One of the classical problems in mathematical ecology is the stability analysis of equilibria and, in particular, the determination of the region of attraction associated with any asymptotically stable equilibrium point. It is also known that the best way of obtaining an approximation of such regions is La Salle's extension of the Liapunov method [2], [4].

Nevertheless, this approach has not been very popular among ecologists, the main reason being that Liapunov functions (i.e. functions that satisfy the conditions of the Liapunov method) are in general difficult to devise. One straightforward, but often not very effective, way of overcoming this difficulty is through linearization as shown in Section 3, while a more fruitful way consists in considering as candidates for Liapunov functions any functions that are analogous to the internal energy of the system. This is the approach that is, for example, commonly followed by engineers in the analysis of mechanical systems or in the study of nonlinear electrical networks. The reason why the Liapunov method has not been widely used in ecology possibly resides in the lack of a definition of an energy function in the context of ecological systems. One major exception is represented by the

---

\* Work partly supported by Centro di Teoria dei Sistemi, C.N.R., Milano, Italy. The paper has been presented at the 7th IFIP Conference on Optimization Techniques, Modelling and Optimization in the Service of Man, Nice, Sept. 8-13, 1975.

\*\* Centro di Teoria dei Sistemi, C.N.R., Milano, Italy.

pioneering work of Volterra and the more recent work of Kerner [1] who discussed the analogy between ecological and mechanical systems in terms of energy. Nevertheless, these works are limited to conservative ecosystems, a case that seems to be very peculiar indeed.

The aim of this paper is to show how the energy function proposed by Volterra (from now on called Volterra function) quite often turns out to be a Liapunov function even for non-conservative ecosystems. In order to avoid complexity in notation and proofs, the only case that is dealt with in the following is the one of second order (predator-prey) systems, but the authors strongly conjecture that the results presented in this paper could be easily generalized to more complex ecological models.

## 2. The Volterra Function

Consider the simple Lotka-Volterra model

$$\frac{dx}{dt} = x(a - by) \quad (1.a)$$

$$\frac{dy}{dt} = y(-c + dx) \quad (1.b)$$

where  $x$  and  $y$  are prey and predator populations and  $(a,b,c,d)$  are strictly positive constants. This system has a non-trivial equilibrium  $(\bar{x}, \bar{y})$  given by  $(\bar{x}, \bar{y}) = (c/d, a/b)$  which is simply stable in the sense of Liapunov. Moreover, any initial state in the positive quadrant gives rise to a periodic motion. This can easily be proved by means of the energy function proposed by Volterra,

$$V = (x/\bar{x} - \log x/\bar{x}) + p(y/\bar{y} - \log y/\bar{y}) - (1 + p), \quad (2)$$

where

$$p = b\bar{y}/d\bar{x},$$

since this function is constant along any trajectory and its contour lines are closed lines in the positive quadrant. In other words, the Volterra function (2) is a Liapunov function because it is positive definite and its derivative  $dV/dt$  is negative semidefinite (identically zero).

In the following, the Volterra function will be used in relation with non-conservative ecosystems of the form:

$$\begin{aligned} \frac{dx}{dt} &= x(a - by + f(x,y)) \\ \frac{dy}{dt} &= y(-c + dx + g(x,y)), \end{aligned} \tag{3}$$

where  $f$  and  $g$  are continuously differentiable functions. Moreover, we assume that there exists a non-trivial equilibrium  $(\bar{x}, \bar{y}) > 0$  and that the positive quadrant is an invariant set for system (3) so that it can be identified from now on with the state set of the system.

### 3. Linearization and the Liapunov Equation

Liapunov functions can, of course, be constructed by solving the so-called Liapunov equation. This procedure is now briefly described so that the advantage of the Volterra function can be better appreciated in the next sections. Let

$$\delta x = x - \bar{x}$$

$$\delta y = y - \bar{y}$$

be the variations of prey and predator populations with respect to the equilibrium  $(\bar{x}, \bar{y})$ . Then the linearized system associated with this equilibrium is given by

$$\frac{d}{dt} \begin{bmatrix} \delta x \\ \delta y \end{bmatrix} = F \begin{bmatrix} \delta x \\ \delta y \end{bmatrix} = \begin{bmatrix} \bar{f}_x \bar{x} & (-b + \bar{f}_y) \bar{x} \\ (d + \bar{g}_x) \bar{y} & \bar{g}_y \bar{y} \end{bmatrix} \begin{bmatrix} \delta x \\ \delta y \end{bmatrix}, \tag{4}$$

where  $(\bar{f}_x, \bar{f}_y, \bar{g}_x, \bar{g}_y)$  are the partial derivatives of  $f$  and  $g$  evaluated for  $(x,y) = (\bar{x}, \bar{y})$ . Now, assume that the matrix  $F$  has eigenvalues with negative real parts, which implies that the equilibrium is asymptotically stable (recall that the converse is not true). Under this assumption Liapunov's equation (matrix equation)

$$F^T P + P F = -Q \tag{5}$$

has one and only one solution in the unknown matrix P for any positive definite matrix Q. Moreover, the matrix P is positive definite and the function

$$W = \begin{vmatrix} \delta x & \delta y \end{vmatrix} P \begin{vmatrix} \delta x & \delta y \end{vmatrix}^T \quad (6)$$

is a Liapunov function because its derivative

$$\frac{dW}{dt} = - \begin{vmatrix} \delta x & \delta y \end{vmatrix} Q \begin{vmatrix} \delta x & \delta y \end{vmatrix}^T$$

is negative definite. In conclusion, the Liapunov function (6) can be very easily determined by solving equation (5) with F given as in equation (4) and with Q positive definite (e.g. Q = identity matrix). The only limitation to the applicability of this method is the assumption on the eigenvalues of the matrix F: for example, the Lotka-Volterra model (1) cannot be discussed in this way, since the F matrix has purely imaginary eigenvalues. Nevertheless, even when this method can be applied, the results are not in general as satisfactory as the ones that can be obtained by means of the Volterra function as shown in the next section.

#### 4. The Volterra Function as a Liapunov Function

Consider the generalized Lotka-Volterra model (3) and the Volterra function V given by equation (2). Then, the derivative of the Volterra function along trajectories is given by

$$\begin{aligned} \frac{dV}{dt} &= \frac{\partial V}{\partial x} \frac{dx}{dt} + \frac{\partial V}{\partial y} \frac{dy}{dt} = \left( \frac{x}{\bar{x}} - 1 \right) \left( a - by + f(x,y) \right) \\ &+ \frac{b\bar{y}}{d\bar{x}} \left( \frac{y}{\bar{y}} - 1 \right) \left( -c + dx + g(x,y) \right) . \end{aligned}$$

In order to study  $dV/dt$  in a neighborhood of the equilibrium  $(\bar{x}, \bar{y})$ , it is possible to expand this function in Taylor series up to the second order terms, i.e.

$$\begin{aligned}
 \frac{dV}{dt} &\approx \left. \frac{dV}{dt} \right|_{\bar{x}, \bar{y}} + \left. \frac{d}{dx} \left( \frac{dV}{dt} \right) \right|_{\bar{x}, \bar{y}} \delta x + \left. \frac{d}{dy} \left( \frac{dV}{dt} \right) \right|_{\bar{x}, \bar{y}} \delta y \\
 &+ \frac{1}{2} \left. \frac{d^2}{dx^2} \left( \frac{dV}{dt} \right) \right|_{\bar{x}, \bar{y}} (\delta x)^2 + \frac{1}{2} \left. \frac{d^2}{dy^2} \left( \frac{dV}{dt} \right) \right|_{\bar{x}, \bar{y}} (\delta y)^2 \\
 &+ \left. \frac{d^2}{dxdy} \left( \frac{dV}{dt} \right) \right|_{\bar{x}, \bar{y}} \delta x \delta y \quad . \quad (7)
 \end{aligned}$$

Since

$$\left. \frac{dV}{dt} \right|_{\bar{x}, \bar{y}} = \left. \frac{d}{dx} \left( \frac{dV}{dt} \right) \right|_{\bar{x}, \bar{y}} = \left. \frac{d}{dy} \left( \frac{dV}{dt} \right) \right|_{\bar{x}, \bar{y}} = 0$$

$$\left. \frac{d^2}{dx^2} \left( \frac{dV}{dt} \right) \right|_{\bar{x}, \bar{y}} = \frac{2\bar{f}_x}{\bar{x}}$$

$$\left. \frac{d^2}{dy^2} \left( \frac{dV}{dt} \right) \right|_{\bar{x}, \bar{y}} = \frac{2b\bar{g}_y}{d\bar{x}}$$

$$\left. \frac{d^2}{dxdy} \left( \frac{dV}{dt} \right) \right|_{\bar{x}, \bar{y}} = \frac{\bar{f}_y}{\bar{x}} + \frac{b\bar{g}_x}{d\bar{x}} \quad ,$$

eq. (7) becomes

$$\frac{dV}{dt} \approx \frac{1}{2} [\delta x \quad \delta y] \begin{bmatrix} \frac{2\bar{f}_x}{\bar{x}} & \frac{\bar{f}_y}{2\bar{x}} + \frac{b\bar{g}_x}{2d\bar{x}} \\ \frac{\bar{f}_y}{2\bar{x}} + \frac{b\bar{g}_x}{ad\bar{x}} & \frac{2b\bar{g}_y}{d\bar{x}} \end{bmatrix} [\delta x \quad \delta y]^T \quad . \quad (8)$$

Therefore the second order approximation of  $dV/dt$  turns out to be a homogeneous quadratic form; by studying the negative or positive definiteness of such a form, it is possible to derive sufficient conditions for the Volterra function to be a Liapunov function. More precisely, by applying the well-known Sylvester conditions and performing easy computations, we obtain

$$\left. \begin{array}{l} \bar{f}_x < 0 \\ (b\bar{g}_x + d\bar{f}_y) < 4bd\bar{f}_x\bar{g}_y \end{array} \right\} \frac{dV}{dt} \text{ negative definite} \quad (9)$$

$$\left. \begin{array}{l} \bar{f}_x > 0 \\ (b\bar{g}_x + d\bar{f}_y)^2 > 4bd\bar{f}_x\bar{g}_y \end{array} \right\} \frac{dV}{dt} \text{ positive definite} \quad (10)$$

Notice that these conditions are only sufficient for Liapunov methods to be applicable; thus, even if these conditions are not satisfied, it is possible that the Volterra function turns out to be a Liapunov function (see Example 2).

As far as the study of stability properties in the large is concerned, the Volterra function is definitely advantageous with respect to the quadratic forms derived by means of Liapunov's equation (5). This is apparent in the case of global stability; in fact, global stability can be inferred by means of Volterra function, whose contour lines in the state set are closed, while this is never possible by means of a positive definite quadratic form of the kind (6), since the contour lines are not closed (see Examples 1 and 2).

## 5. Examples

This section is devoted to clarifying by means of some examples what has been discussed above, with particular emphasis on the trade-offs between the Volterra function and the quadratic Liapunov function that can be obtained by solving the Liapunov equation.

### Example 1

The first example is a simple symmetric competition model for two species described by the following equations (see May [3]):



$$\frac{dx}{dt} = x(k_1 - x - \alpha y)$$

$$\frac{dy}{dt} = y(k_2 - y - \alpha x),$$

where  $k_1, k_2$  and  $\alpha$  are positive parameters.

Provided that

$$\begin{cases} \alpha k_2 > k_1 \\ \alpha k_1 > k_2 \end{cases} \quad \begin{cases} \alpha k_2 < k_1 \\ \alpha k_1 < k_2 \end{cases}$$

a non-trivial equilibrium  $(\bar{x}, \bar{y})$  exists and is given by

$$(\bar{x}, \bar{y}) = \left( \frac{\alpha k_2 - k_1}{\alpha^2 - 1}, \frac{\alpha k_1 - k_2}{\alpha^2 - 1} \right).$$

Thus, the matrix  $F$  of the linearized system is given by

$$F = \begin{bmatrix} -\bar{x} & -\alpha \bar{x} \\ -\alpha \bar{y} & -\bar{y} \end{bmatrix}$$

and its eigenvalues have negative real parts, provided that its trace is strictly negative and its determinant is strictly positive. These conditions are obviously satisfied if  $\alpha < 1$ . On the other hand, also the sufficient conditions given by eq. (9) work well. In fact

$$\bar{f}_x = -1 < 0$$

and

$$(b\bar{g}_x + d\bar{f}_y)^2 = \alpha^2(1 + \alpha)^2 < 4bd\bar{f}_x\bar{g}_x = 4\alpha$$

provided that  $\alpha < 1$ .

However, the Volterra function guarantees the global stability of the equilibrium. This can be easily understood when taking into account that there is no error in the Taylor expansion (7), because the functions  $f$  and  $g$  are linear. Thus,  $dV/dt$  is negative definite in the state set and global stability follows from La Salle's conditions.

Example 2

Consider the well-known modification obtained from the classical Lotka-Volterra model, when assuming, in the absence of predation, a logistic growth for the prey:

$$\frac{dx}{dt} = x(a - by - kx)$$

$$k > 0 .$$

$$\frac{dy}{dt} = y(-c + dx)$$

If  $ad > kc$  a non-trivial equilibrium

$$(\bar{x}, \bar{y}) = \left( \frac{c}{d}, \frac{a}{b} - \frac{kc}{bd} \right)$$

exists, and linearization around it yields

$$F = \begin{bmatrix} \frac{-kc}{d} & \frac{-bc}{d} \\ \frac{da - kc}{b} & 0 \end{bmatrix} ,$$

which has eigenvalues with negative real parts. On the other hand, it turns out that

$$\bar{f}_x = -k$$

$$4bd\bar{f}_x\bar{g}_y = (b\bar{g}_x + d\bar{f}_y)^2 = 0 .$$

Therefore eq. (9) is not satisfied. Nevertheless, a direct computation yields

$$\frac{dV}{dt} = - \frac{k}{b\bar{x}\bar{y}} (x-\bar{x})^2,$$

i.e.  $dV/dt$  is negative semidefinite. Since the locus  $dV/dt = 0$  is not a trajectory of the system (easy to check), Krasowskyi conditions are met with and asymptotic stability can be inferred. Moreover, since  $dV/dt$  is negative semidefinite in the whole state set, global stability can be straightforwardly deduced.

### Example 3

A third example is given to show how a subregion of the region of asymptotic stability can be found by means of the Volterra function.

Consider a situation where the prey, in the absence of predators, has an asymptotic carrying capacity  $\beta$  and a minimum density  $\alpha$ , below which successful mating cannot overcome the death processes. This model can be described by

$$\frac{dx}{dt} = x(-(x - \alpha)(x - \beta) - \gamma y)$$

$$\frac{dy}{dt} = y(-c + x)$$

where  $\alpha, \beta, \gamma$  are positive parameters which are supposed to satisfy the relations

$$a < c < \beta$$

$$\frac{\alpha + \beta}{2} < c .$$

It is easy to check that there exists only one non-trivial equilibrium given by  $(\bar{x}, \bar{y}) = \left( c, - \frac{(c - \alpha)(c - \beta)}{\gamma} \right)$ .

This equilibrium is not globally stable, since the origin of the state space is also asymptotically stable. The regions A and B of asymptotic stability obtained by simulation for particular values of the parameters are shown in Figure 1. It is possible to determine an approximation of region A by means of the Volterra function. In fact,

$$\begin{aligned}\frac{dV}{dt} &= \left(\frac{x}{\bar{x}} - 1\right) \left(- (x - \alpha)(x - \beta) - \gamma y\right) + \gamma \frac{\bar{y}}{x} \left(\frac{y}{\bar{y}} - 1\right) (-c + x) \\ &= \frac{1}{\bar{x}} (x - \bar{x})^2 (\alpha + \beta - c - x)\end{aligned}$$

is negative semidefinite in the region

$$x > \alpha + \beta - c$$

$$y > 0$$

since  $(\alpha + \beta)/2 < c$ . Moreover the straight line  $x = \bar{x}$ , where  $dV/dt = 0$ , does not contain any perturbed trajectory. Therefore the region bounded by the contour line of the Volterra function that is tangent to the straight line  $x = \alpha + \beta - c$  (see Figure 1) represents an estimate of the region of attraction, since La Salle's conditions are satisfied.

## 6. Concluding Remarks

The energy function proposed by Volterra has been used in this paper to analyze the asymptotic behavior of non-conservative ecosystems of the predator-prey type. The main result is that the Volterra function turns out to be a well-defined Liapunov function for a large class of systems and therefore allows the discussion of the local and global stability properties of such systems. The Volterra function definitely seems advantageous with respect to the Liapunov functions that can be obtained through linearization, particularly in the case of global stability. Moreover, it is worthwhile noting that the Volterra function is also of interest when the equilibrium state under discussion is unstable. The results obtained in this paper allow us to prove in a very simple form some general properties such as the following: if the function  $f$  and  $g$  in the general model (3)

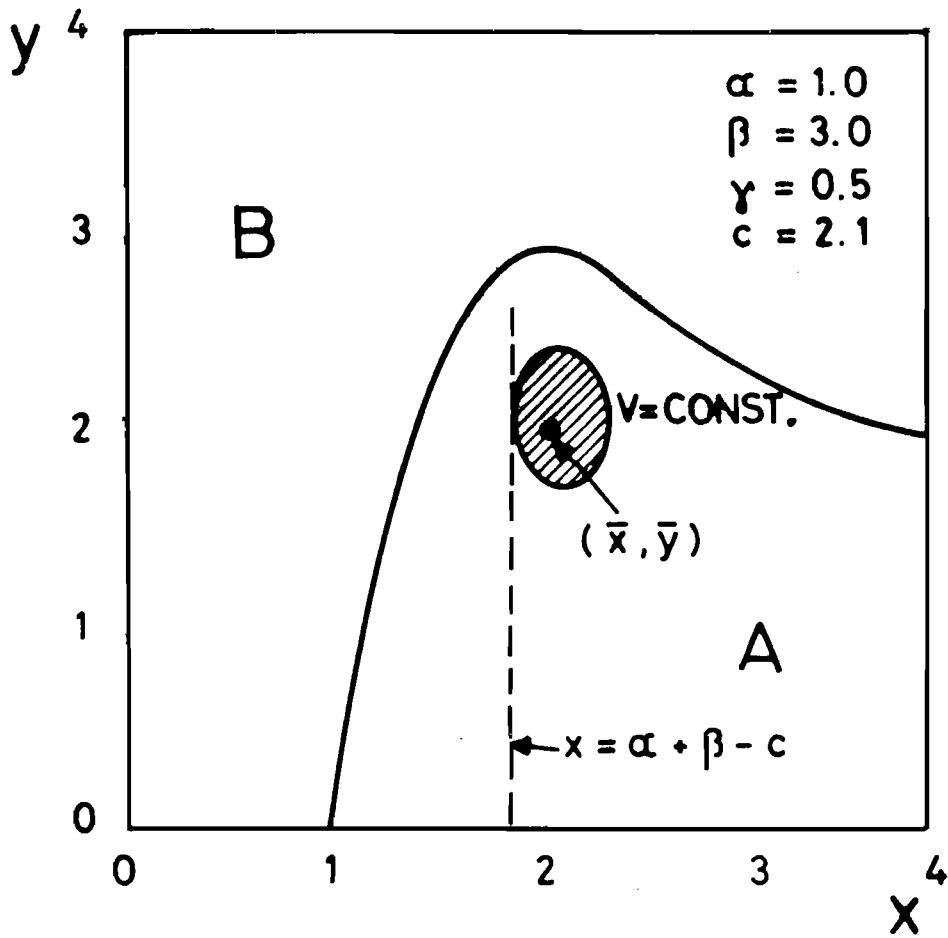


Figure 1. The estimation of the region A of attraction by means of the Volterra function.

are linear and satisfy eq. (9), then the local stability of an equilibrium implies its global stability.

Acknowledgement

The authors are grateful to Dr. Dixon D. Jones for his helpful suggestions and advice.

References

- [1] Kerner, E.H. "A Statistical Mechanics of Interacting Biological Species." Bull. Math. Biophys., 19 (1957), 121-146.
- [2] La Salle, J.P. "Some Extensions of Liapunov's Second Method." IRE Trans. on Circuit Theory, 7 (1960), 520-527.
- [3] May, R.M. Stability and Complexity in Model Ecosystems. Princeton, New Jersey, Princeton University Press, 1973.
- [4] Rosen, R. Dynamical System Theory in Biology, Vol. 1, Wiley-Interscience, 1970.